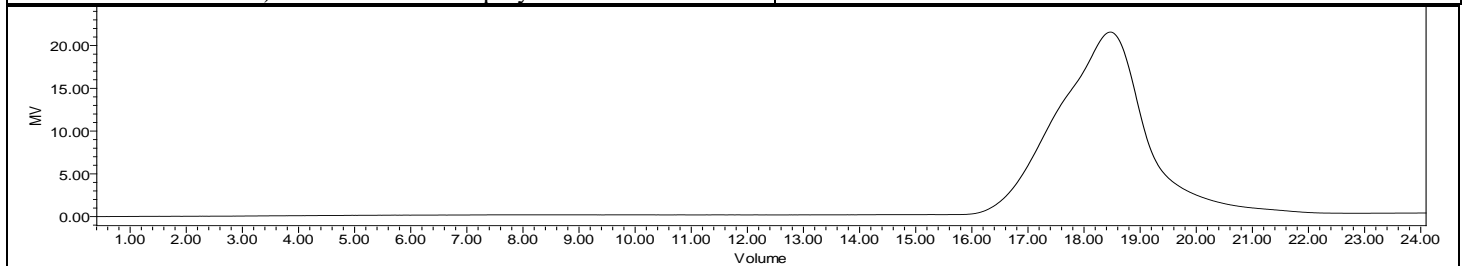
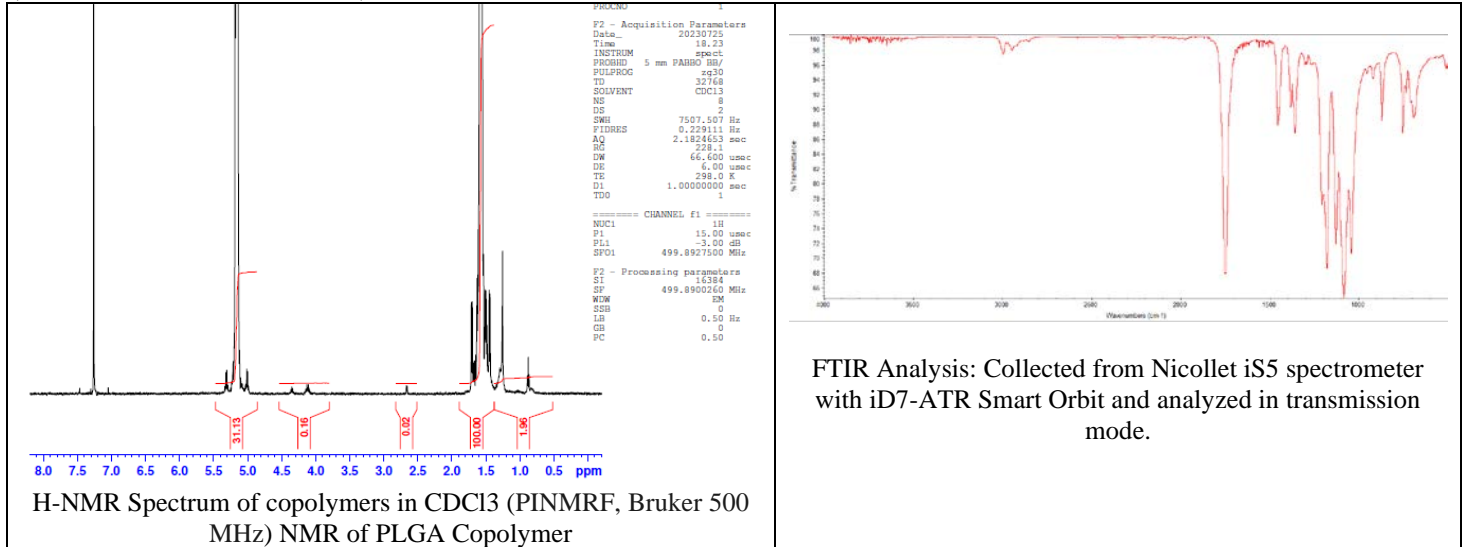


No. CB010

Certificate of Analysis



Product Name: Poly(L-Lactide) I.V. 0.9 - 1.2 dL/g, acid endcap (PL 10)
(Lot # 211218CPB-228)



GPC-ES Analysis Method: Waters Breeze 2 system with 1 ml/min THF flow across three GPC columns. Detection via refractive index, calibrated against polystyrene standards.

Polymer	M _n (from GPC)	M _w (from GPC)	PDI
PLGA	77,429	94,407	1.22

Manufacturer Provided Data



Assay	Specification	Result
Tin content	<50ppm	13 ppm
Water content	<0.50%	03%
Residual monomer, DL Lactide	<2.4%	1.9%
Inherent Viscosity ²	0.16-0.24 dL/g	0.22 dL/g
Endotoxin	<6 EU/g	0.25 EU/g
Residual solvent	<0.10%	0.01 ppm

1 – Measured by titration

2 – Measured at 25 °C in Chloroform c=1 g/dL

Approved By:
Amie Tyler
Quality Manager