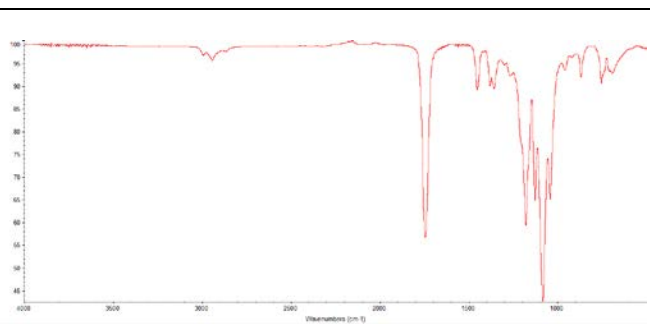
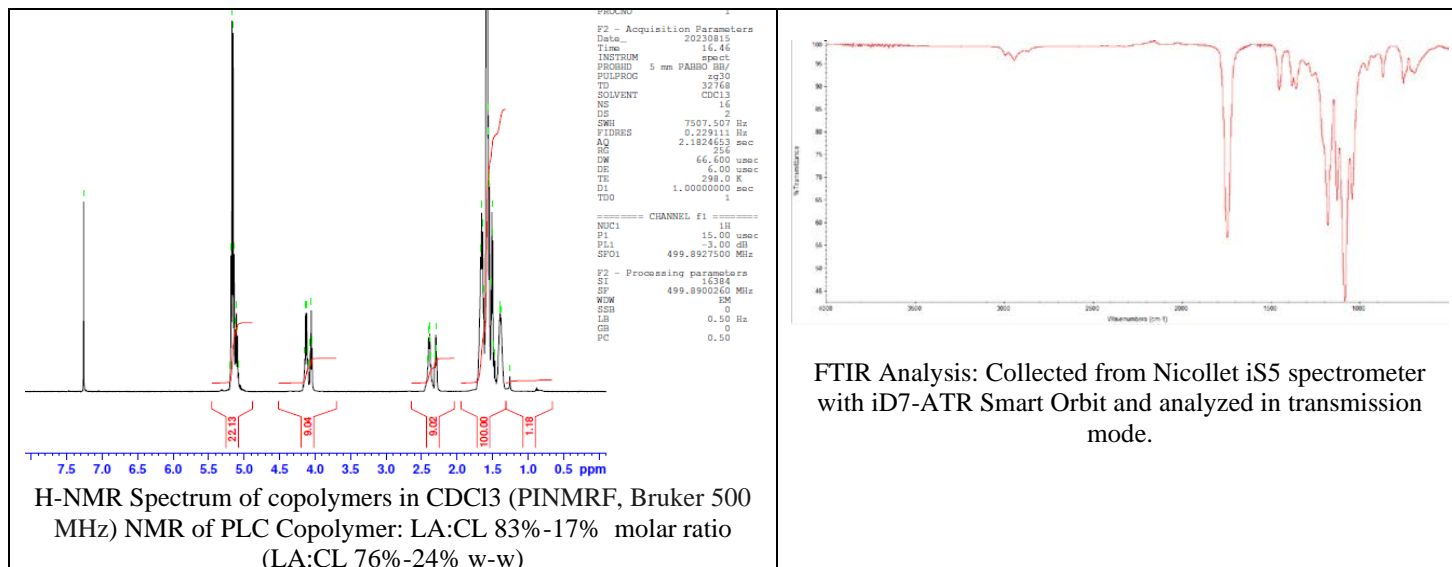


No. CB009

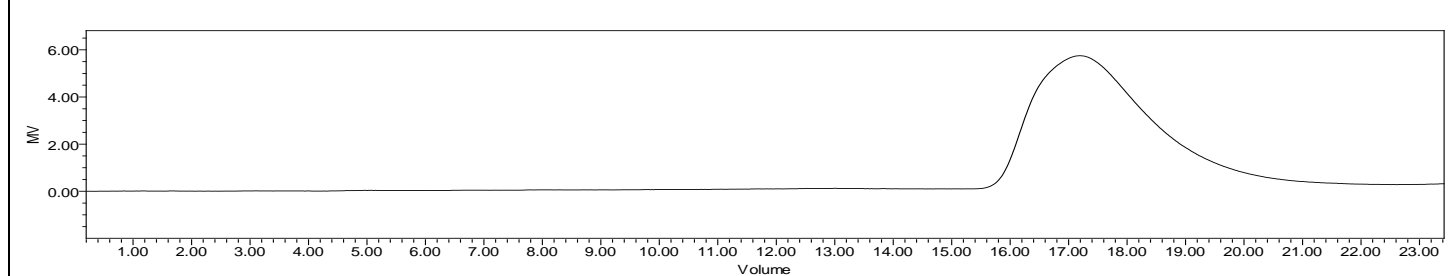
Certificate of Analysis



Product Name: Poly(L-Lactide-co-Caprolactone) I.V. 1.2 – 1.8 dl/g,
LC, ester endcap (PLC 7015) (Lot # 230504CPB-963)



FTIR Analysis: Collected from Nicolet iS5 spectrometer with iD7-ATR Smart Orbit and analyzed in transmission mode.



GPC-ES Analysis Method: Waters Breeze 2 system with 1 ml/min THF flow across three GPC columns. Detection via refractive index, calibrated against polystyrene standards.

Polymer	M _n (from GPC)	M _w (from GPC)	PDI
PLC	105,150	171,677	1.63

Manufacturer Provided Data



Assay	Specification	Result
Tin content	<100 ppm	60 ppm
Water content	<0.50%	0.06%
Residual monomer, L Lactide	<0.50%	0.11%
Residual monomer, Caprolactone	<0.50%	<0.04%
Inherent Viscosity ¹	1.2-1.8 dL/g	1.59 dL/g
Residual solvent	0.10%	0.00%

1 – Measured at 25 °C in Chloroform c=1 g/dL

Approved By:
Amie Tyler
Quality Manager