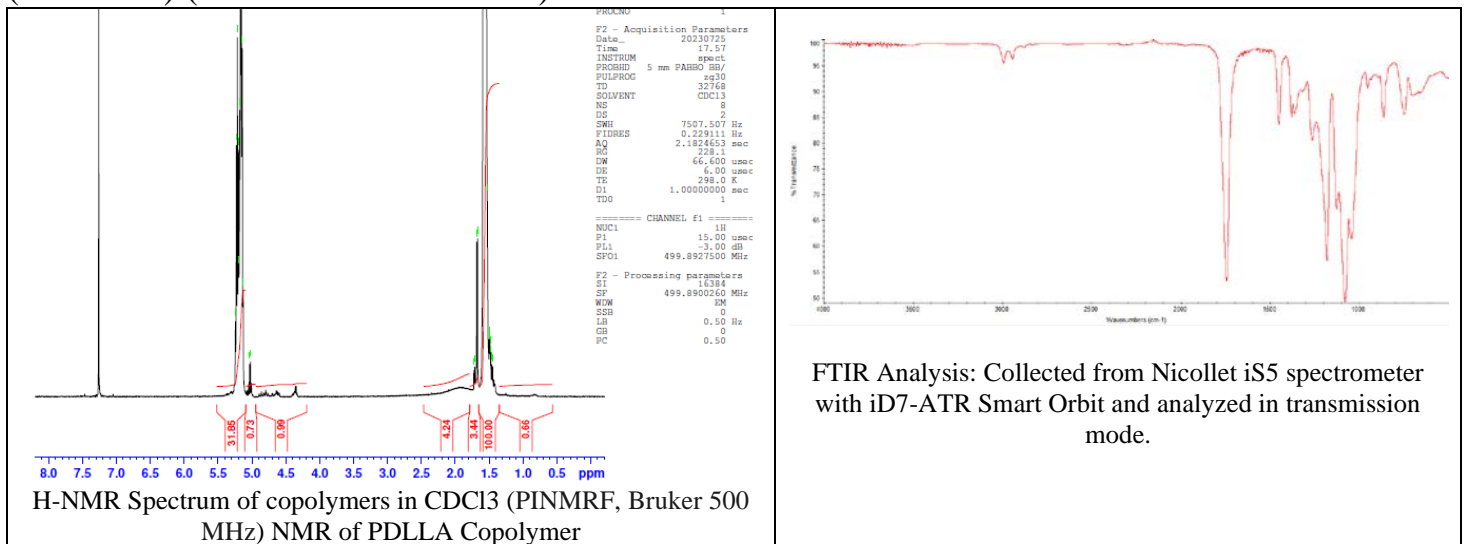


No. CB008

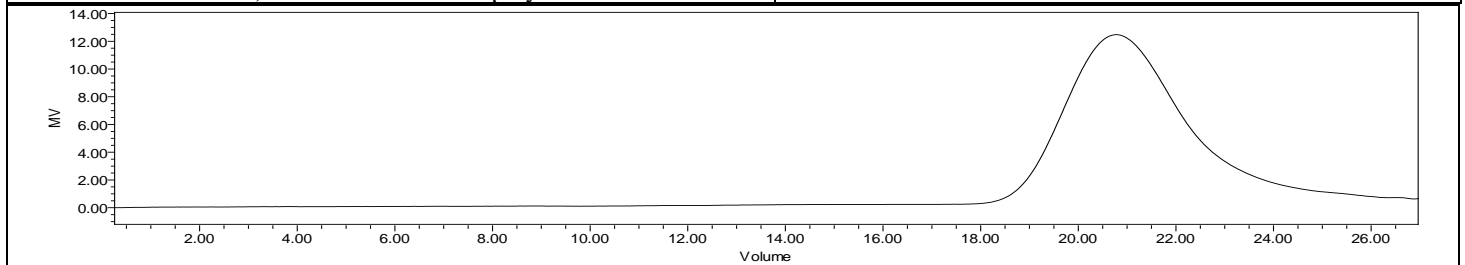
Certificate of Analysis



Product Name: Poly(DL-Lactide) I.V. 0.16 - 0.24 dL/g, acid endcap
(PDL 02A) (Lot # 230301CPB-169)



FTIR Analysis: Collected from Nicolet iS5 spectrometer with iD7-ATR Smart Orbit and analyzed in transmission mode.



GPC-ES Analysis Method: Waters Breeze 2 system with 1 ml/min THF flow across three GPC columns. Detection via refractive index, calibrated against polystyrene standards.

Polymer	M _n (from GPC)	M _w (from GPC)	PDI
PDLLA	9,647	16,310	1.69

Manufacturer Provided Data



Assay	Specification	Result
Total Acid Number ¹	>6.0 mg KOH/g	11.4
Tin content	<50 ppm	13 ppm
Water content	<0.50%	0.03%
Residual monomer, DL Lactide	<2.4%	1.7%
Inherent Viscosity ²	0.16-0.24 dL/g	0.22 dL/g
Endotoxin	<6.00 EU/g	<0.25 EU/g
Residual solvent	<0.10 ppm	0.01 ppm

1 – Measured by titration
2 – Measured at 25 °C in Chloroform, c=1 g/dL

Approved By:
Amie Tyler
Quality Manager