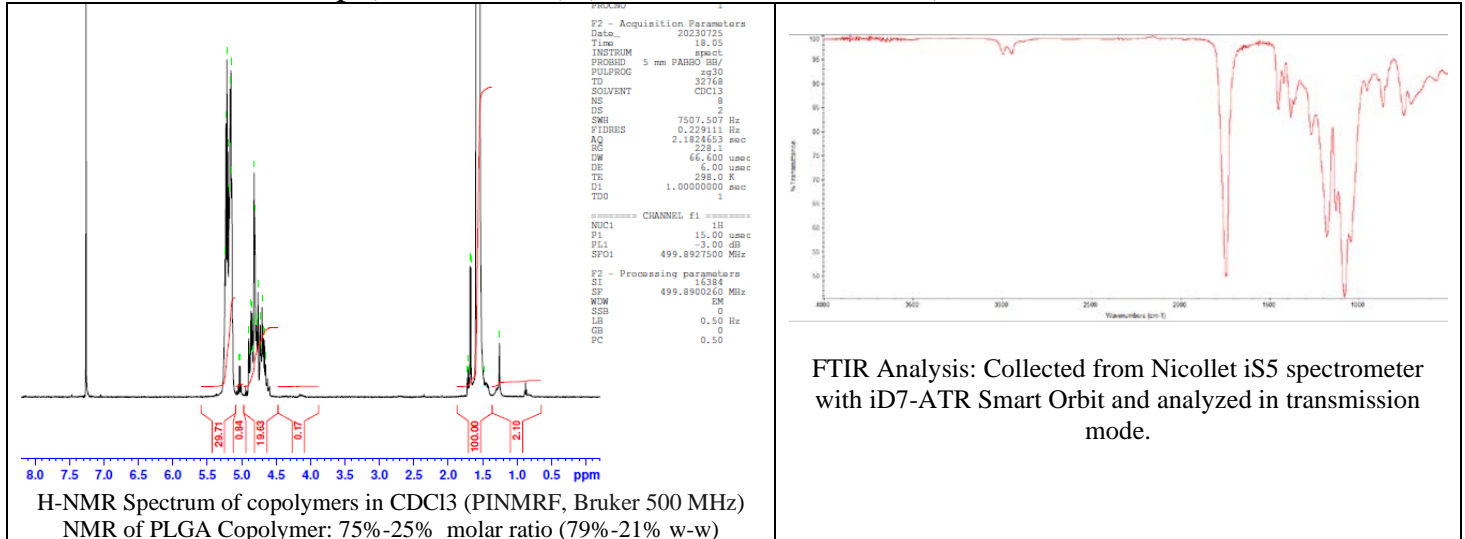


No. CB007

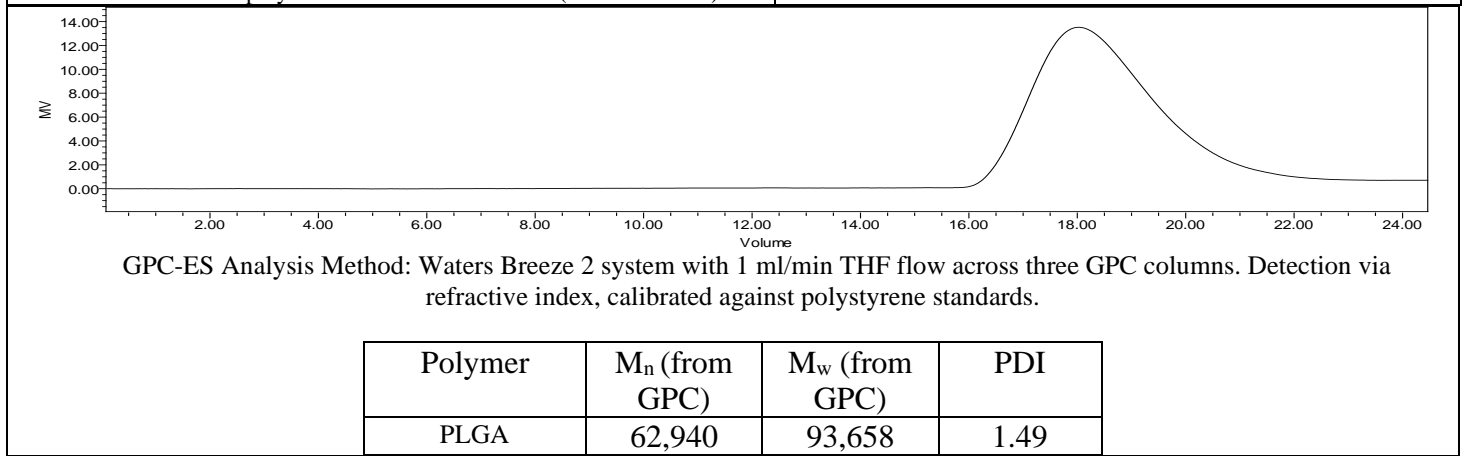
Certificate of Analysis



Product Name: Poly(Lactide-co-glycolide) I.V. 0.56 - 0.84 dL/g,
LG 75:25, ester endcap (PDLG 7507) (Lot # 220425CPB-837)



FTIR Analysis: Collected from Nicolet iS5 spectrometer with iD7-ATR Smart Orbit and analyzed in transmission mode.



Manufacturer Provided Data



Assay	Specification	Result
Tin content	<50 ppm	14 ppm
Water content	<0.50%	0.07%
Residual monomer, DL Lactide	<2.0%	1.3%
Residual monomer, Glycolide	<2.0%	0.0%
Inherent Viscosity ²	0.56-0.84 dL/g	0.76 dL/g
Residual solvent	<0.10%	0.02%

1 – Measured by titration

2 – Measured at 25 °C in Chloroform, c= 0.5 g/dL

Approved By:
Amie Tyler
Quality Manager