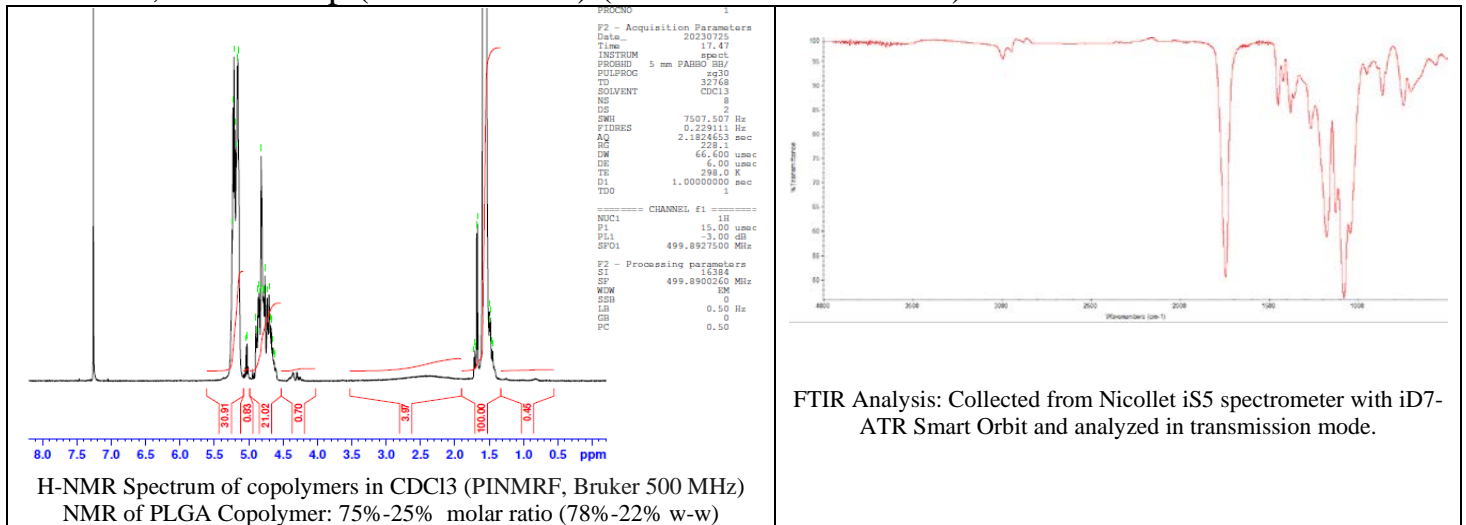


No. CB005

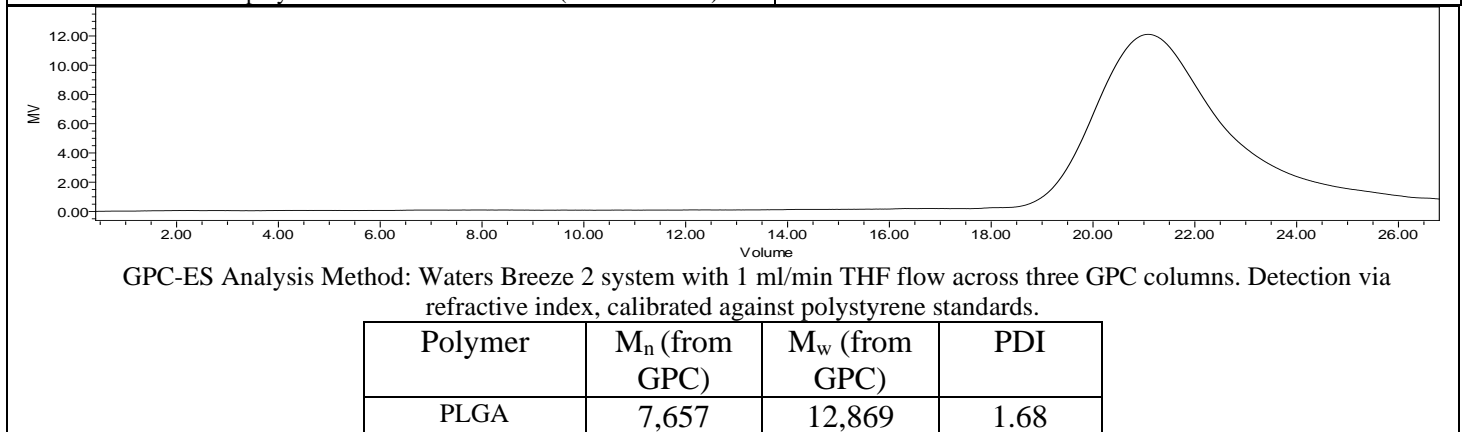
Certificate of Analysis



Product Name: Poly(Lactide-co-glycolide) I.V. 0.16 - 0.24 dL/g,
LG 75:25, acid endcap (PDLG 7502A) (Lot # 230103CPB-771)



FTIR Analysis: Collected from Nicolet iS5 spectrometer with iD7-ATR Smart Orbit and analyzed in transmission mode.



Manufacturer Provided Data



Assay	Specification	Result
Total Acid Number ¹	>6.0 mg KOH/g	11.9 mg KOH/g
Tin content	<50 ppm	24 ppm
Water content	<0.50%	0.02%
Residual monomer, DL Lactide	<2.0%	1.5%
Residual monomer, Glycolide	<2.0%	0.0%
Inherent Viscosity ²	0.16-0.24 dL/g	0.19 dL/g
Endotoxin	<6.0 EU/g	<0.25 EU/g
Residual solvent	<0.10%	0.0%

1 – Measured by titration

2 – Measured at 25 °C in Chloroform, c= 1 g/dL

Approved By:
Amie Tyler
Quality Manager