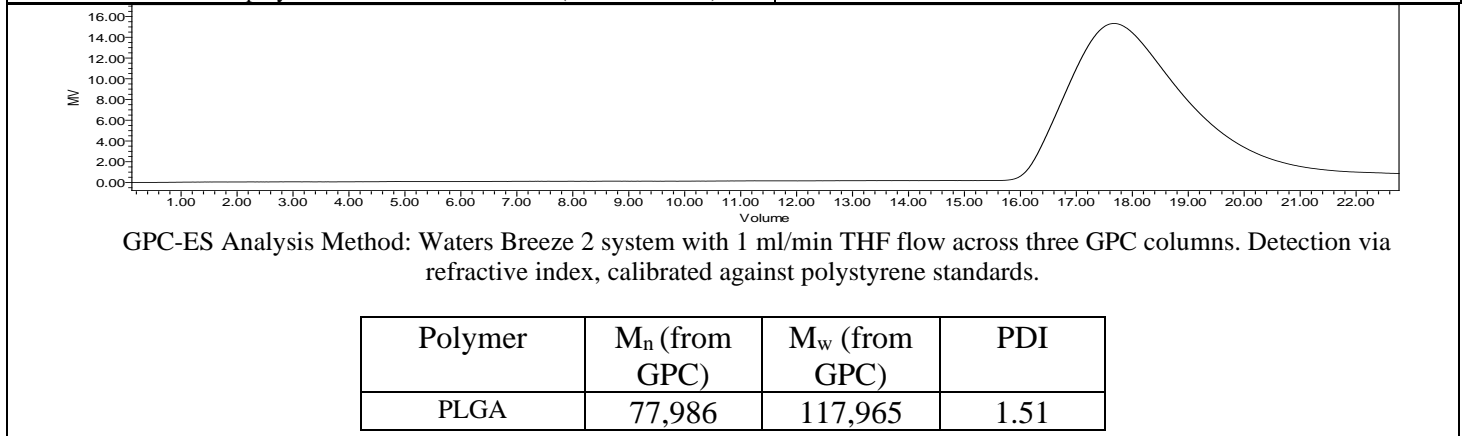
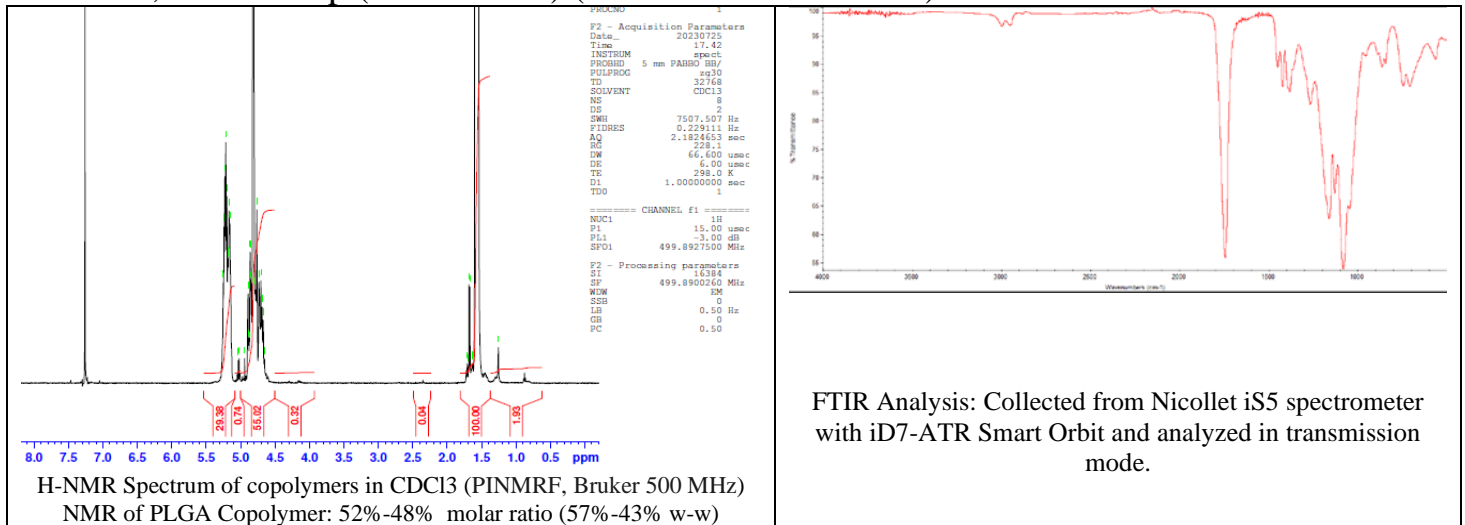


# No. CB004

# Certificate of Analysis



Product Name: Poly(Lactide-co-glycolide) I.V. 0.8 – 1.2 dL/g,  
LG 50:50, acid endcap (PDLG 5010) (Lot # 220403CPB-610)



## Manufacturer Provided Data



Assay	Specification	Result
Tin content	<50 ppm	13 ppm
Water content	<0.5%	0.04%
Residual monomer, DL Lactide	<1.5%	0.92%
Residual monomer, Glycolide	<0.2%	0.11%
Inherent Viscosity <sup>2</sup>	0.80-1.2 dL/g	1.02 dL/g
Residual solvent	<0.10%	0.02

1 – Measured by titration

2 – Measured at 25 °C in Chloroform, c=0.1 g/dL

Approved By:  
Amie Tyler  
Quality Manager