

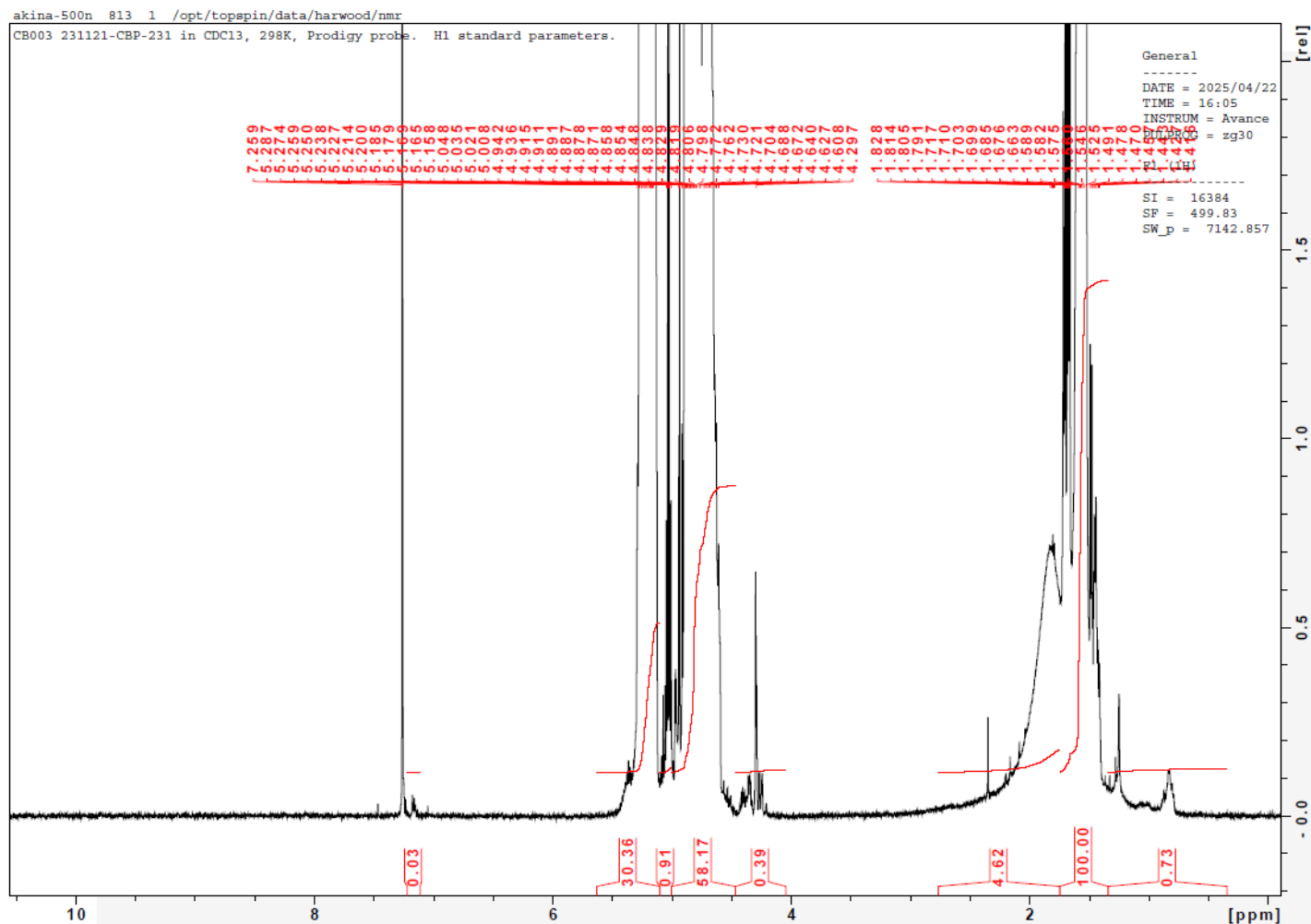
No. CB003

Certificate of Analysis



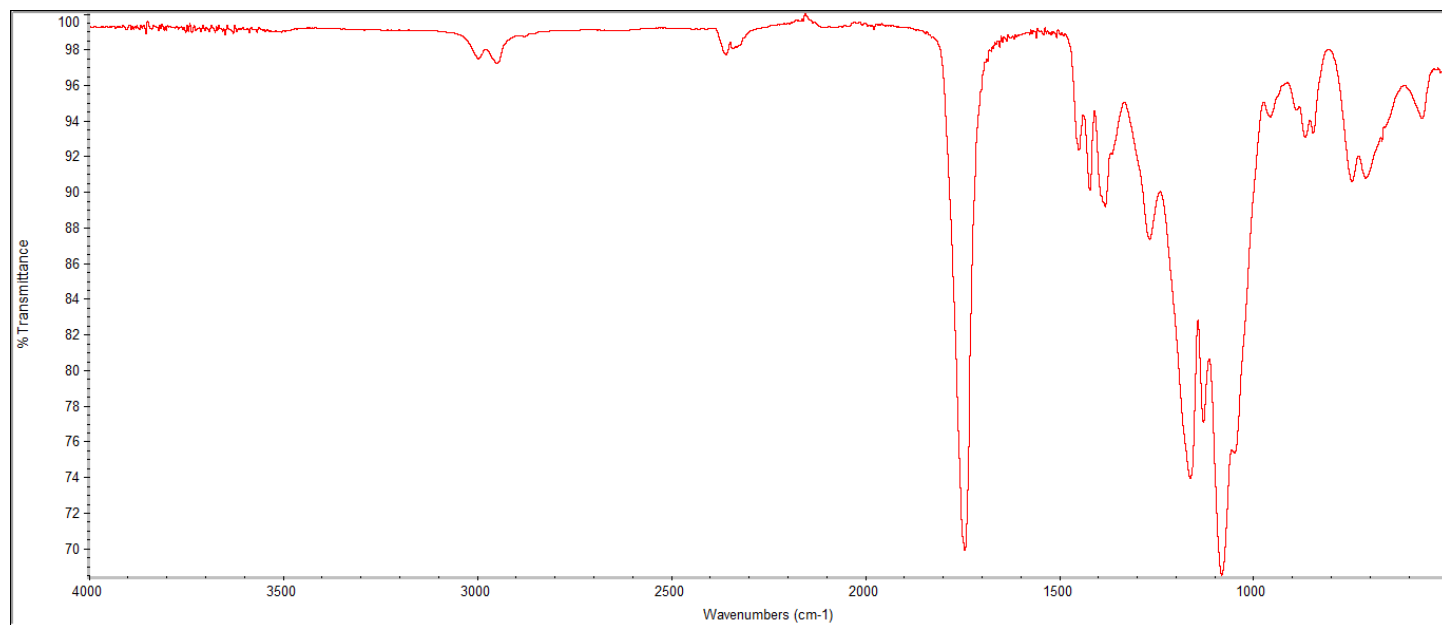
Product Name: Poly(Lactide-co-glycolide) I.V. 0.32 - 0.48 dL/g, LG 50:50, acid endcap
(PDLG 5004A) (Lot#: 231121CBP-231)

H-NMR



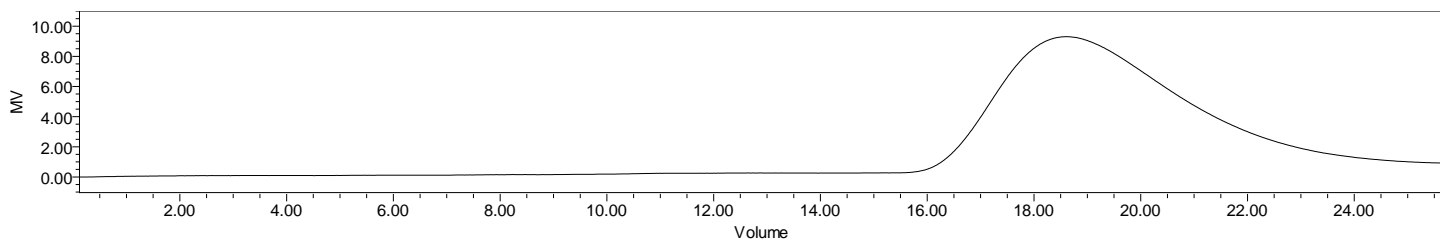
H-NMR Spectrum of copolymers in CDCl₃ (NMReady-60e, Nanalysis 60 MHz) NMR of PLGA copolymer: LA-GA =51%-49% molar ratio (LA:GA 56%:44% w:w)

FTIR



FTIR Analysis: Collected from IS5 ID7-ATR spectrometer (Thermo Scientific) and analyzed in transmission mode.

GPC-ES



Polymer	M _n (from GPC)	M _w (from GPC)	PDI
PLGA	30,436	41,346	1.36

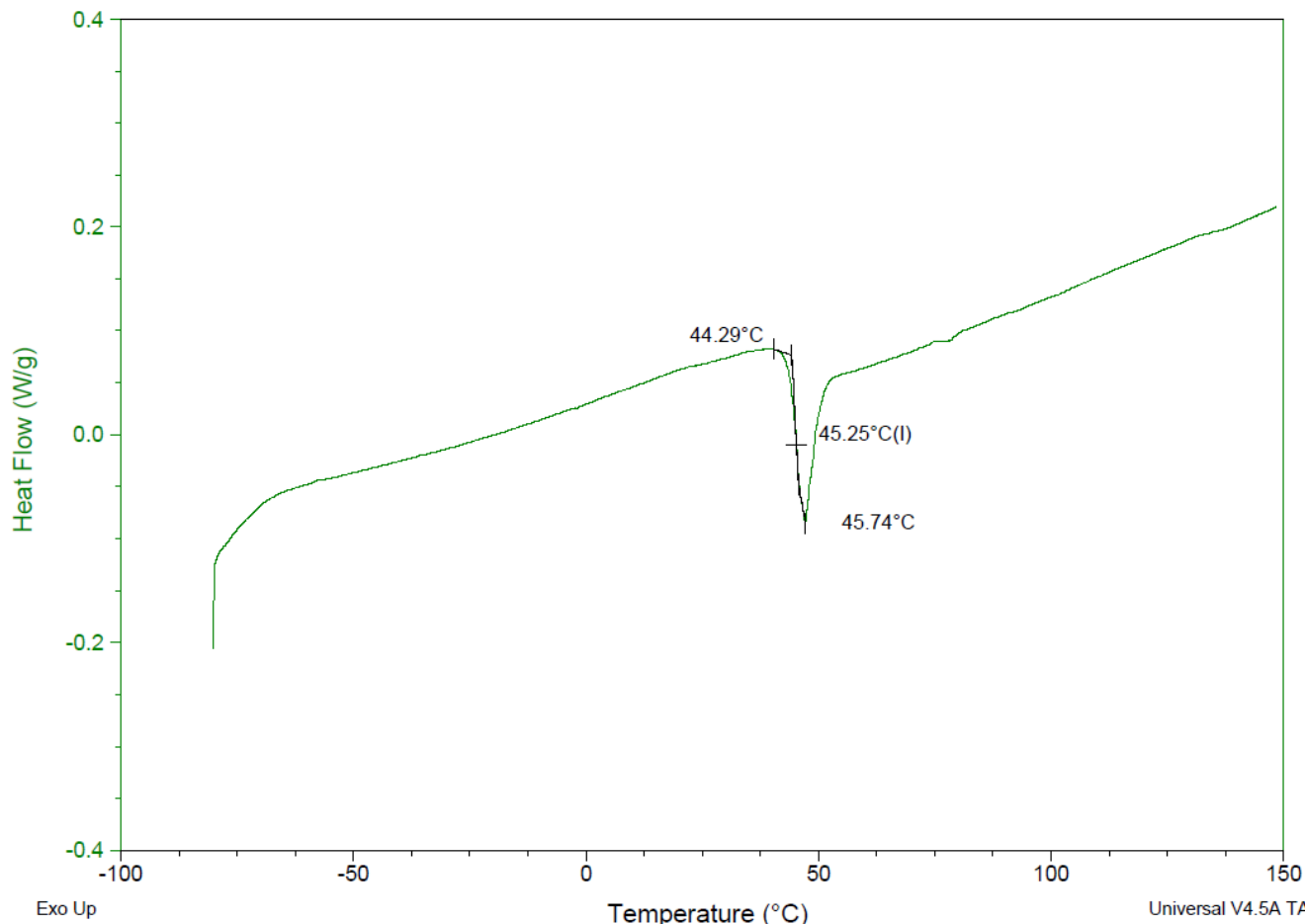
GPC-ES Analysis Method: Waters Breeze 2 system with 1 ml/min THF flow across three GPC columns. Detection via refractive index, calibrated against polystyrene standards.

DSC

Sample: CB003 231121CBP-231
Size: 3.8000 mg
Method: Modulate-no-eqb

DSC

File: C:\...\COA\CB003 231121CBP-231.001
Run Date: 24-Apr-2025 11:03
Instrument: DSC Q2000 V24.11 Build 124



DSC Testing: 1-5 mg sample tested in crimped aluminum pan on a TA Instruments Model Q2000 with procedure equilibraion 100 °C, isothermal 5 minutes, equilibrate -80 °C, data on, ramp 10 °C/min to 150 °C. Tg = 45.25 °C

Manufacturer Provided Data



Assay	Specification	Result
Total Acid Number ¹	LL 3.0 mg KOH/g	3.9
Tin content	<50 ppm	11 ppm
Water content	<0.50%	<0.04%
Residual monomer, DL Lactide	<2.0%	1.1%
Residual monomer, Glycolide	<2.0%	0.1%
Inherent Viscosity ²	0.32-0.48 dL/g	0.39 dL/g
Residual solvent	<0.10%	0.01

1 – Measured by titration

2 – Measured at 25 °C in Chlorofom, c=1g/dL

Approved By:
Amie Tyler
Quality Manager