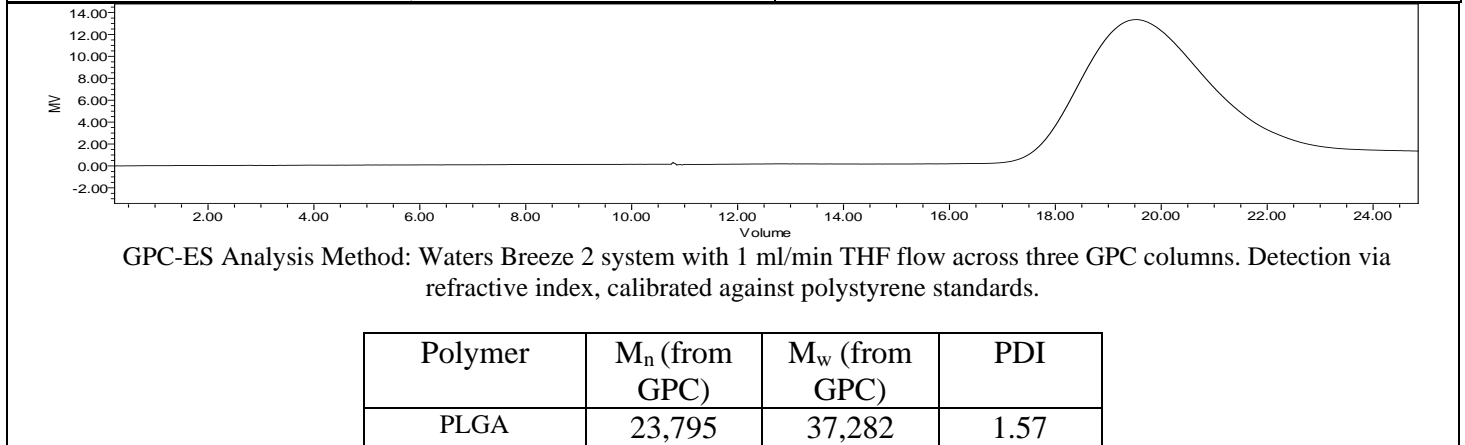
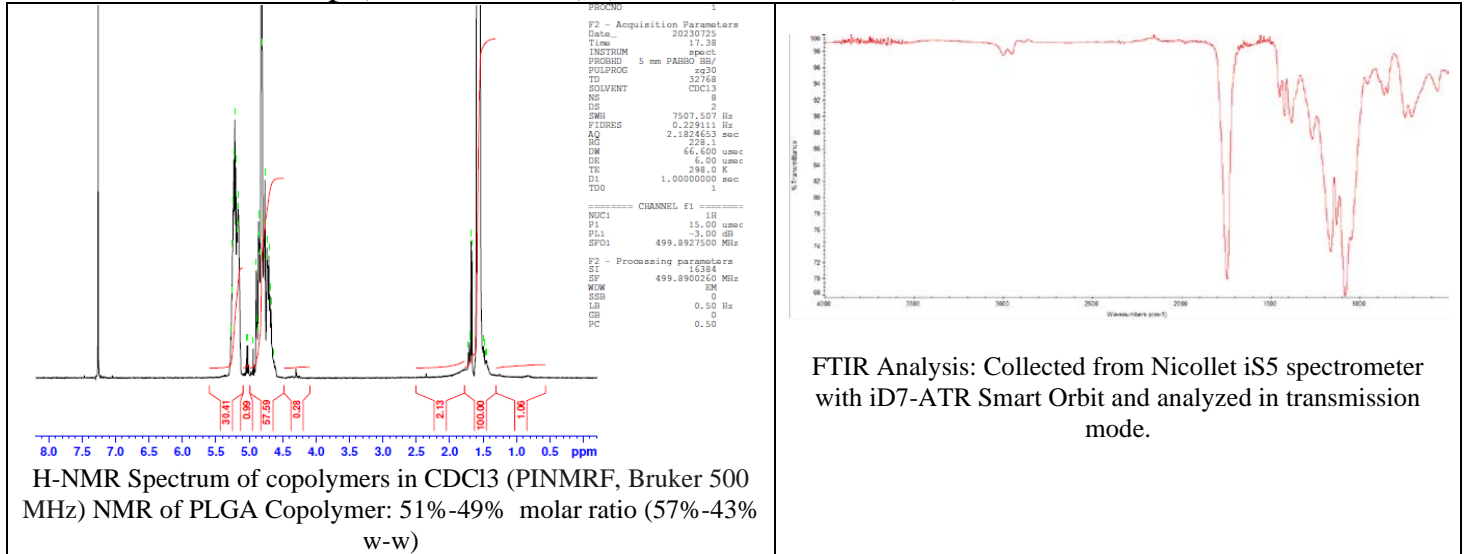


No. CB003

Certificate of Analysis



Product Name: Poly(Lactide-co-glycolide) I.V. 0.32 - 0.48 dL/g,
LG 50:50, acid endcap (PDLG 5004A) (Lot # 230330CPB-225)



Manufacturer Provided Data



Assay	Specification	Result
Total Acid Number ¹	>3.0 mg KOH/g	3.9 mg/g
Tin content	<50 ppm	11 ppm
Water content	<0.50%	0.03%
Residual monomer, DL Lactide	<2.0%	1.1%
Residual monomer, Glycolide	<2.0%	0.1%
Inherent Viscosity ²	0.32-0.48 dL/g	0.39 dL/g
Endotoxin	<6 EU/g	<0.25 EU/g
Residual solvent	<0.10%	0.02%

1 – Measured by titration

2 – Measured at 25 °C in Chloroform c=0.5 g/dL

Approved By:
Amie Tyler
Quality Manager