

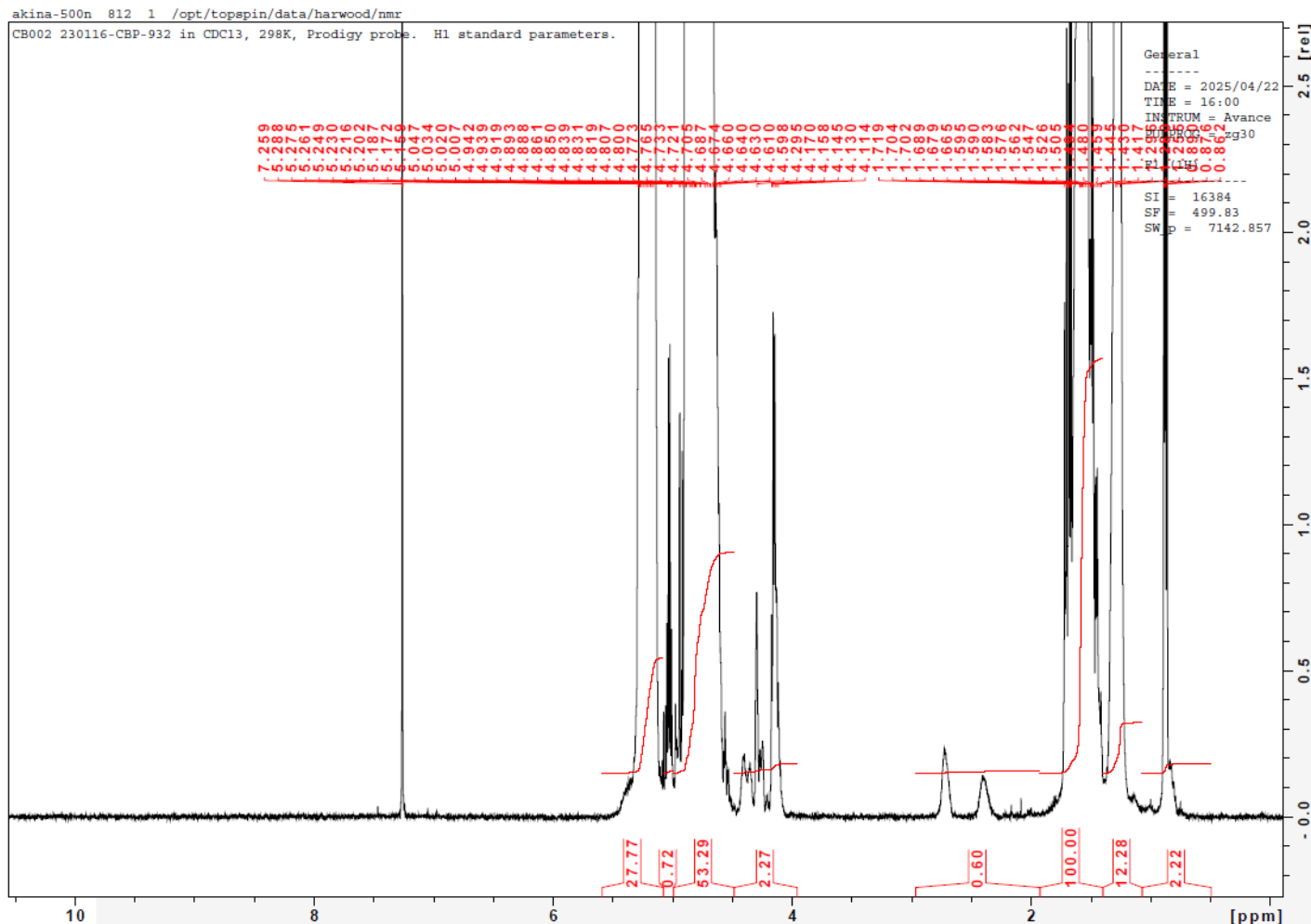
No. CB002

Certificate of Analysis



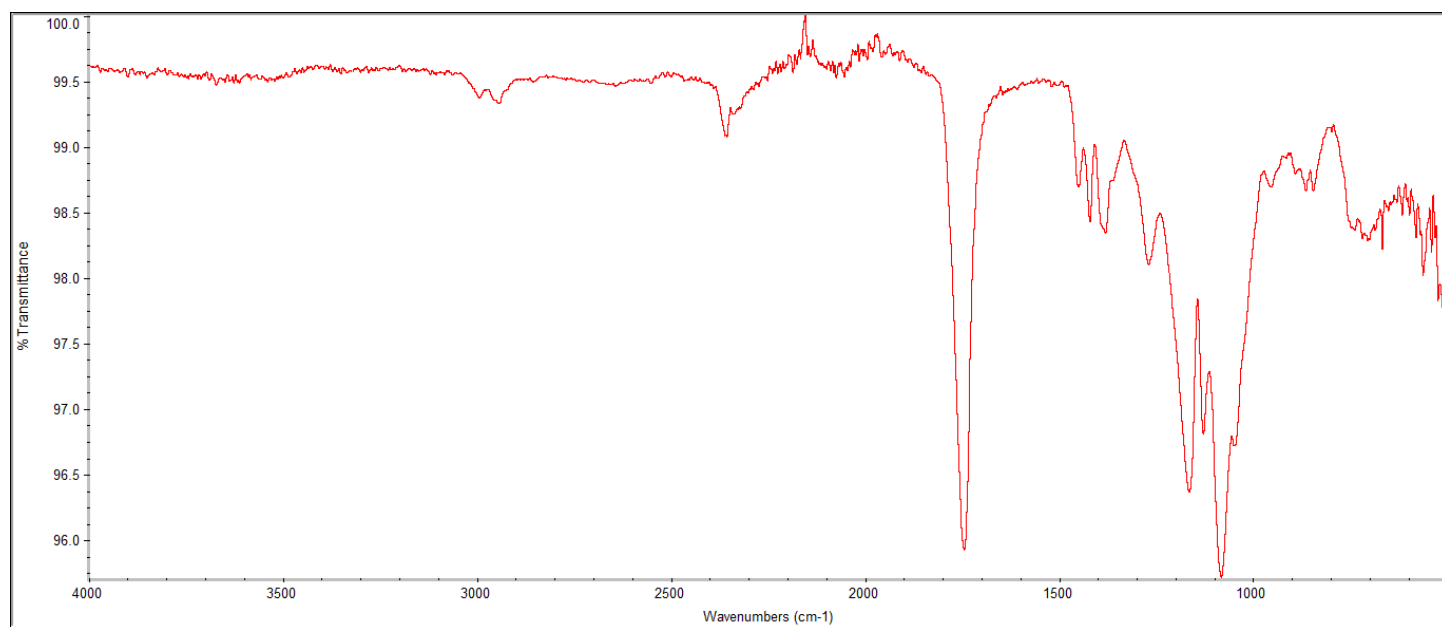
Product Name: Poly(Lactide-co-glycolide) I.V. 0.16 - 0.24 dL/g, LG 50:50, ester endcap
(PDLG 5002) (Lot#: 230116CBP-932)

H-NMR



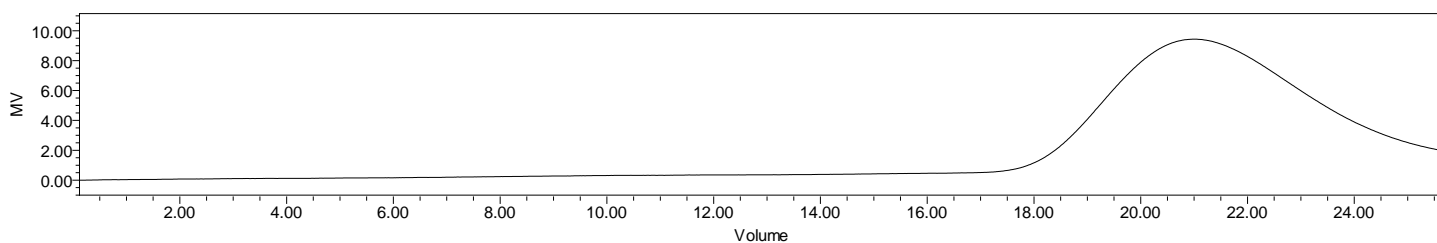
H-NMR Spectrum of copolymers in CDCl₃ (NMReady-60e, Nanalysis 60 MHz) NMR of PLGA copolymer: LA-GA =51%-49% molar ratio (LA:GA 56%:44% w:w)

FTIR



FTIR Analysis: Collected from IS5 ID7-ATR spectrometer (Thermo Scientific) and analyzed in transmission mode.

GPC-ES



Polymer	M _n (from GPC)	M _w (from GPC)	PDI
PLGA	11,971	16,869	1.41

GPC-ES Analysis Method: Waters Breeze 2 system with 1 ml/min THF flow across three GPC columns. Detection via refractive index, calibrated against polystyrene standards.

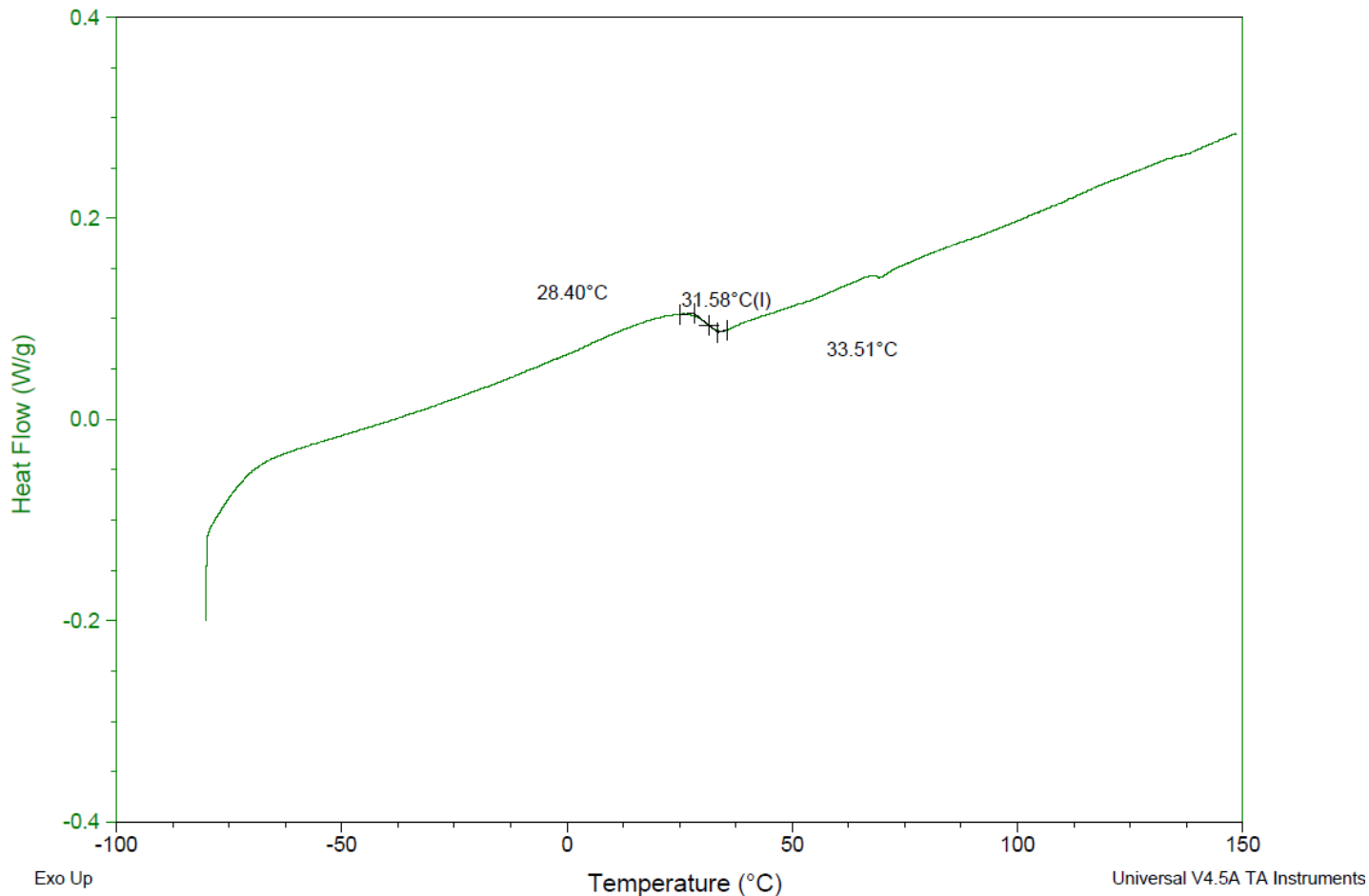
DSC

Sample: CB002 230116CBP-932
Size: 4.4000 mg
Method: Modulate-no-eqb

DSC

File: C:\...\COA\CB002 230116CBP-932 DSC.001

Run Date: 24-Apr-2025 12:16
Instrument: DSC Q2000 V24.11 Build 124



DSC Testing: 1-5 mg sample tested in crimped aluminum pan on a TA Instruments Model Q2000 with procedure equilibraion 100 °C, isothermal 5 minutes, equilibrate -80 °C, data on, ramp 10 °C/min to 150 °C. Tg = 31.58 °C

Manufacturer Provided Data



Assay	Specification	Result
Total Acid Number ¹	<1.0 mg KOH/g	<0.7
Tin content	<50 ppm	8 ppm
Water content	<0.50%	<0.02%
Residual monomer, DL Lactide	<2.0%	0.8%
Residual monomer, Glycolide	<2.0%	0.1%
Inherent Viscosity ²	0.16-0.24 dL/g	0.20 dL/g
Residual solvent	<0.10%	0.00

1 – Measured by titration

2 – Measured at 25 °C in Chlorofom, c=1g/dL

Approved By:
Amie Tyler
Quality Manager