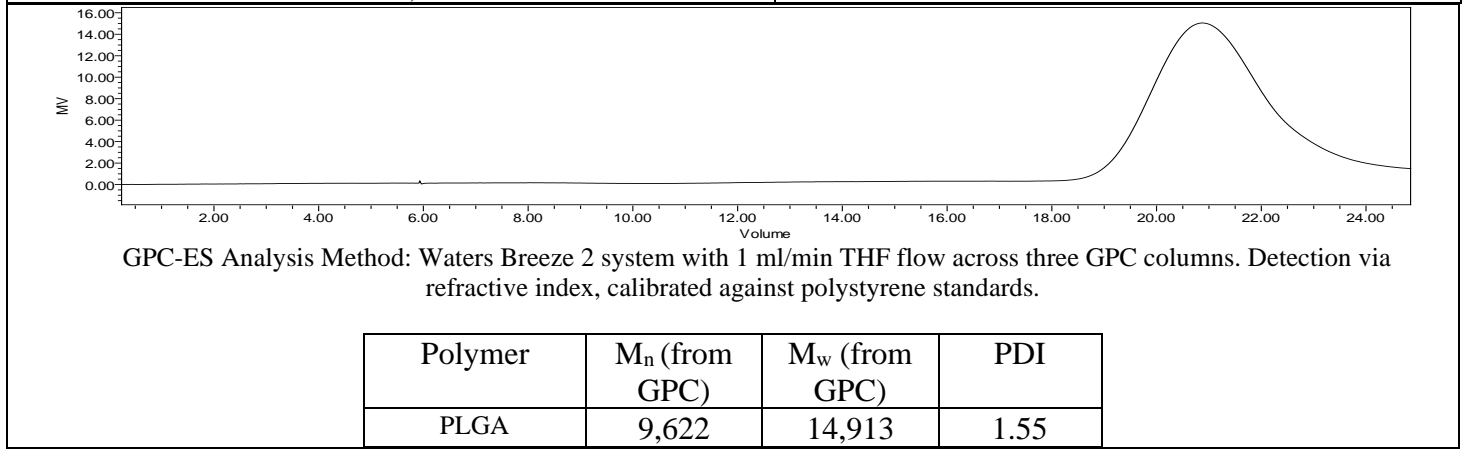
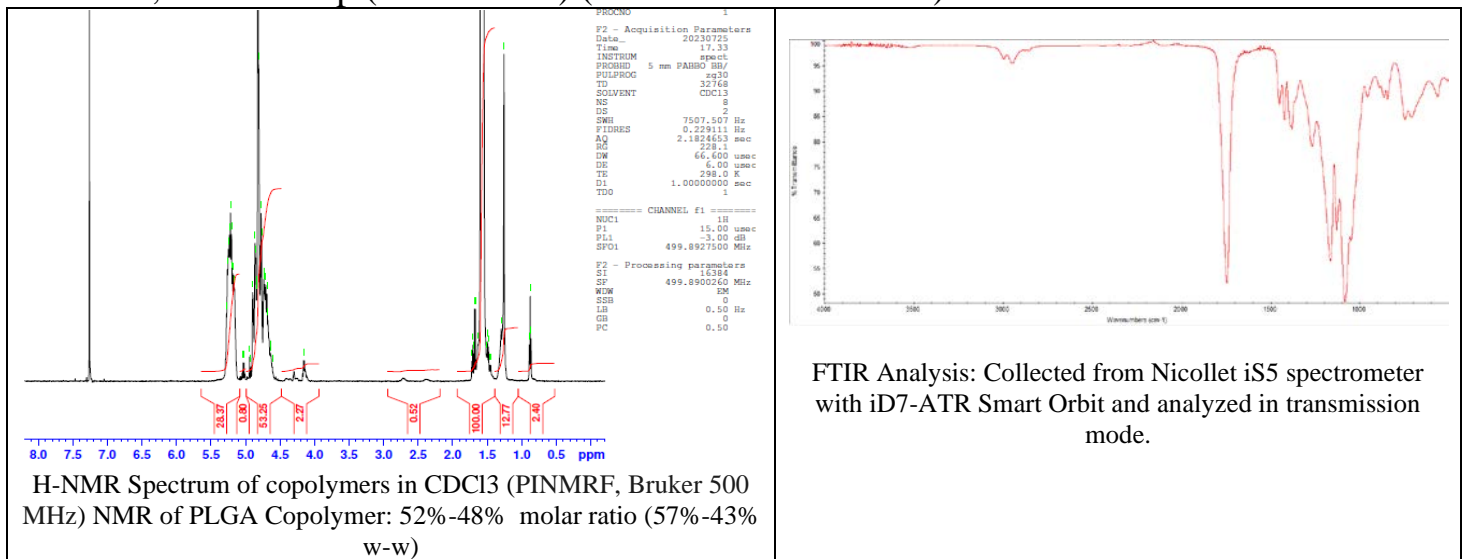


No. CB002

Certificate of Analysis



Product Name: Poly(Lactide-co-glycolide) I.V. 0.16 - 0.24 dL/g,
LG 50:50, ester endcap (PDLG 5002) (Lot # 210817CPB-161)



Manufacturer Provided Data



Assay	Specification	Result
Total Acid Number ¹	<1.0 mg KOH/g	0.2
Tin content	<50 ppm	7 ppm
Water content	<0.50%	0.02%
Residual monomer, DL Lactide	<2.0%	0.7%
Residual monomer, Glycolide	<2.0%	0.1%
Inherent Viscosity ²	0.16-0.24 dL/g	0.20 dL/g
Residual solvent	<0.10%	0.00

1 – Measured by titration
2 – Measured at 25 °C in Chloroform, c=1g/dL

Approved By:
Amie Tyler
Quality Manager