

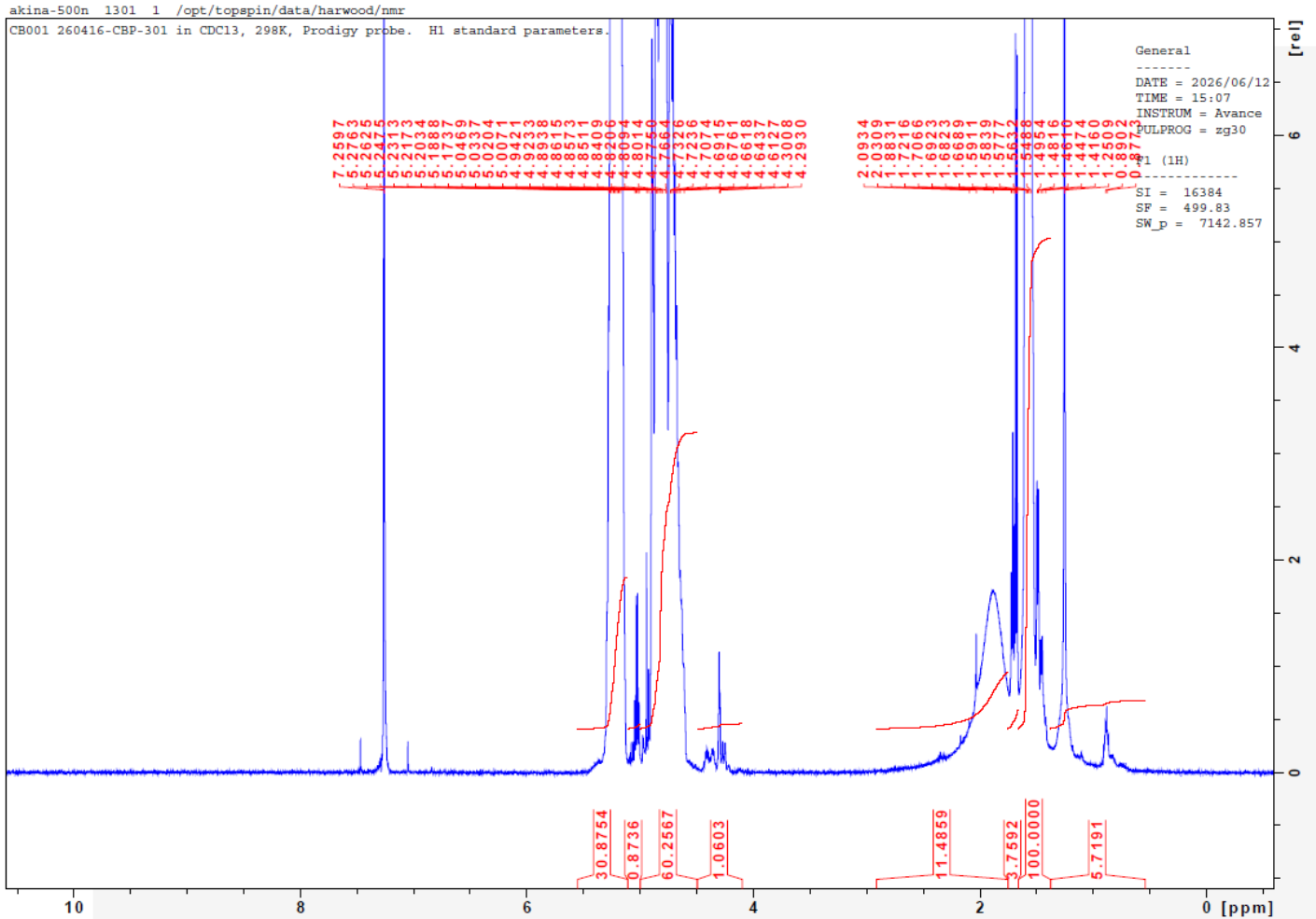
No. CB001

Certificate of Analysis



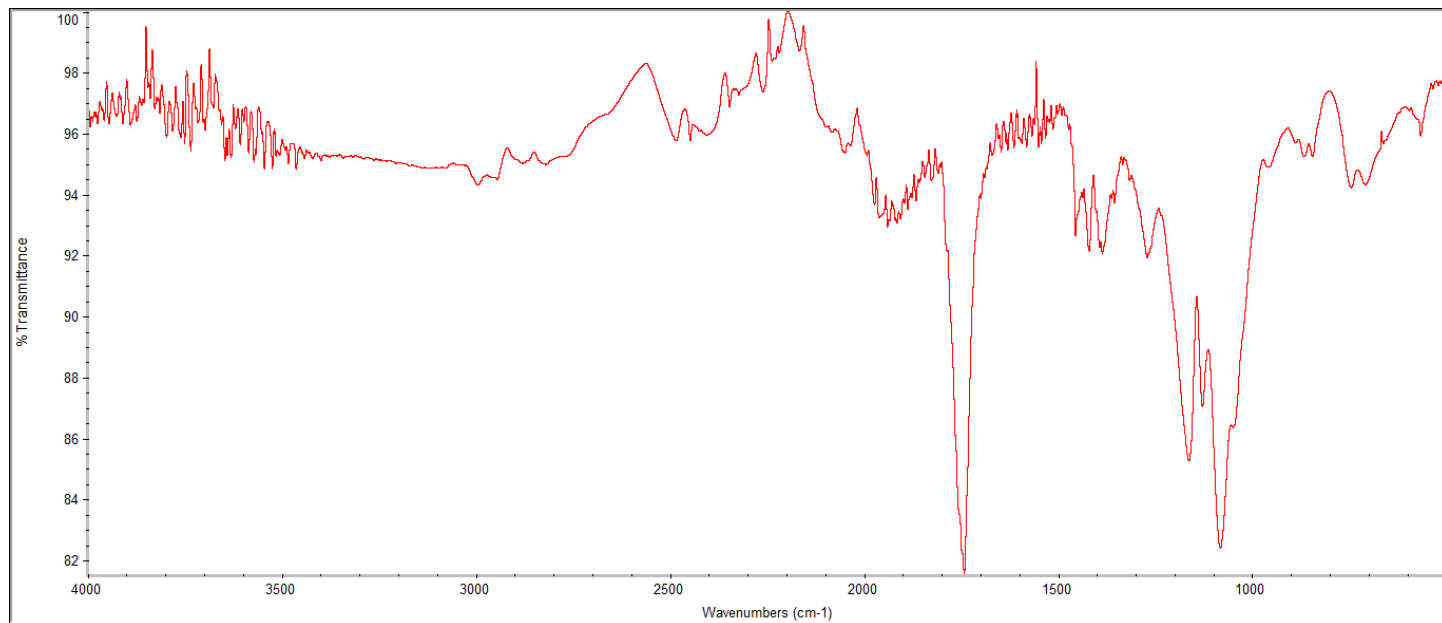
Product Name: Poly(Lactide-co-glycolide) I.V. 0.16 - 0.24 dl/g,
LG 50:50, acid endcap (PDLG 5002A) (Lot # 260416CPB-301)

H-NMR



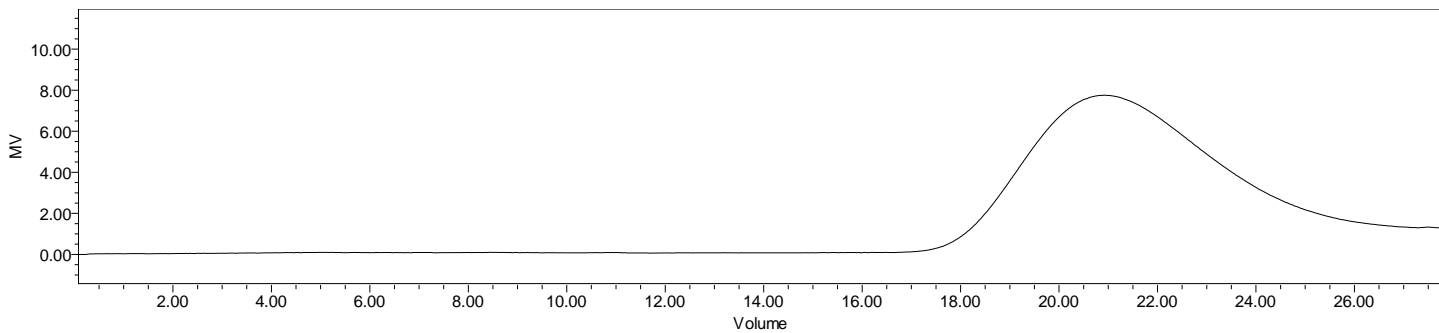
H-NMR Spectrum of copolymers in CDCl₃ (NMReady-60e, Nanalysis 60 MHz) NMR of PLGA copolymer: LA-GA =51%-49% molar ratio (LA:GA 56%:44% w:w)

FTIR



FTIR Analysis: Collected from IS5 ID7-ATR spectrometer (Thermo Scientific) and analyzed in transmission mode.

GPC-ES



Polymer	M _n (from GPC)	M _w (from GPC)	PDI
PLGA	12,711	17,622	1.39

GPC-ES Analysis Method: Waters Breeze 2 system with 1 ml/min THF flow across three GPC columns. Detection via refractive index, calibrated against polystyrene standards.

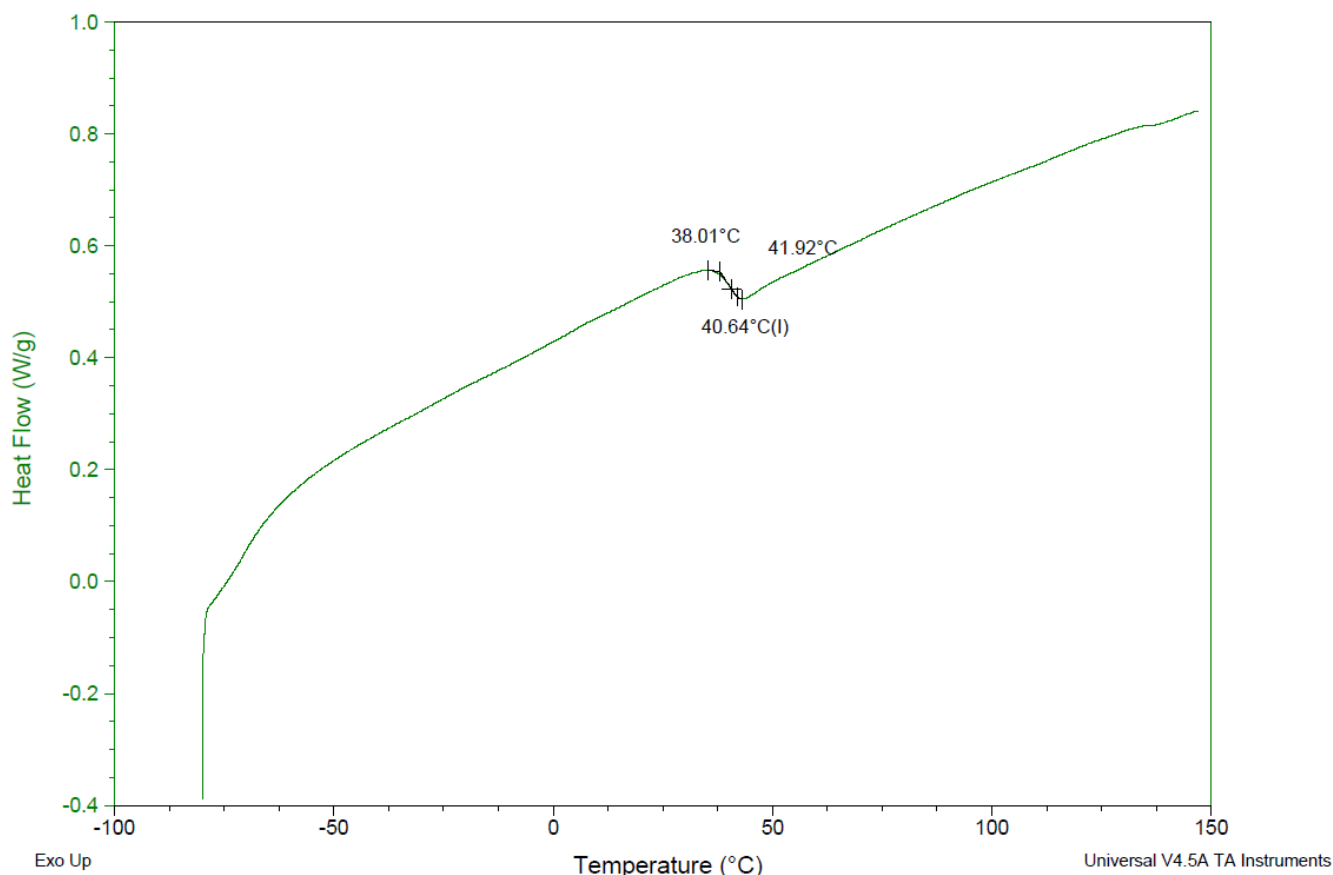
DSC

Sample: CB001 260416CBP-301
 Size: 2.3000 mg
 Method: Ramp

DSC

File: C:\...COA\CB001 260416CBP-301.001

Run Date: 11-Jun-2026 09:24
 Instrument: DSC Q2000 V24.11 Build 124



DSC Testing: 1-5 mg sample tested in crimped aluminum pan on a TA Instruments Model Q2000 with procedure equilibraion 100 °C, isothermal 5 minutes, equilibrate -80 °C, data on, ramp 10 °C/min to 150 °C. Tg =40.64 °C



Manufacturer Provided Data

Assay	Specification	Result
Total Acid Number ¹	>6.0 mg KOH/g	9.6 mg/g
Tin content	<100ppm	56 ppm
Water content	<0.50%	0.03%
Residual monomer, DL Lactide	<2.0%	0.9%
Residual monomer, Glycolide	<2.0%	0.1%
Inherent Viscosity ²	0.16-0.24dL/g	0.20 dL/g
Residual solvent	<0.10%	0.0 %

1 – Measured by titration

2 – Measured at 25 °C in Chloroform c=1 g/dL

Approved By:
Amie Tyler
 Quality Manager