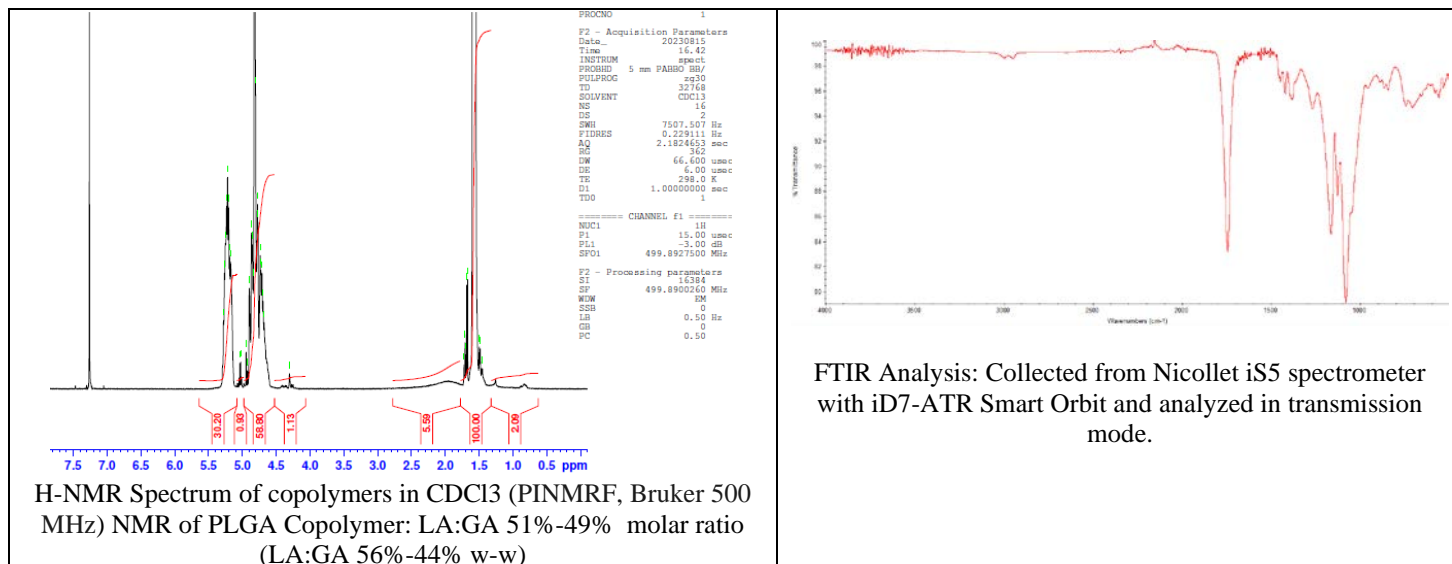


No. CB001

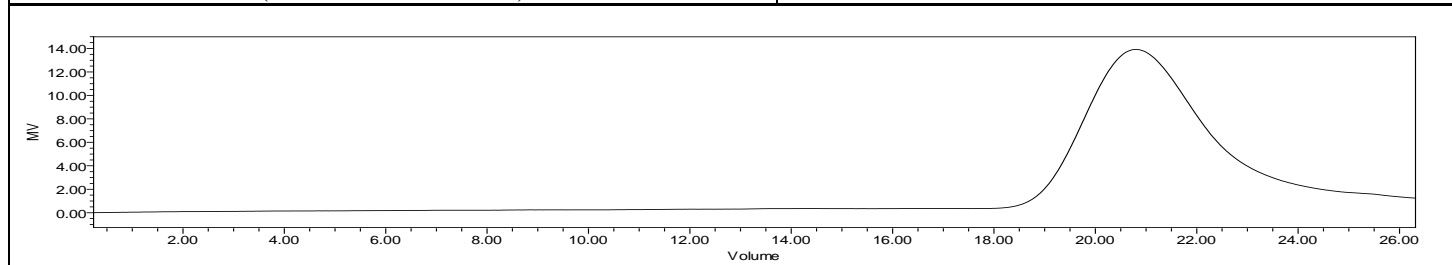
Certificate of Analysis



Product Name: Poly(Lactide-co-glycolide) I.V. 0.16 - 0.24 dl/g,
LG 50:50, acid endcap (PDLG 5002A) (Lot # 221017CPB-207)



FTIR Analysis: Collected from Nicolet iS5 spectrometer with iD7-ATR Smart Orbit and analyzed in transmission mode.



Polymer	M _n (from GPC)	M _w (from GPC)	PDI
PLGA	8902	15,328	1.72

Manufacturer Provided Data



Assay	Specification	Result
Total Acid Number ¹	>6.0 mg KOH/g	9.7 mg KOH/g
Tin content	<100 ppm	64 ppm
Water content	<0.50%	0.02%
Residual monomer, DL Lactide	<2.0%	1.0%
Residual monomer, Glycolide	<2.0%	0.1%
Inherent Viscosity ²	0.16-0.24 dL/g	0.21 dL/g
Residual solvent	<0.1%	0.00%

1 – Measured by titration

2 – Measured at 25 °C in Chloroform c=1 g/Dl

Approved By:
Amie Tyler
Quality Manager