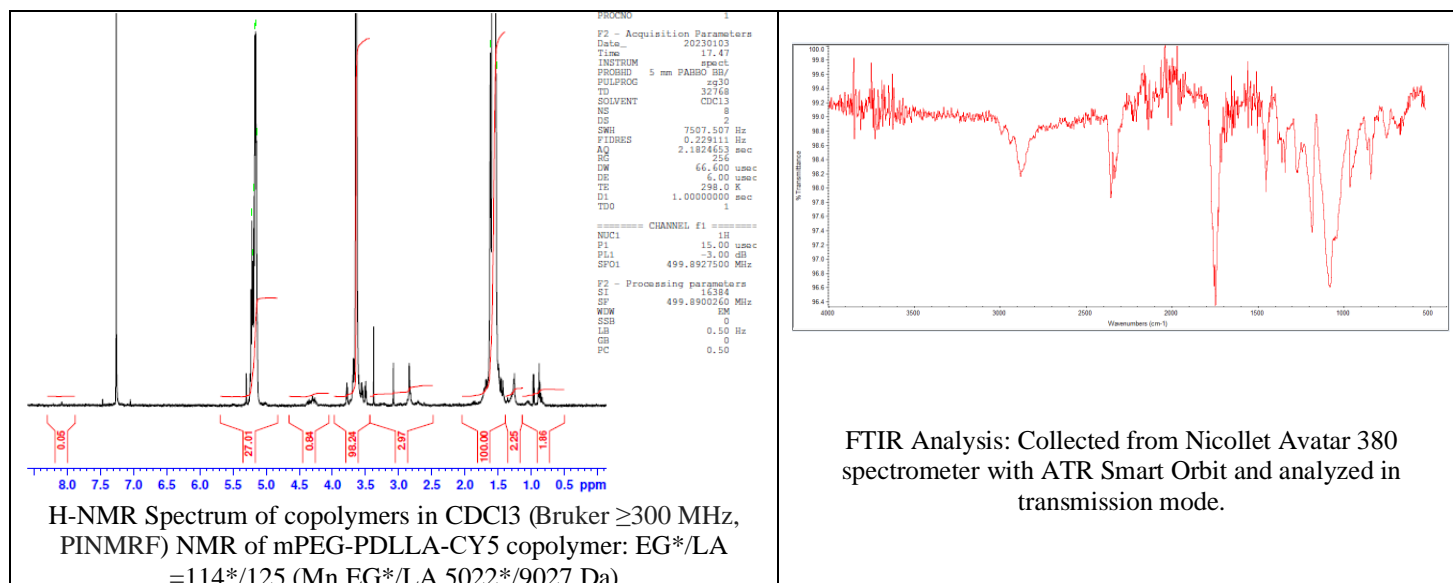


No. AV050

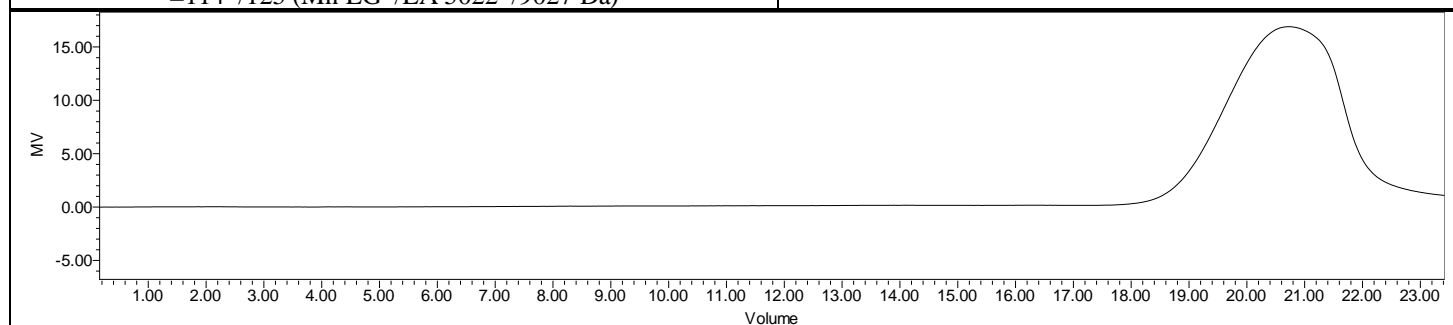
Certificate of Analysis



Product Name: Methoxy-Poly(ethylene glycol)-b-Poly((DL) lactide)-CY5 copolymers ($M_w \sim 5,000-10,000$ Da) (Lot#: 221215RAI-B)



FTIR Analysis: Collected from Nicolet Avatar 380 spectrometer with ATR Smart Orbit and analyzed in transmission mode.

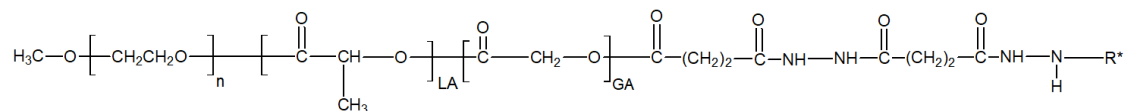


GPC-ES Analysis Method: Waters Breeze 2 system with 1 ml/min THF flow across three GPC columns. Detection via refractive index, calibrated against polystyrene standards.

Polymer	M_n (from GPC)	M_w (from GPC)	PDI
mPEG-PDLLA-CY5	14,350	19,057	1.33
mPEG Precursor*	5022*		

*- from MFG data

• Structure of mPEG-PLA-CY5



“R*” - Cyanine-5 Dye molecule

Dye Content: Testing of absorbance of polymer in DCM solution at 653 nm as compared to series of standards has indicated a dye content of: 132.28 $\mu\text{g}/\text{mg}$ polymer.