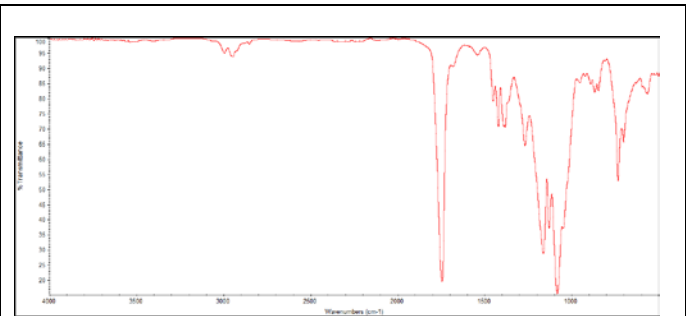
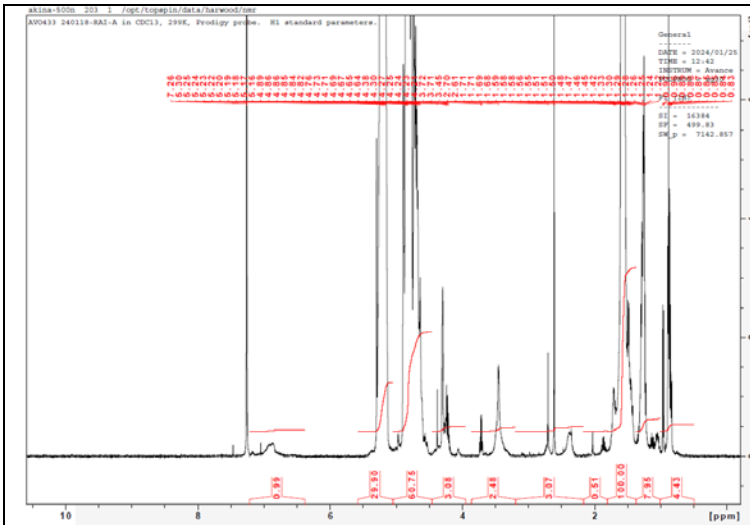


No. AV043

Certificate of Analysis

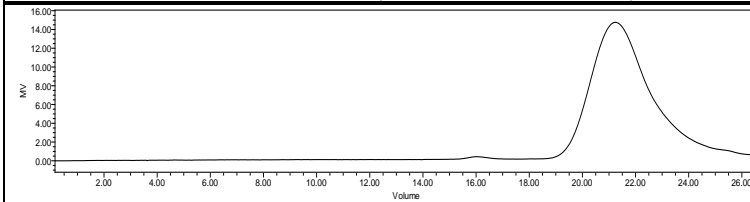


Product Name: Poly(lactide-co-glycolide) – 800CW copolymer
(Mn: 10,000-15,000 Da) (Lot# 240118RAI-A)

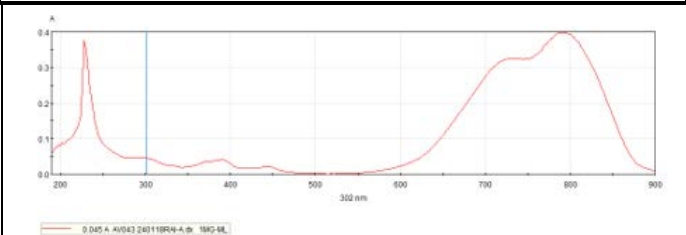


FTIR Analysis: Collected from IS5 ID7-ATR spectrometer (ThermoFisher) and analyzed in transmission mode.

H-NMR Spectrum of copolymers in CDCl₃ (NMReady-60e, Nanalysis 60 MHz) NMR of PLGA-800CW Copolymer: LA:GA 50%:50% molar ratio (LA:GA 55%:45% w-w)



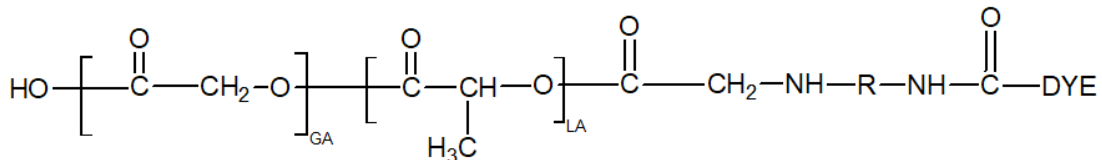
GPC-ES Analysis Method: Waters Breeze 2 system with 1 ml/min THF flow across three GPC columns. Detection via refractive index, calibrated against polystyrene standards.



Dye Content: Absorbance (1mg/mL) w/v sample in DMSO against DMSO blank at indicated wavelengths. Testing of absorbance of polymer in DMSO solution at 797nm as compared to series of 800CW-NHS ester standards has indicated a dye content of: 7.39µg/mg polymer.

Polymer	M _n (from GPC)	M _w (from GPC)	PDI
PLGA-800CW	7769	11,967	1.54

Structure of PLGA-800CW copolymer



“R” – ethylene bridge

“DYE” – 800CW reacted ester (LiCor, P/N: 929-70020, C₅₀H₅₄N₃Na₃O₁₇S₄)

Approved By:
Amie Tyler
Quality Manager