

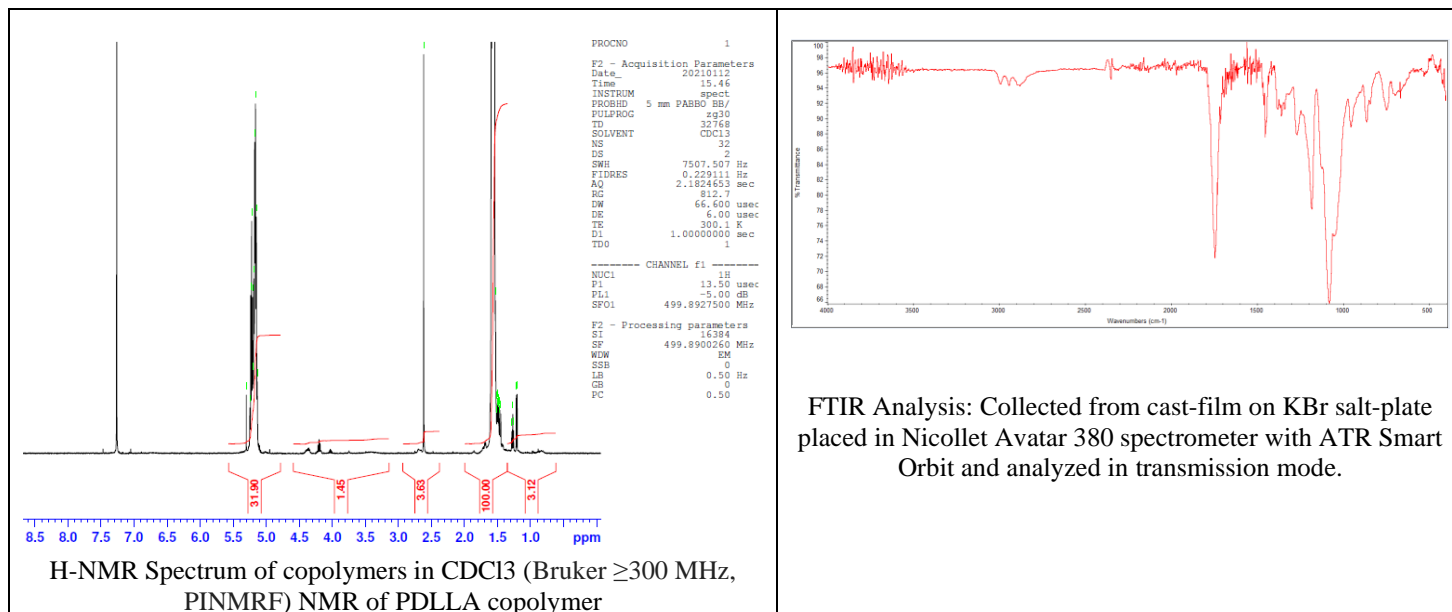
No. AV039

Certificate of Analysis

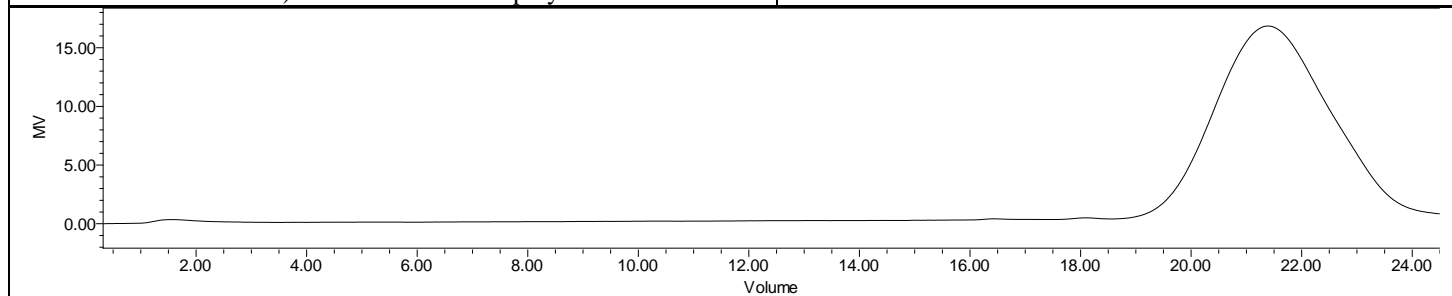


Product Name: Poly(DL-lactide) copolymer-Fluorescein endcap

(M_n 10,000-15,000 Da) (Lot#: 210106RAI-A)



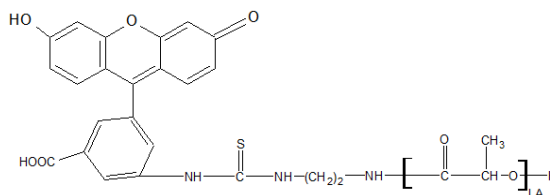
FTIR Analysis: Collected from cast-film on KBr salt-plate placed in Nicolet Avatar 380 spectrometer with ATR Smart Orbit and analyzed in transmission mode.



GPC Analysis Method: Waters Breeze 2 system with 1 ml/min THF flow across three GPC columns. Detection via refractive index, calibrated against polystyrene standards.

Polymer	M_n (from GPC)	M_w (from GPC)	PDI
PDLLA-FITC	10,176	12,647	1.24

- Structure of P(D,L)LA-Fluorescein copolymers



- Dye Content:** Testing of absorbance of polymer at 490 nm as compared to a series of FITC standards has indicated a dye content of: 17.4 $\mu\text{g}/\text{mg}$ polymer.