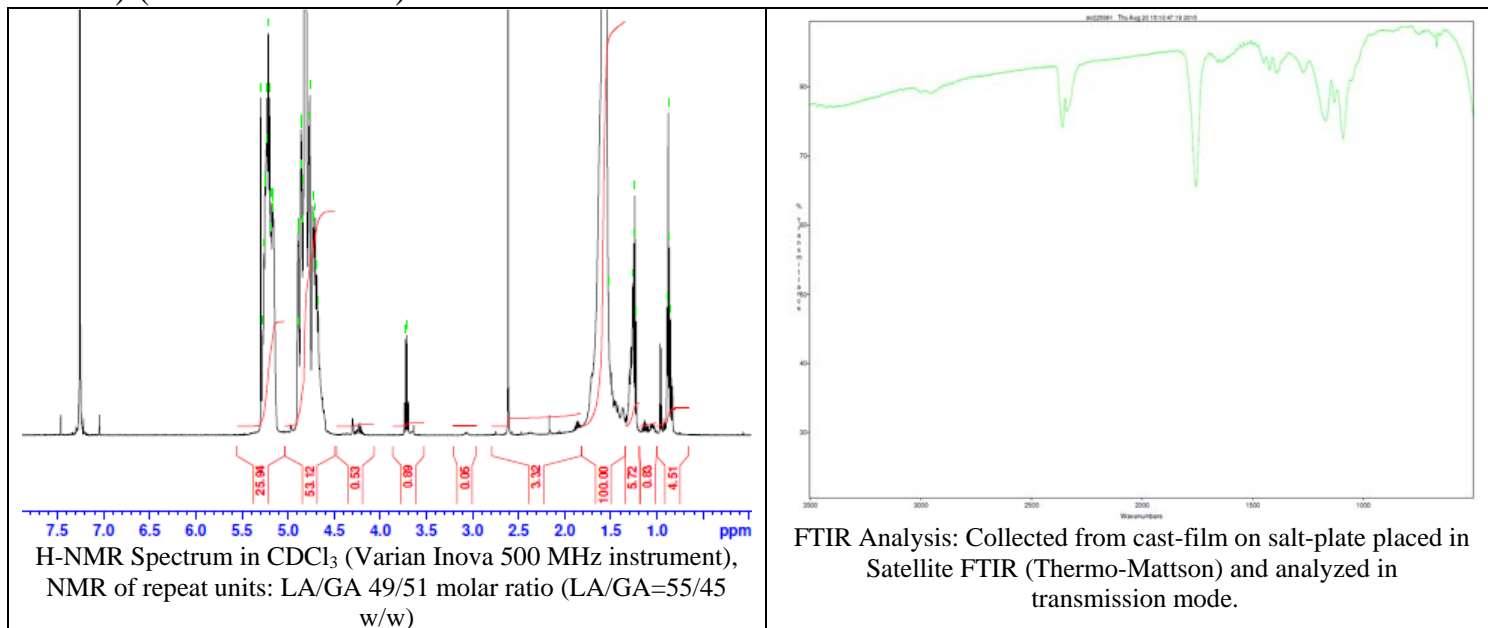


No. AV22

Certificate of Analysis

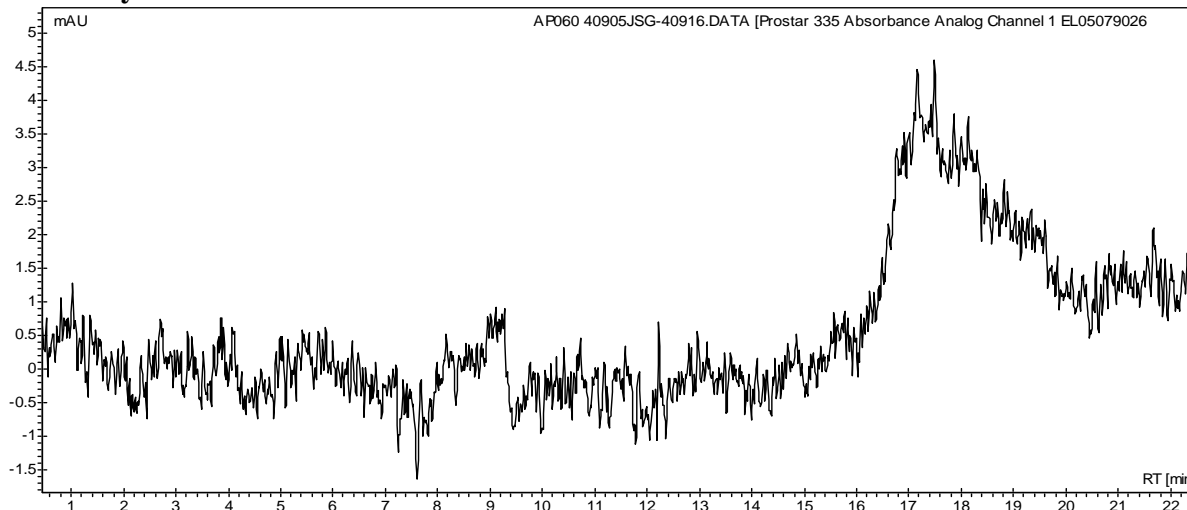


Product Name: Poly(lactide-co-glycolide)-FKB350 copolymers (Mn 45,000-55,000Da, 50:50 La:Ga) (Lot#: 50813JSG)



FKB350 manufacturer data: Max absorbance: 352 nm, Max emission: 408nm, common filter set: DAPI

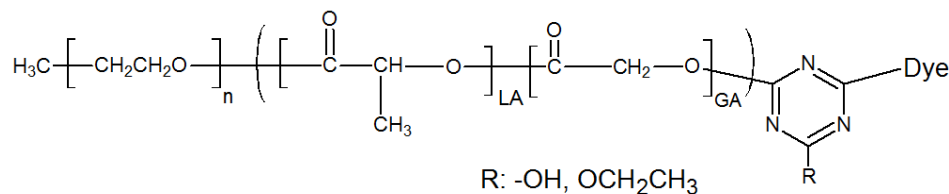
• GPC analysis



Analysis Method: Varian Prostar system with 1 ml/min DCM flow across two Phenogel 5 μ m columns and one PLgel Resipore column (Agilent). Detection via UV/Vis, calibrated against polystyrene standards.

Polymer	Mn (from GPC)	Mw (from GPC)	PDI
PLGA precursor	52,089	111,233	2.14

• Structure of PLGA-FKR560 copolymers



Material provide for research use only. Not for human use.

PolySciTech Division of Akina, Inc. | 3495 Kent Avenue, West Lafayette, IN 47906

765-464-0390 | www.polysciotech.com

For research use only.