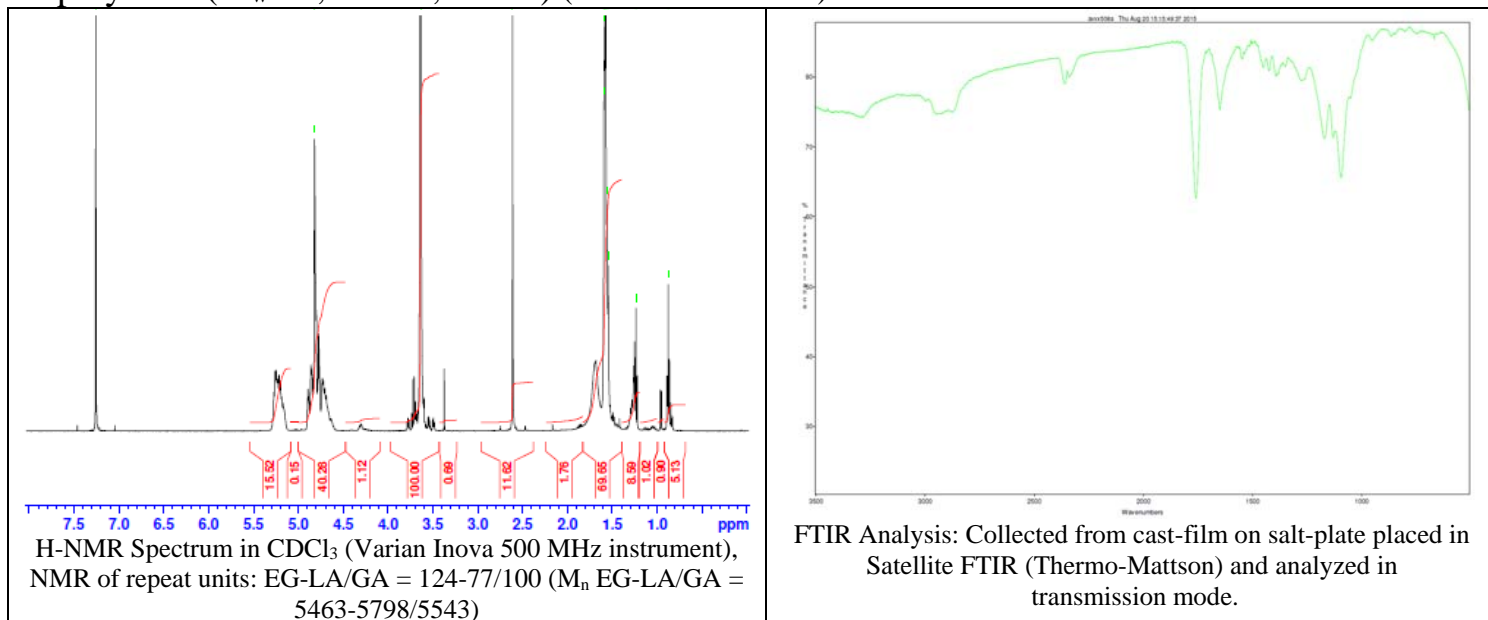


No. AV19

Certificate of Analysis

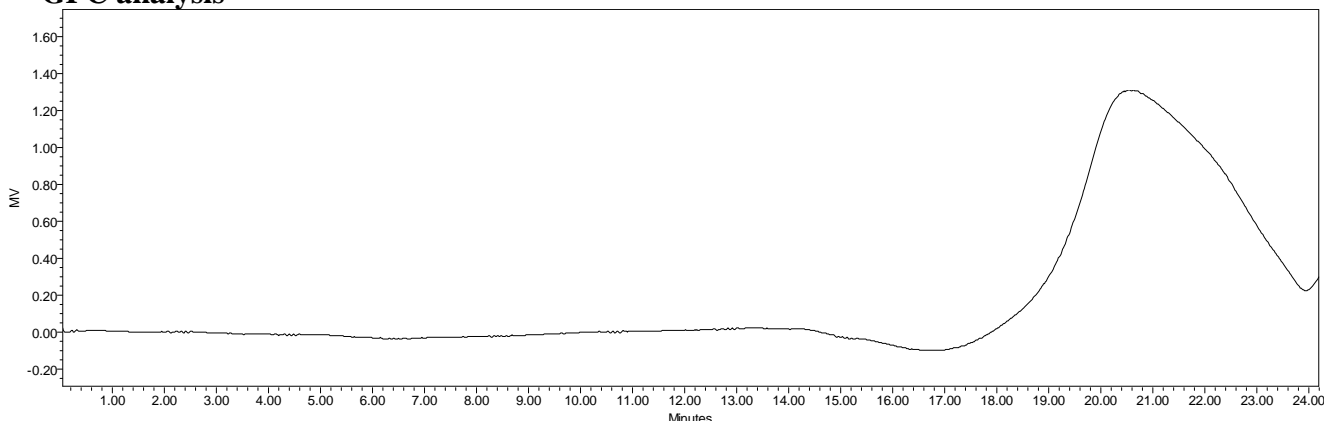


Product Name: Methoxy-Poly(ethylene glycol)-b-Poly(lactide-co-glycolide)-FKB350 copolymers ($M_w \sim 5,000-10,000\text{Da}$) (Lot#: 50811JSG-A)



FKB350 manufacturer data: Max absorbance: 352 nm, Max emission: 408nm, common filter set: DAPI

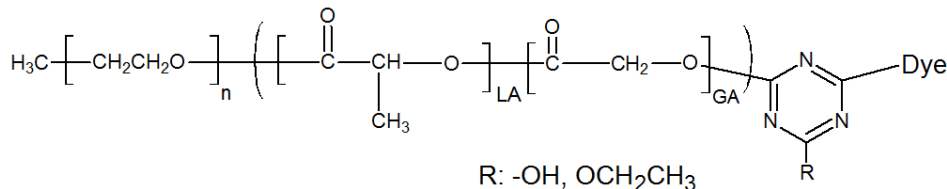
• GPC analysis



Analysis Method: Waters Breeze 2 system with 1 ml/min DCM flow across three Phenogel 5um columns (Phenomenex). Detection via refractive index, calibrated against polystyrene standards.

| Polymer | M_n (from GPC) | M_w (from GPC) | PDI |
|-------------------|------------------|------------------|------|
| mPEG-PLGA- FKB350 | 10,979 | 16,030 | 1.46 |
| mPEG | 5,488 | 5,847 | 1.06 |

• Structure of mPEG-PLGA- FKB350 copolymers



Material provide for research use only. Not for human use.

PolySciTech Division of Akina, Inc. | 3495 Kent Avenue, West Lafayette, IN 47906

765-464-0390 | www.polysciotech.com

For research use only.