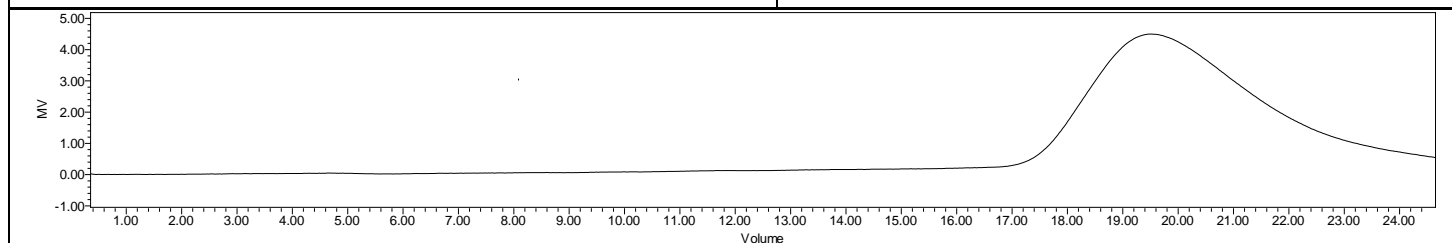
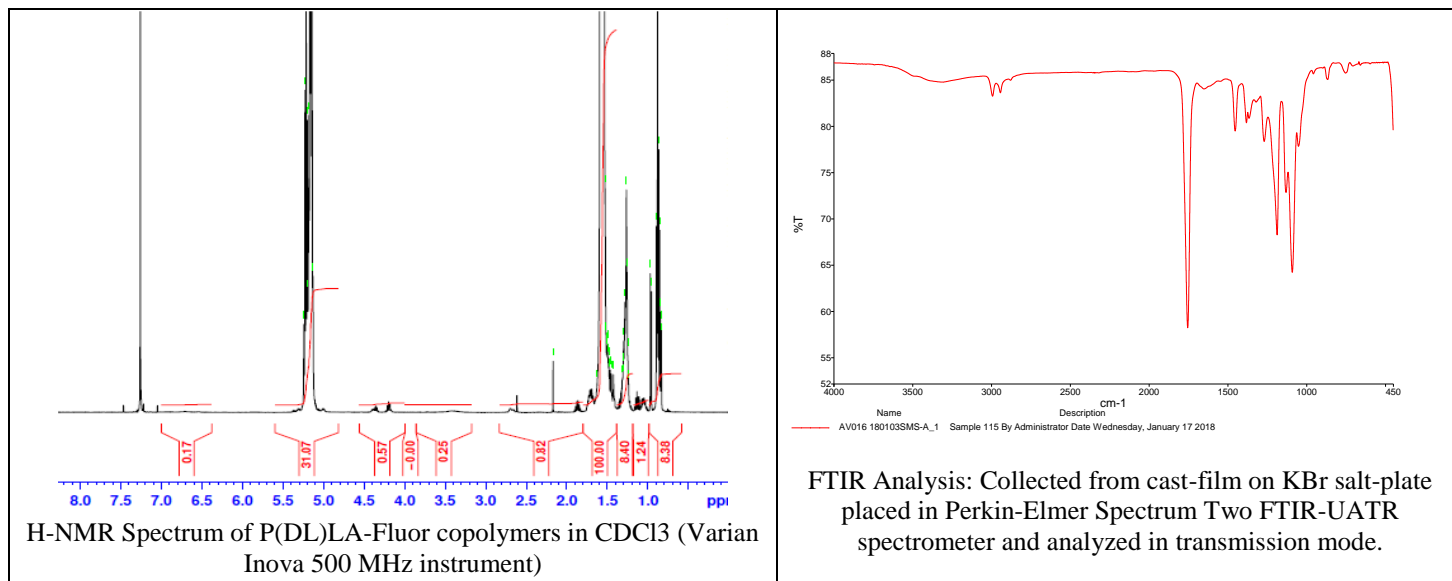


# No. AV016

# Certificate of Analysis



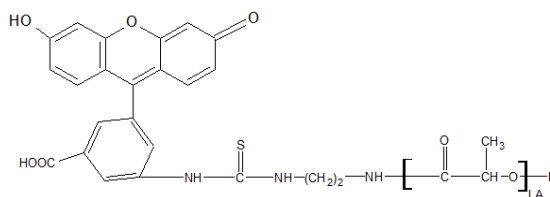
Product Name: Poly(DL-lactide) copolymer-Fluorescein endcap  
( $M_n$  20,000 - 40,000Da) (Lot#: 180103SMS-A)



GPC Analysis Method: Waters Breeze 2 system with 1 ml/min THF flow across three GPC columns. Detection via refractive index, calibrated against polystyrene standards.

Polymer	$M_n$ (from GPC)	$M_w$ (from GPC)	PDI
P(D,L)LA-Fluor	20,297	28,813	1.42

## • Structure of P(D,L)LA-Fluor copolymers



- **Dye Content:** Testing of absorbance of polymer at 490nm as compared to a series of FTIC standards has indicated a dye content of: 60.3  $\mu\text{g}/\text{mg}$  polymer.