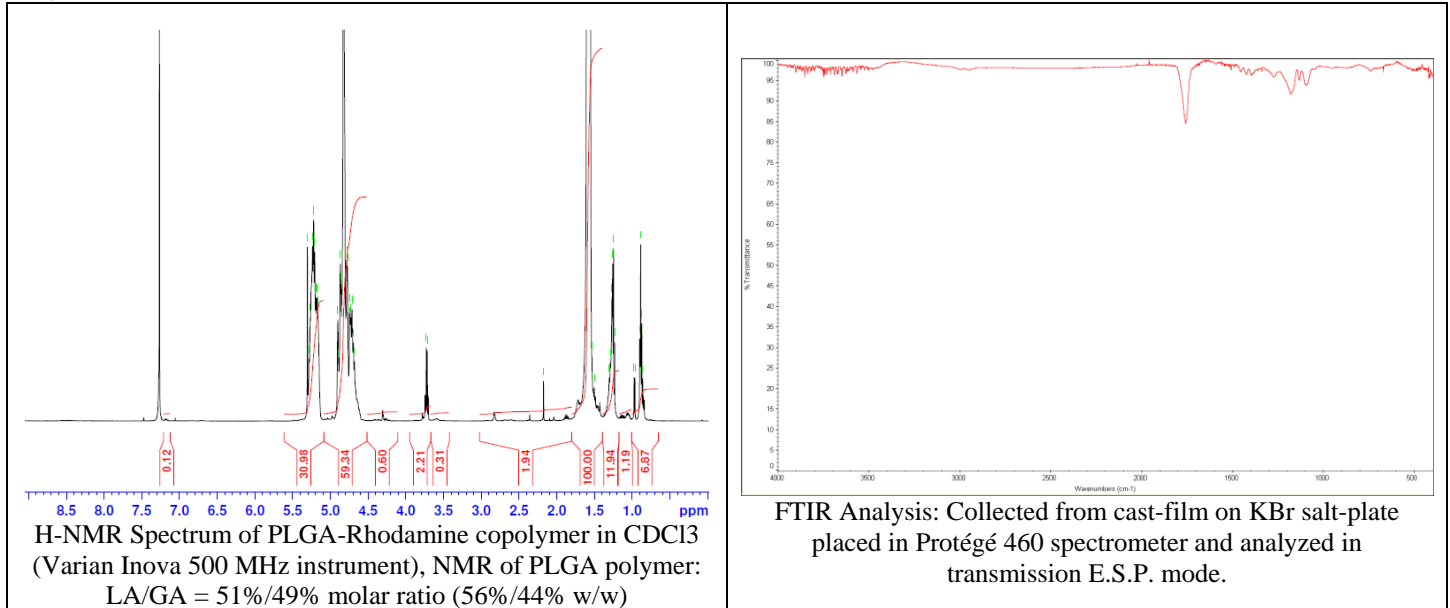


No. AV011

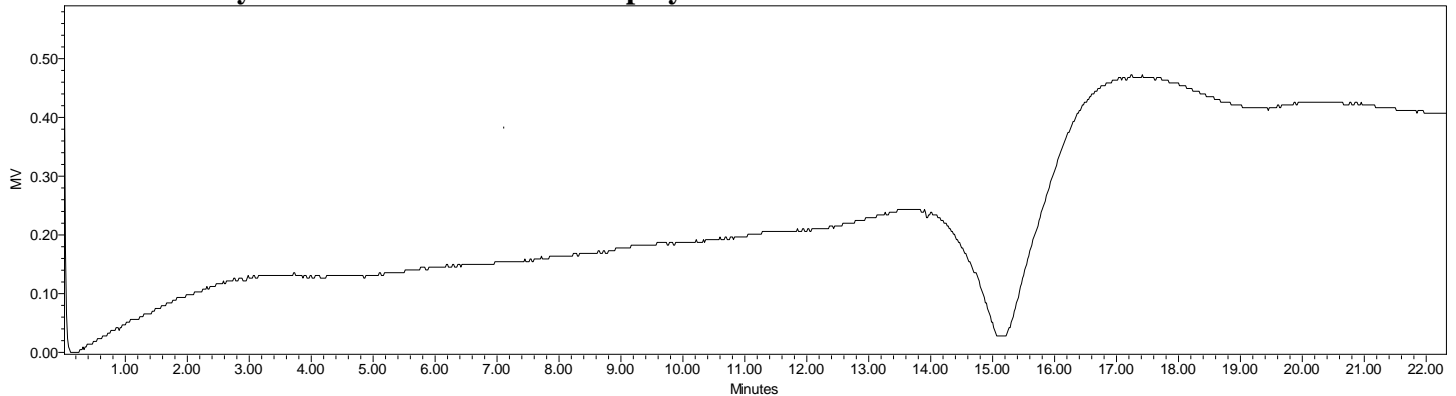
Certificate of Analysis



Product Name: Poly(lactic-co-glycolic acid) copolymer-Rhodamine-B conjugate ($M_w \sim 30,000$ Da) (Lot#: 61007SJH-A)



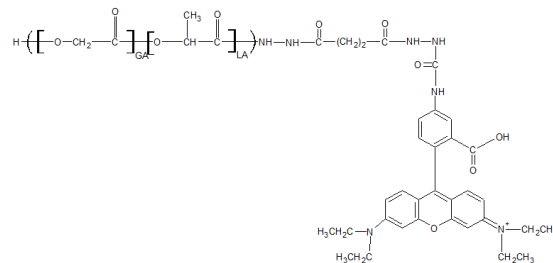
• GPC analysis of PLGA-Rhodamine copolymers



Analysis Method: Waters Breeze 2 system with 1 ml/min DCM flow across three GPC columns (7.8 x 300 mm, mixed porosities). Detection via refractive index, calibrated against polystyrene standards.

Polymer	Mn (from GPC)	Mw (from GPC)	PDI
PLGA-Rhodamine	28,570	41,687	1.46

• Structure of PLGA-Rhodamine B copolymers



Dye Content: Testing of absorbance of polymer in DCM solution at 543 nm as compared to series of RITC standards has indicated a dye content of: 5.9 $\mu\text{g}/\text{mg}$ polymer.

Material provided for research use only. Not for human use.

PolySciTech Division of Akina, Inc. | 3495 Kent Avenue, West Lafayette, IN 47906

765-464-0390 | www.polysciotech.com

For research use only.