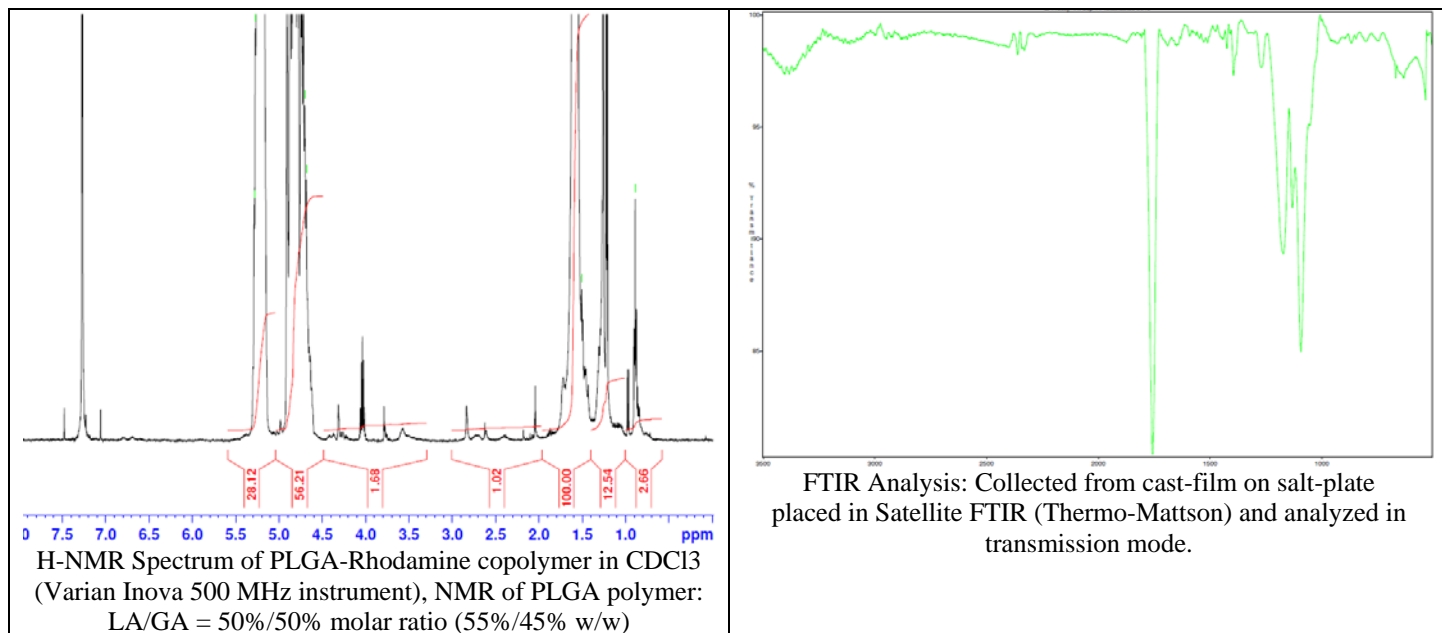


# No. AV11

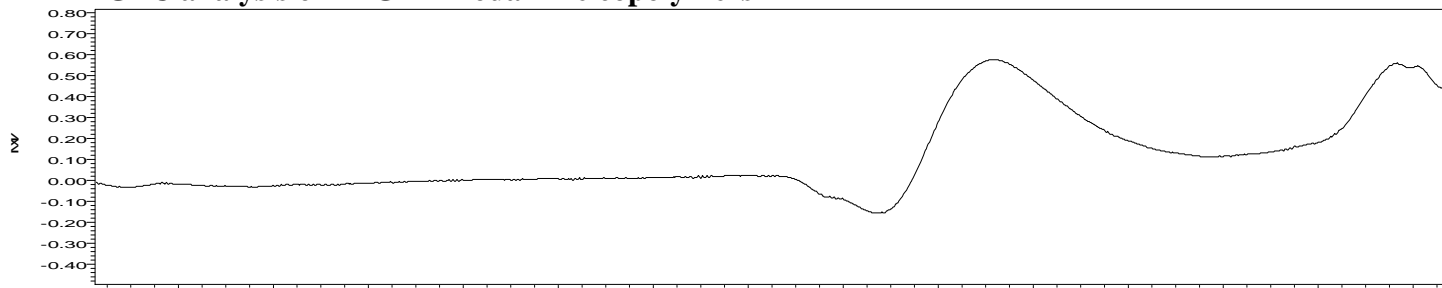
# Certificate of Analysis



Product Name: Poly(lactic-co-glycolic acid) copolymer-Rhodamine-B conjugate ( $M_w \sim 30,000$  Da) (Lot#: 50902JSG)



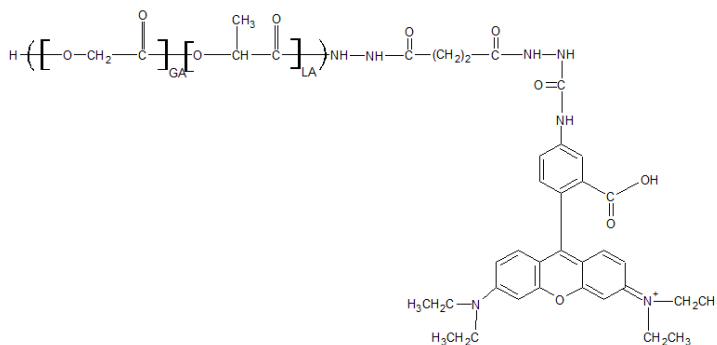
## • GPC analysis of PLGA-Rhodamine copolymers



Analysis Method: Waters Breeze 2 system with 1 ml/min DCM flow across two Phenogel 5 $\mu$ m columns and one Resipore column (Agilent). Detection via UV/Vis, calibrated against polystyrene standards.

Polymer	Mn (from GPC)	Mw (from GPC)	PDI
PLGA-Rhodamine	28753	42763	1.49

## • Structure of PLGA-Rhodamine B copolymers



**Dye Content:** Testing of absorbance of polymer in DMSO solution at 555 nm as compared to series of Rhodamine-B isothiocyanate standards has indicated a dye content of: 28.4  $\mu$ g/mg polymer.

Material provided for research use only. Not for human use.

PolySciTech Division of Akina, Inc. | 3495 Kent Avenue, West Lafayette, IN 47906

765-464-0390 | www.polysciotech.com

For research use only.