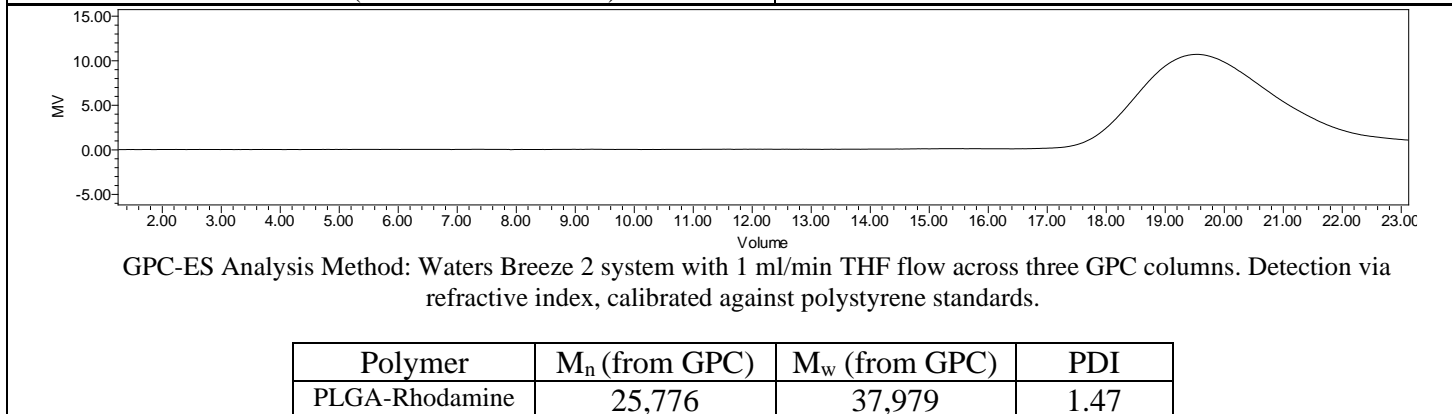
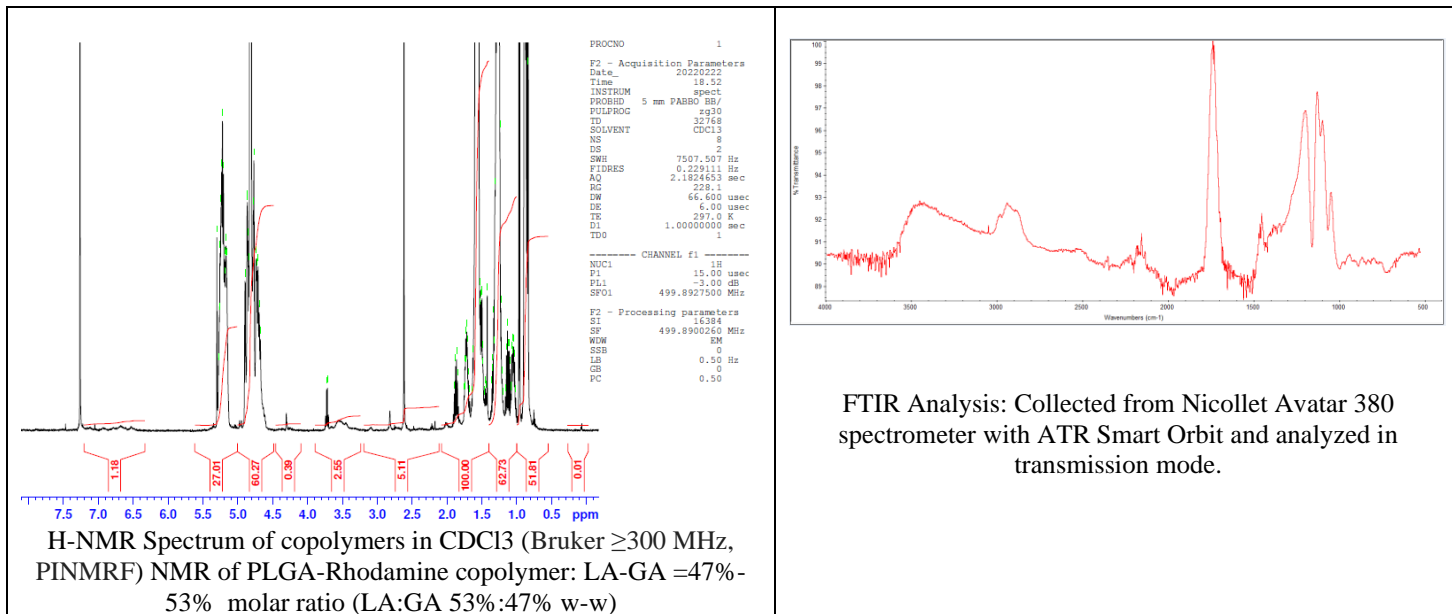


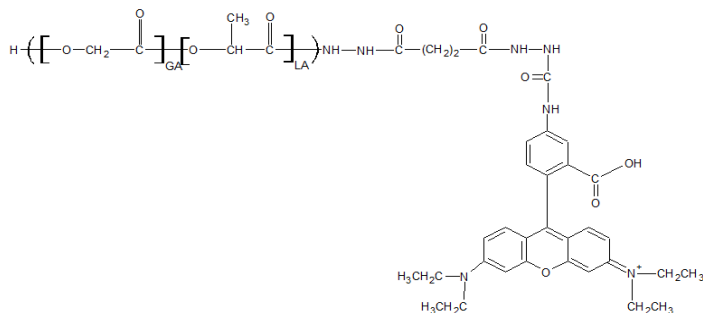
No. AV011

# Certificate of Analysis

Product Name: Poly(lactic-co-glycolic acid) copolymer-Rhodamine-B conjugate (M<sub>n</sub> 10,000 - 30,000 Da) (Lot#: 220211RAI-B)



- **Structure of PLGA-Rhodamine B copolymers**



**Dye Content:** Testing of absorbance of polymer in DCM solution at 543 nm as compared to series of Rhodamine-B isothiocyanate standards has indicated a dye content of: 23.7  $\mu\text{g}/\text{mg}$  polymer.