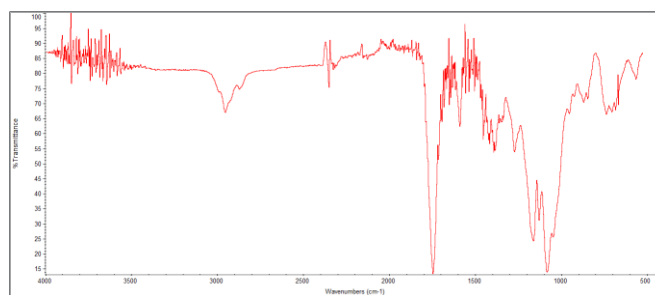
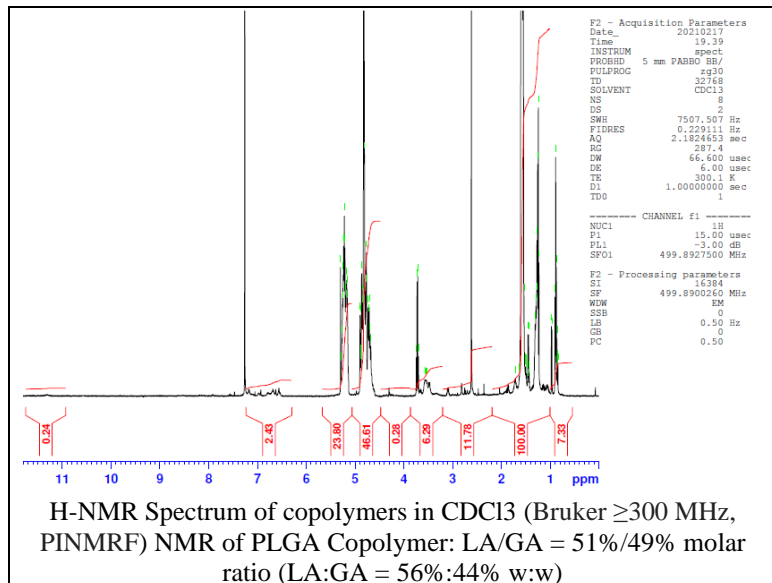


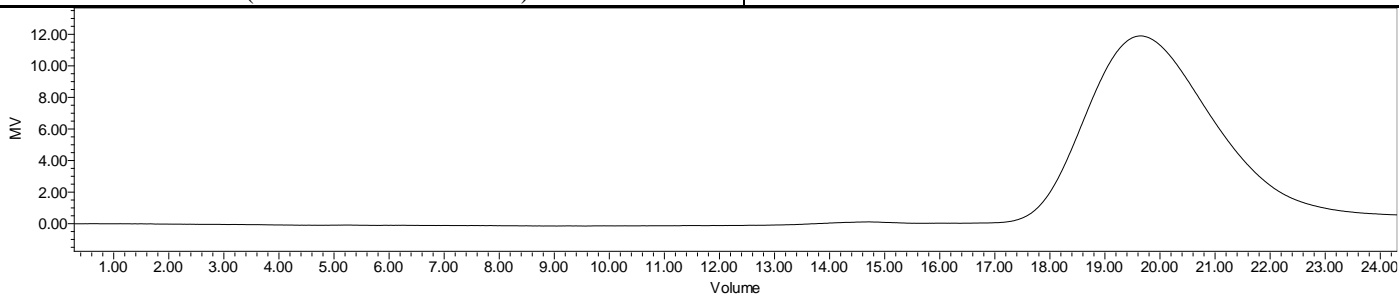
No. AV011

Certificate of Analysis

Product Name: Poly(lactic-co-glycolic acid) copolymer-Rhodamine-B conjugate (M_n 10,000 - 30,000 Da) (Lot#: 210205RAI-A)



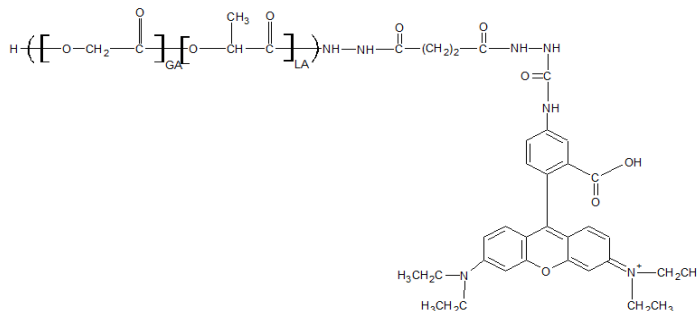
FTIR Analysis: Collected from Nicolet Avatar 380 spectrometer with ATR Smart Orbit and analyzed in transmission mode.



GPC-ES Analysis Method: Waters Breeze 2 system with 1 ml/min THF flow across three GPC columns. Detection via refractive index, calibrated against polystyrene standards.

Polymer	M _n (from GPC)	M _w (from GPC)	PDI
PLGA-Rhodamine B	24,514	35,804	1.46

- **Structure of PLGA-Rhodamine B copolymers**



Dye Content: Testing of absorbance of polymer in DCM solution at 543 nm as compared to series of Rhodamine-B isothiocyanate standards has indicated a dye content of: 26.34 $\mu\text{g}/\text{mg}$ polymer.