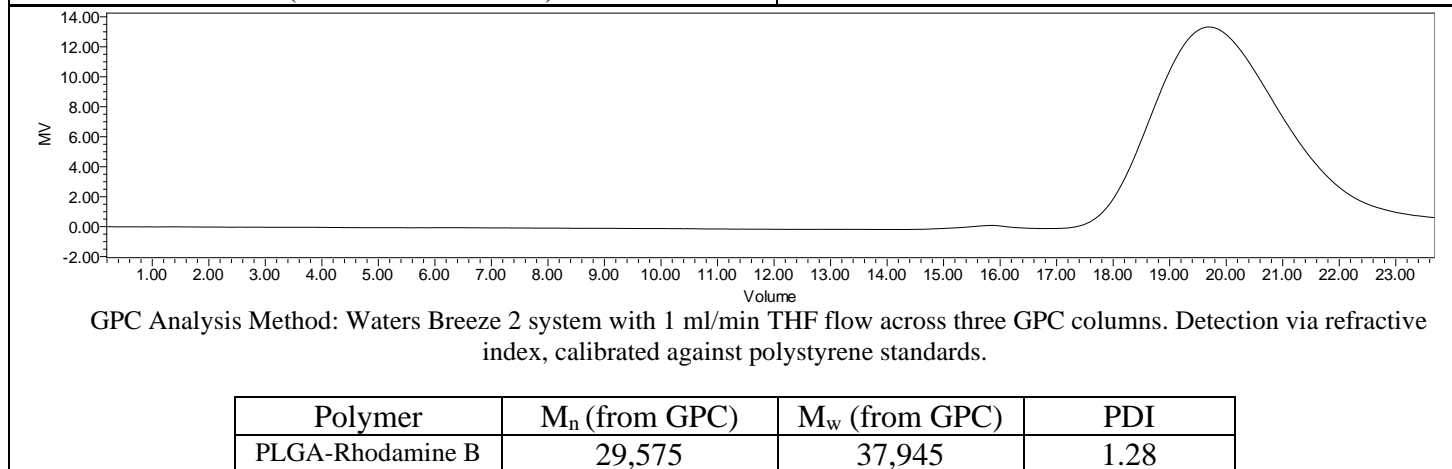
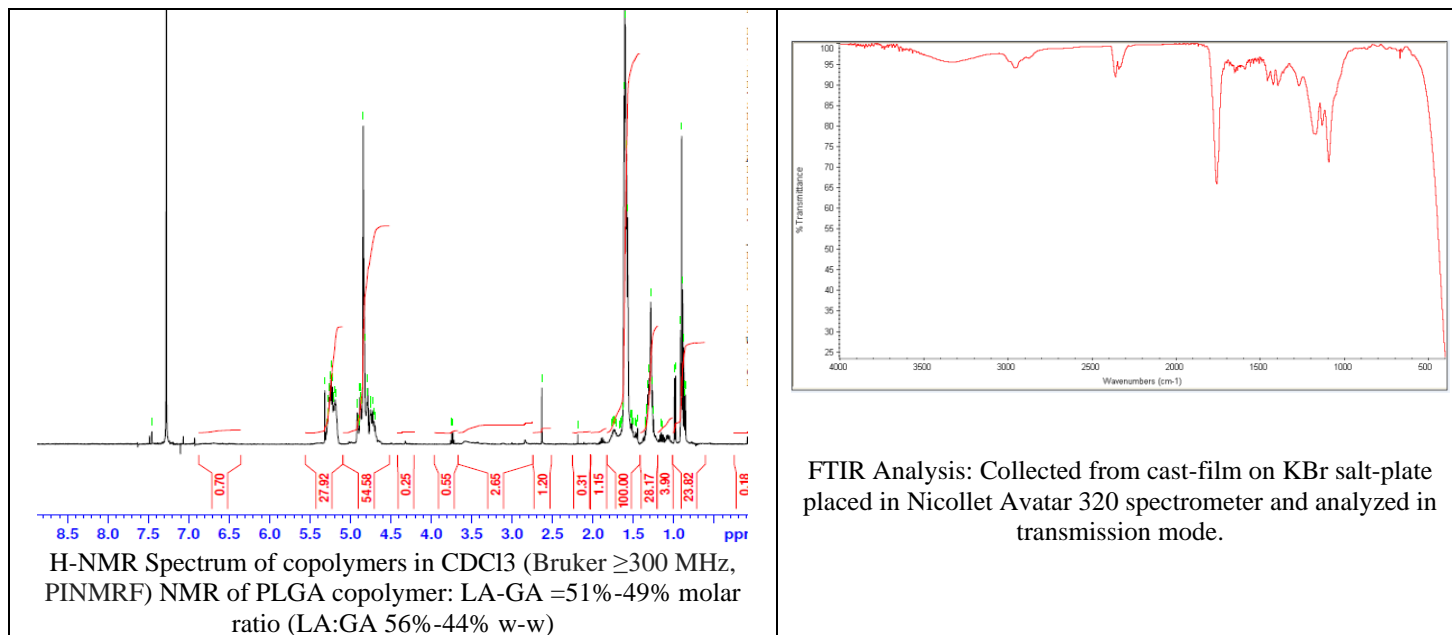


# No. AV011

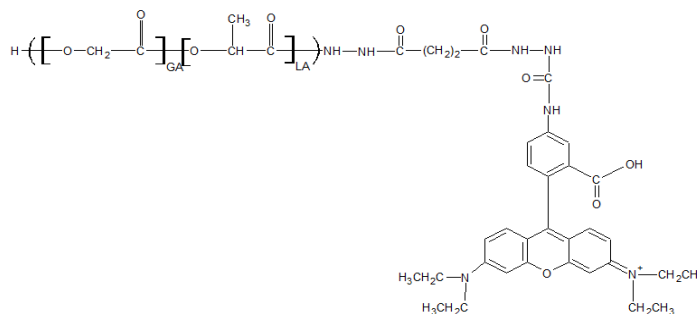
# Certificate of Analysis



Product Name: Poly(lactic-co-glycolic acid) copolymer-Rhodamine-B conjugate ( $M_n$  10,000 - 30,000 Da) (Lot#: 191127RAI-A)



## Structure of PLGA-Rhodamine B copolymers



**Dye Content:** Testing of absorbance of polymer in DCM solution at 543 nm as compared to series of Rhodamine-B isothiocyanate standards has indicated a dye content of: 28.80  $\mu\text{g}/\text{mg}$  polymer.