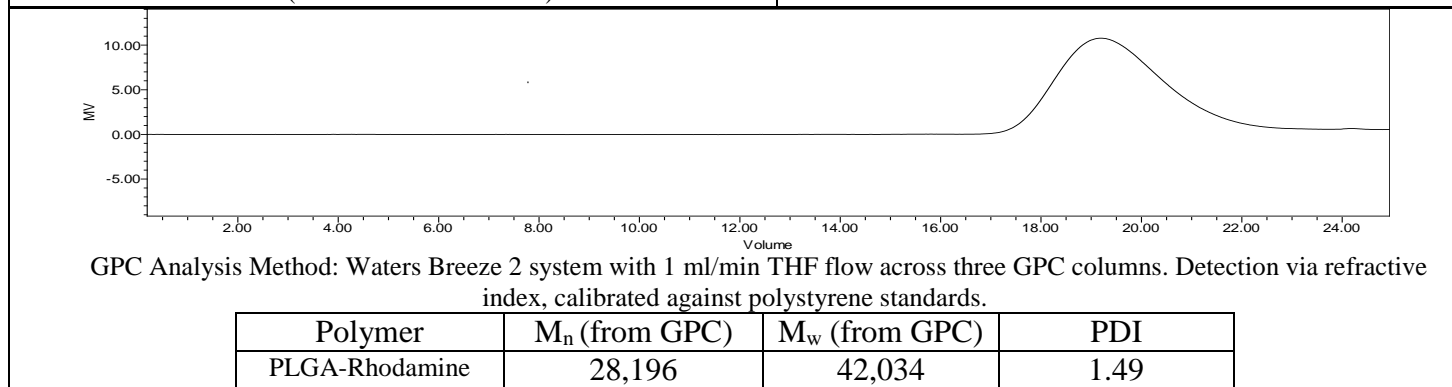
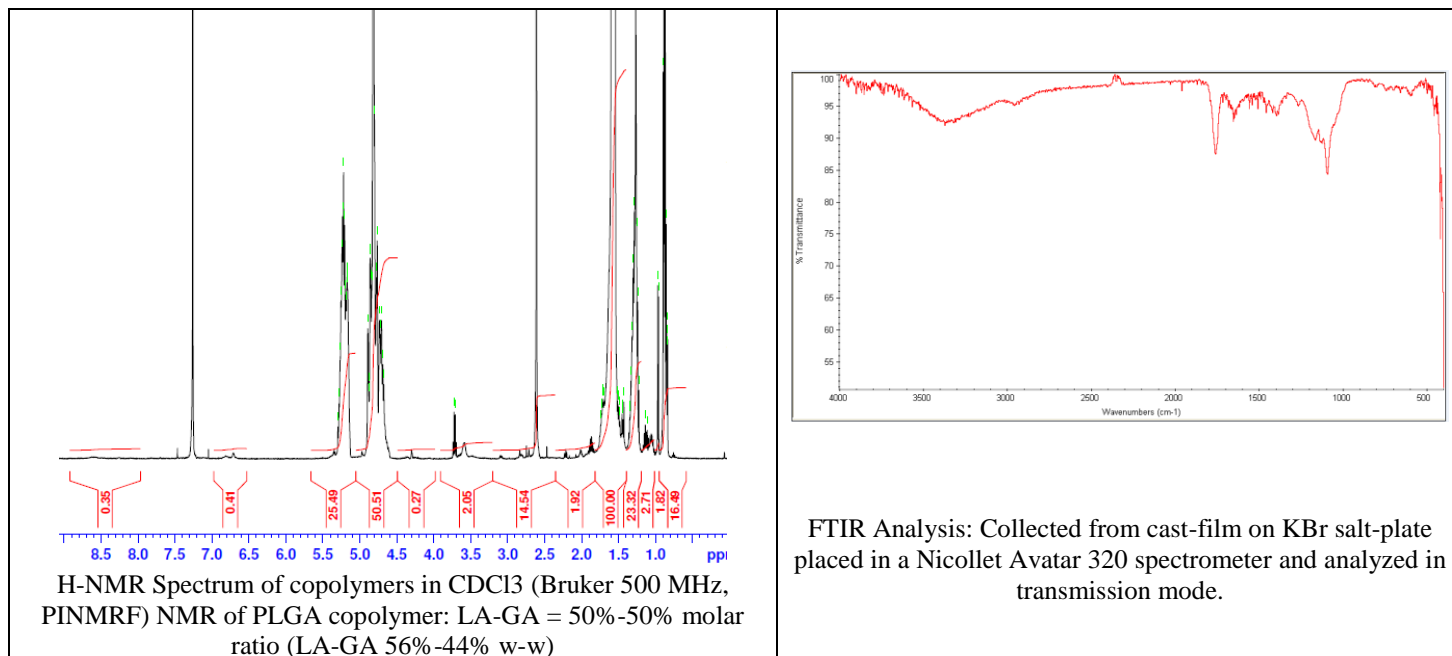


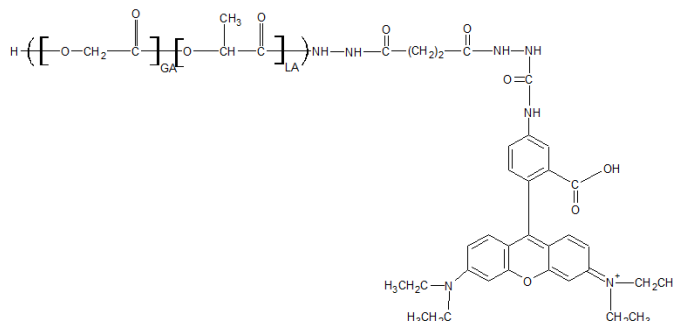
# AV011

# Certificate of Analysis

Product Name: Poly(lactide-co-glycolide)-Rhodamine B endcap LG 50:50  
(Mn 10,000-30,000 Da) Lot# 190523RAI-B



- **Structure of PLGA-Rhodamine B copolymer**



**Dye Content:** Testing of absorbance of polymer in DCM solution at 543 nm as compared to series of RITC standards has indicated a dye content of: 9.09  $\mu\text{g}/\text{mg}$  polymer.