

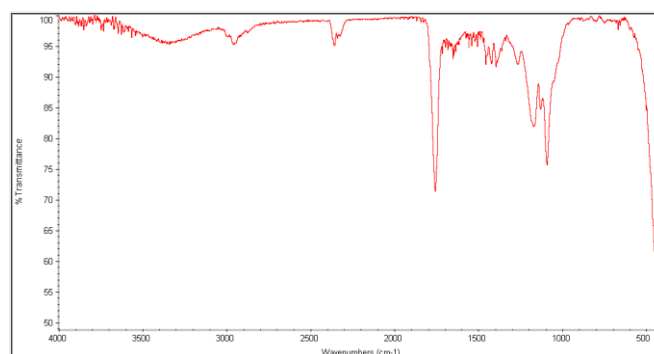
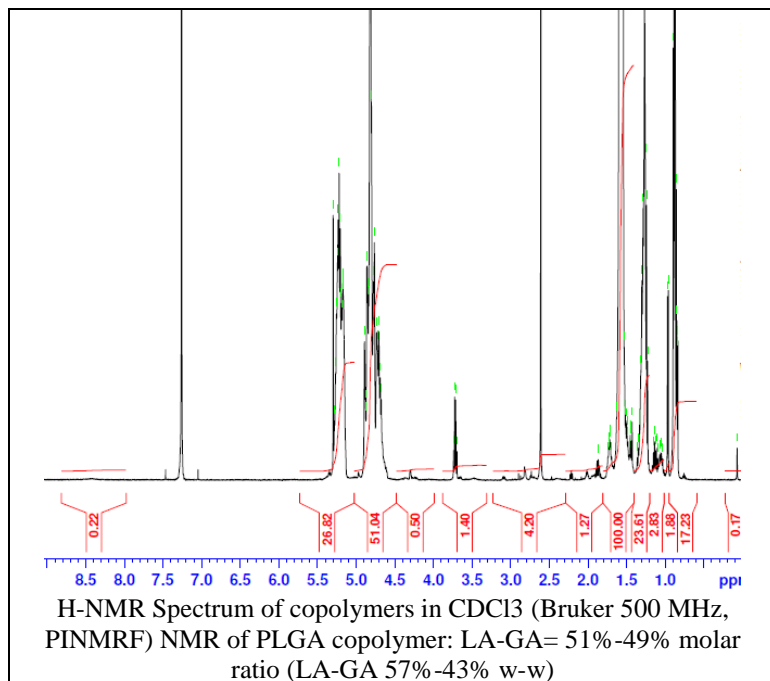
AV006

Certificate of Analysis

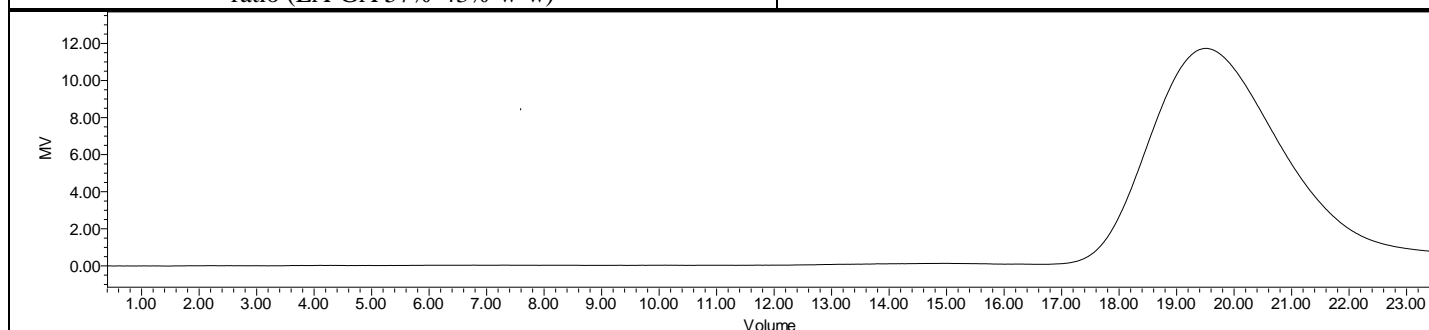


Product Name: Poly(lactide-co-glycolide) LG 50:50

FPI749 endcap (Mn ~20,000-30,000 Da) Lot# 190523RAI-A



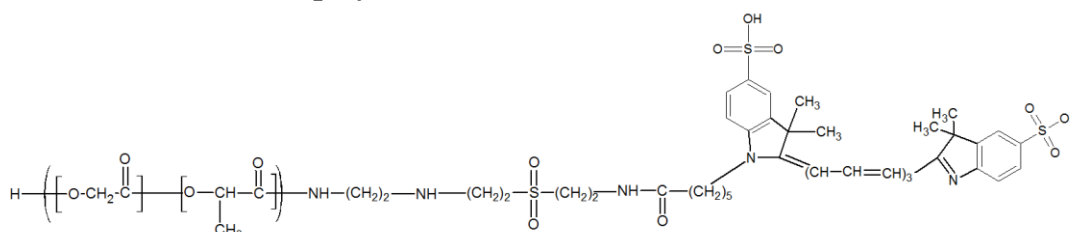
FTIR Analysis: Collected from cast-film on KBr salt-plate placed in a Nicolet Avatar 320 spectrometer and analyzed in transmission mode.



GPC Analysis Method: Waters Breeze 2 system with 1 ml/min THF flow across three GPC columns. Detection via refractive index, calibrated against polystyrene standards.

Polymer	M _n (from GPC)	M _w (from GPC)	PDI
PLGA-FPI749	22,286	35,374	1.59

- Structure of PLGA-FPR749 copolymers**



Dye Content: Testing of absorbance of polymer in DCM solution at 770 nm as compared to series of standards has indicated a dye content of: 1.80 µg/mg polymer.