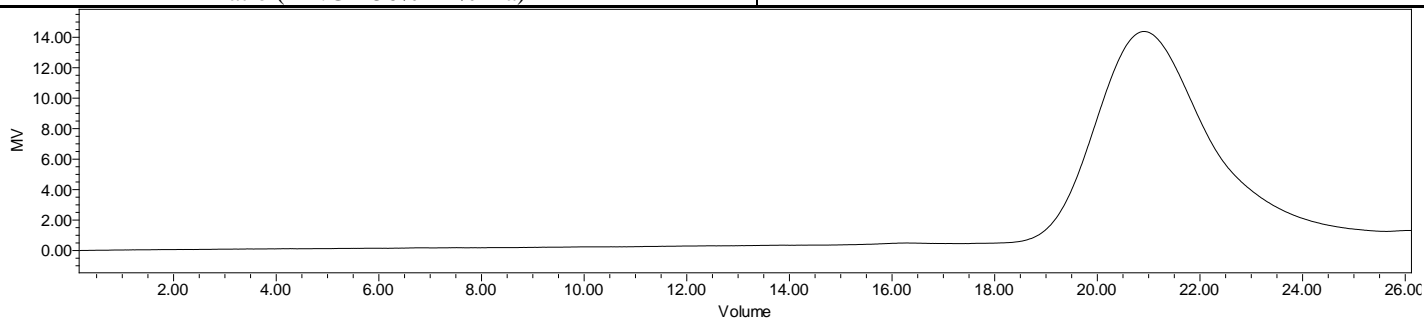
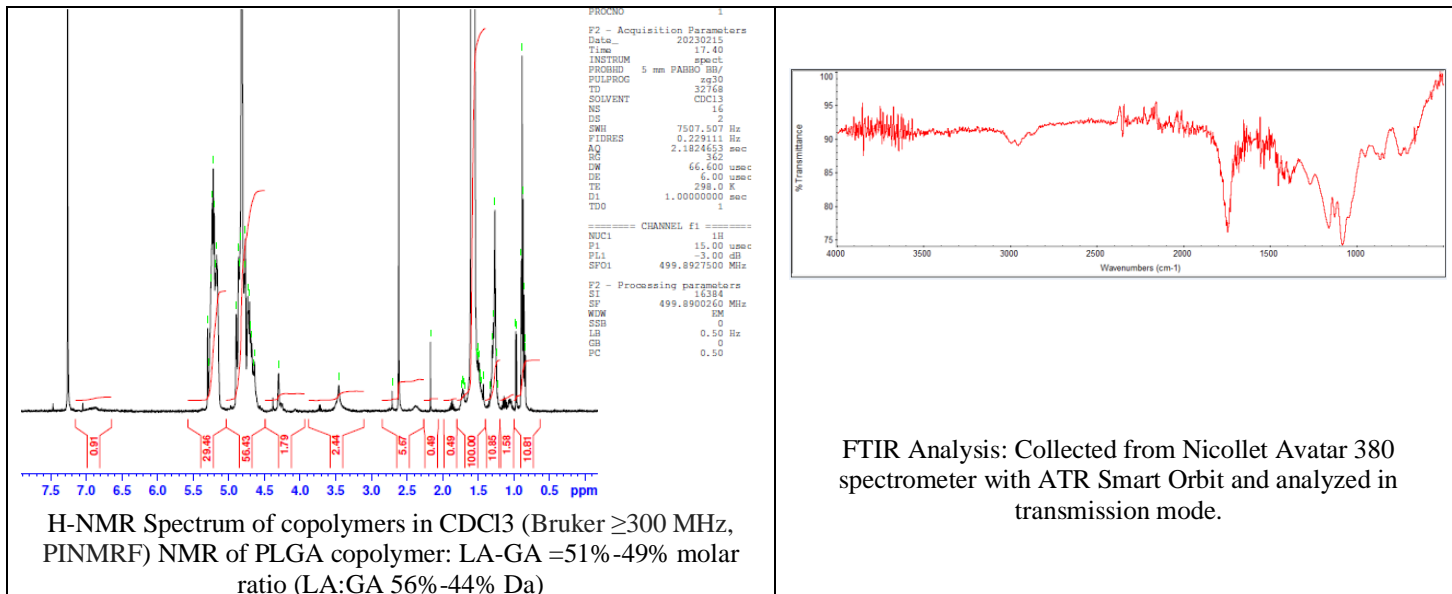


No. AV002

Certificate of Analysis

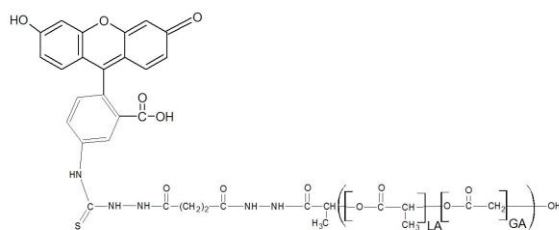
Product Name: Poly(lactic-co-glycolic) copolymer-Fluorescein (50:50 LA:GA, Mn 10,000 - 20,000Da) (Lot# 230209RAI-A)



GPC-ES Analysis Method: Waters Breeze 2 system with 1 ml/min THF flow across three GPC columns. Detection via refractive index, calibrated against polystyrene standards.

Polymer	M _n (from GPC)	M _w (from GPC)	PDI
PLGA	10,389	14,602	1.41

- **Structure of PLGA-Fluorescein copolymers**



Dye Content: Testing of absorbance of polymer in DCM solution at 490 nm as compared to series of FITC standards has indicated a dye content of 11.75 $\mu\text{g}/\text{mg}$ polymer