

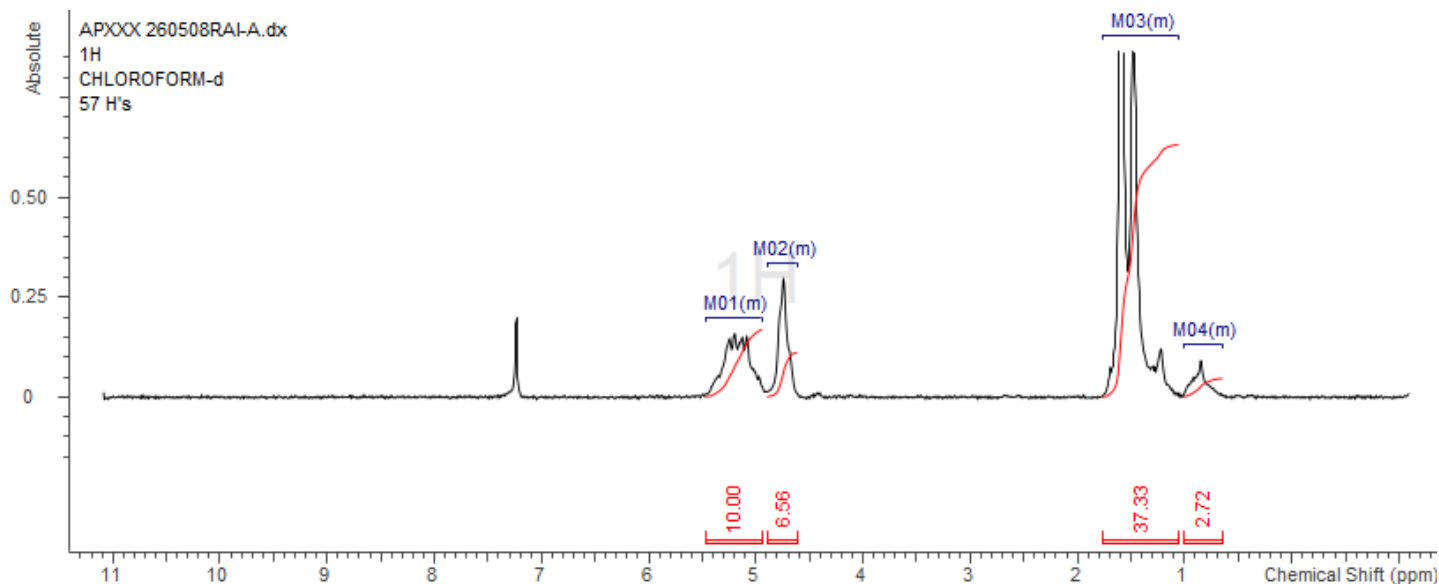
No. AP328

Certificate of Analysis



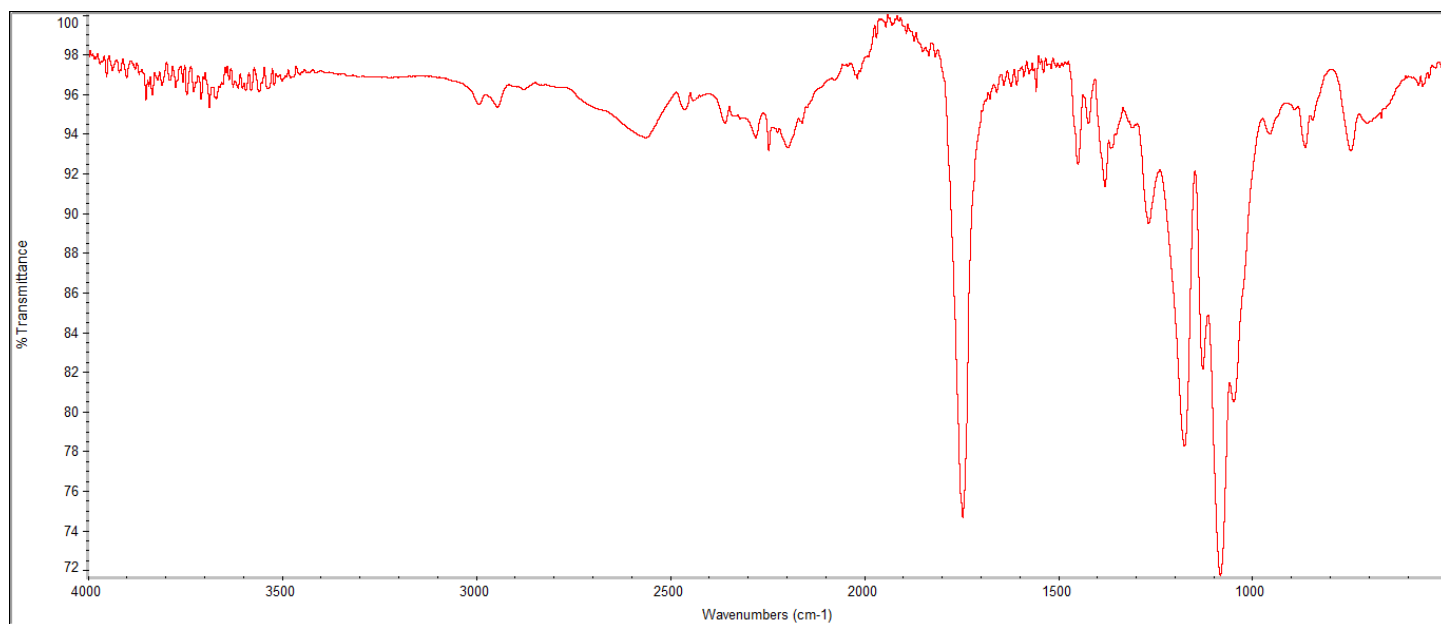
Product Name: Poly(lactide-co-glycolide) ester endcap (75:25 LA:GA,
 M_n : 10,000-15,000 Da) (Lot#: 260508RAI-A)

H-NMR



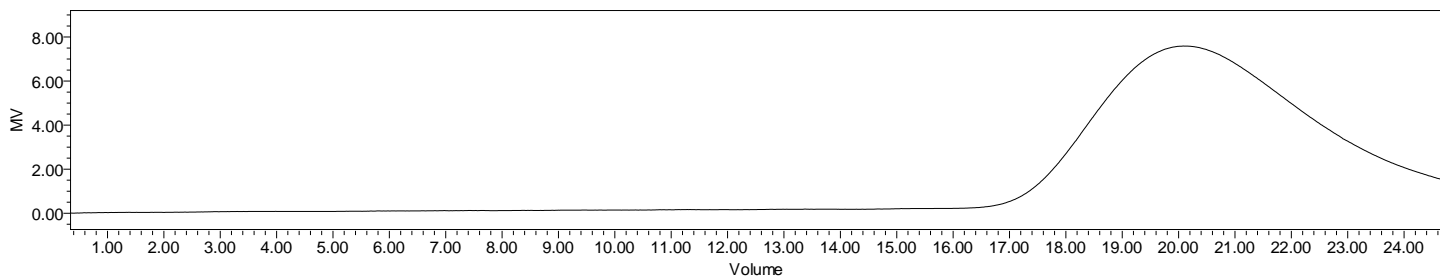
H-NMR Spectrum of copolymers in CDCl₃ (NMReady-60e, Nanalysis 60 MHz) NMR of PLGA copolymer: LA-GA =75%-25% molar ratio (LA:GA 79%:21% w:w)

FTIR



FTIR Analysis: Collected from IS5 ID7-ATR spectrometer (Thermo Scientific) and analyzed in transmission mode.

GPC-ES



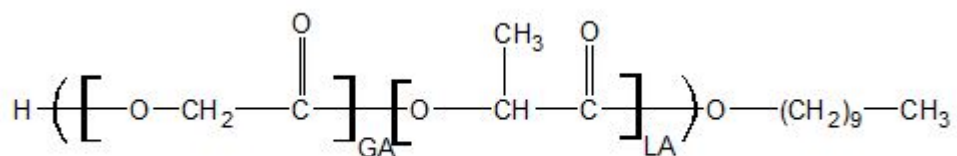
Polymer	M _n (from GPC)	M _w (from GPC)	PDI
PLGA	14,769	21,966	1.48

GPC-ES Analysis Method: Waters Breeze 2 system with 1 ml/min THF flow across three GPC columns. Detection via refractive index, calibrated against polystyrene standards.

IV

Inherent Viscosity: 0.115 ± 0.007 dL/g (calculated from kinematic viscosity at 2% w/v Acetone on Rheosense microVISC, n=3) at 25°C.

Structure of copolymers



Approved By:
Amie Tyler
Quality Manager