

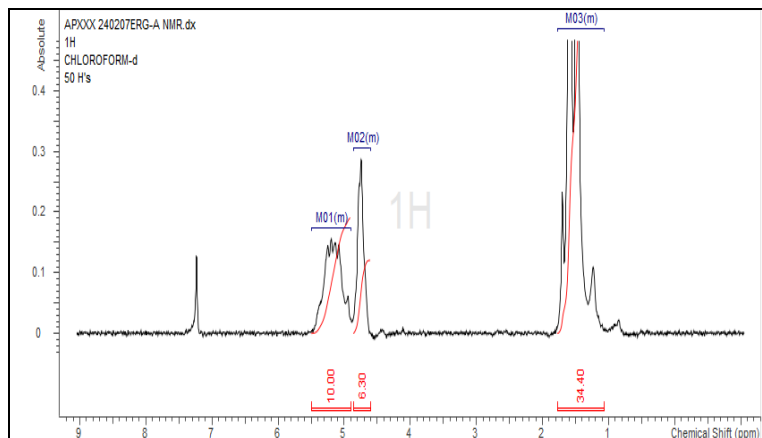
No. AP312

Certificate of Analysis

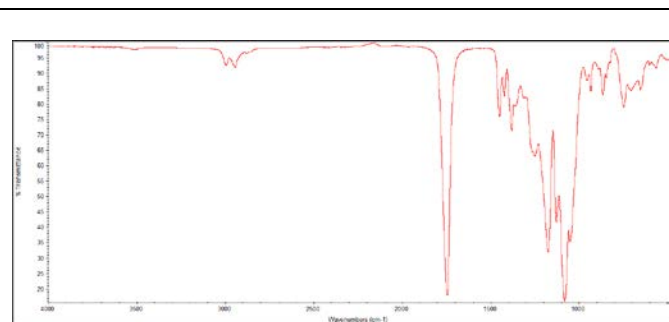


Product Name: Poly(lactide-co-glycolide) ester endcap (75:25 LA:GA,

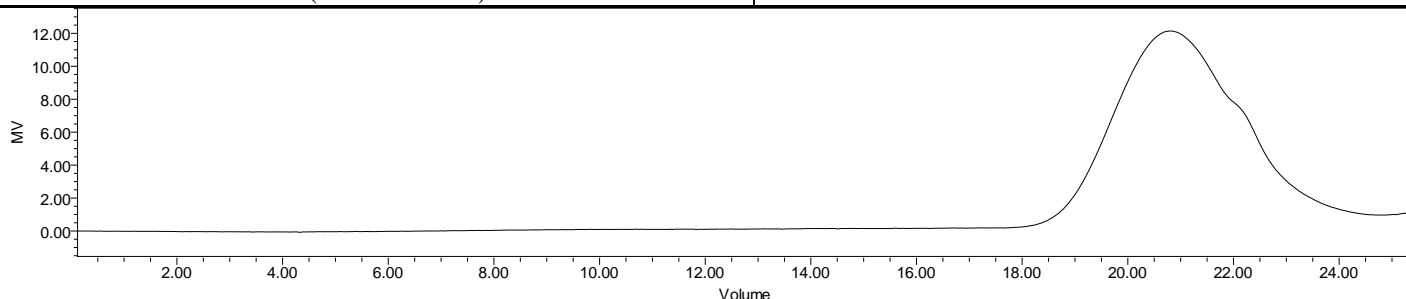
M_n : 5,000-10,000 Da) (Lot#: 240207ERG-A)



H-NMR Spectrum of copolymers in $CDCl_3$ (NMReady-60e, Nanalysis 60 MHz) NMR of PLGA Copolymer: 76%-24% molar ratio (80%-20% w-w)



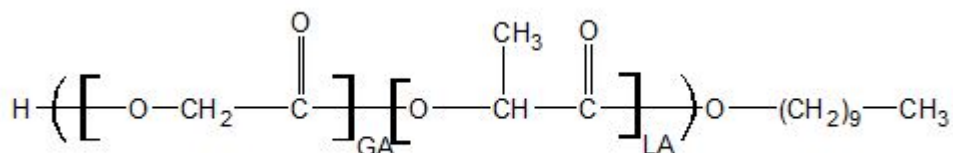
FTIR Analysis: Collected from Nicolet Avatar 380 spectrometer with ATR Smart Orbit and analyzed in transmission mode.



GPC-ES Analysis Method: Waters Breeze 2 system with 1 ml/min THF flow across three GPC columns. Detection via refractive index, calibrated against polystyrene standards.

Polymer	M_n (from GPC)	M_w (from GPC)	PDI
PLGA	8927	15,741	1.76

• Structure of PLGA copolymers



Approved By:
Amie Tyler
Quality Manager