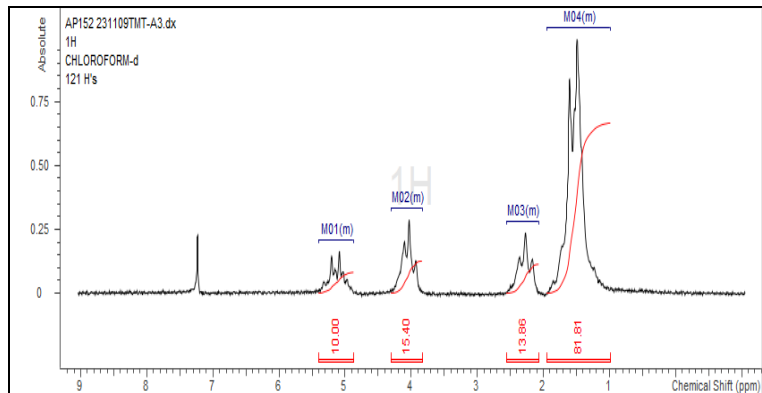


No. AP310

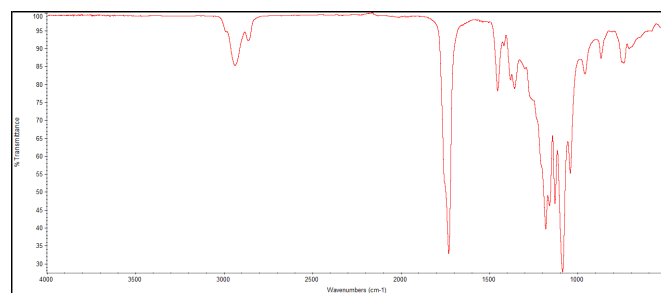
Certificate of Analysis



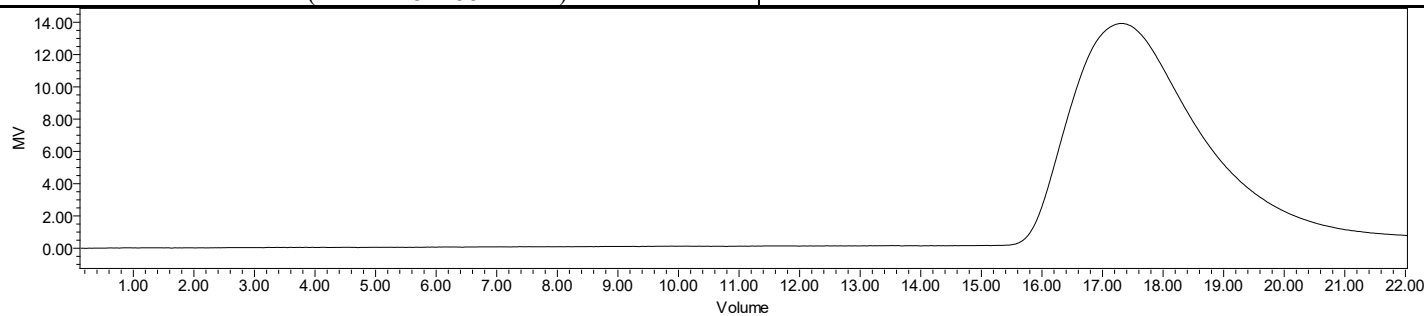
Product Name: Poly(L-lactide-co-caprolactone) copolymer ester endcap
(60:40 LA:CL, M_n : 85,000-100,000 Da) (Lot#: 231109TMT-A)



H-NMR Spectrum of copolymers in CDCl₃ (NMRReady-60e, NAnalysis 60 MHz) NMR of P(L)LCL Copolymer LA:CL 56%:44% molar ratio (LA:CL 45%:55% w-w)



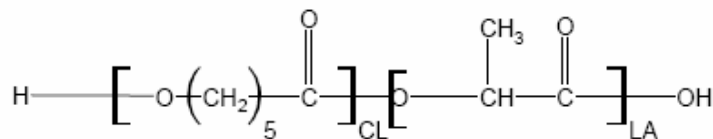
FTIR Analysis: Collected from IS5 ID7-ATR spectrometer (ThermoFisher) and analyzed in transmission mode.



GPC-ES Analysis Method: Waters Breeze 2 system with 1 ml/min THF flow across three GPC columns. Detection via refractive index, calibrated against polystyrene standards.

Polymer	M_n (from GPC)	M_w (from GPC)	PDI
P(L)LCL	88,438	154,022	1.78

• Structure of P(L)LCL copolymers



Approved By:
Amie Tyler
Quality Manager