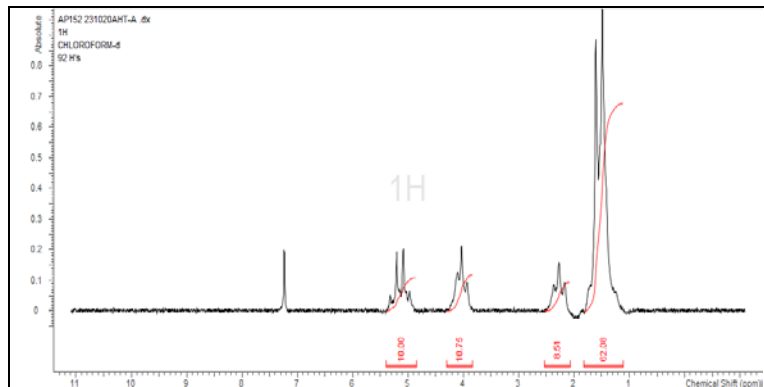


No. AP309

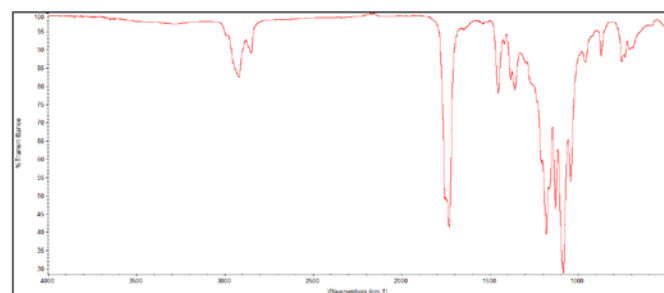
Certificate of Analysis



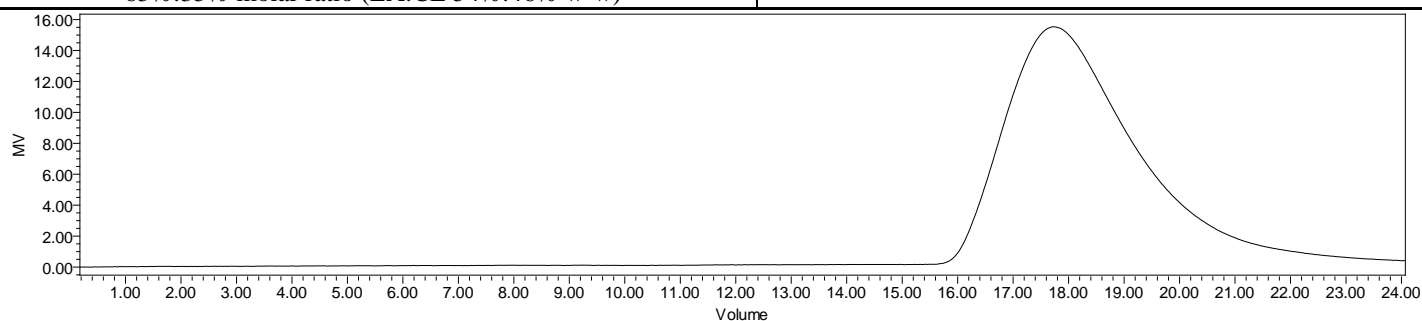
Product Name: Poly(L-lactide-co-caprolactone) copolymer ester endcap
(65:35 LA:CL, M_n : 55,000-65,000 Da) (Lot#: 231020AHT-A)



^1H -NMR Spectrum of copolymers in CDCl_3 (NMReady-60e, Nanalysis 60 MHz) NMR of P(L)LCL Copolymer: LA:CL 65%:35% molar ratio (LA:CL 54%:46% w-w)



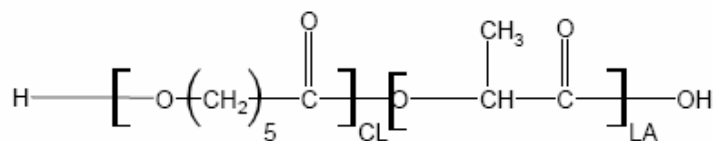
FTIR Analysis: Collected from IS5 ID7-ATR spectrometer (ThermoFisher) and analyzed in transmission mode.



GPC-ES Analysis Method: Waters Breeze 2 system with 1 ml/min THF flow across three GPC columns. Detection via refractive index, calibrated against polystyrene standards.

Polymer	M_n (from GPC)	M_w (from GPC)	PDI
P(L)LCL	61,361	109,447	1.78

- **Structure of P(L)LCL copolymers**



Approved By:
Amie Tyler
Quality Manager