

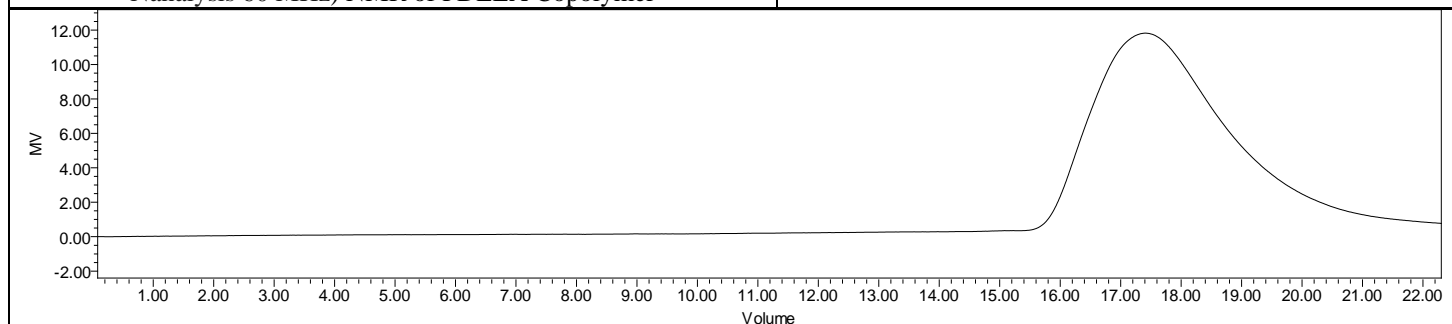
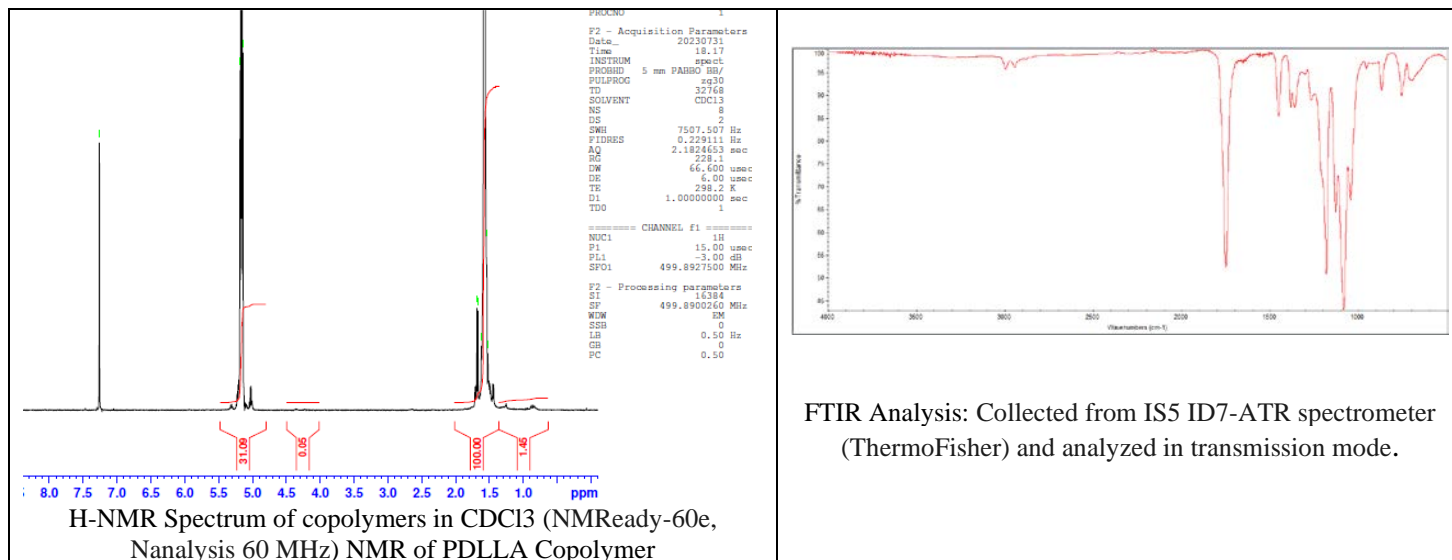
No. AP305

Certificate of Analysis



Product Name: Poly(D,L-lactide) acid endcap (M_n 80,000-120,000 Da)

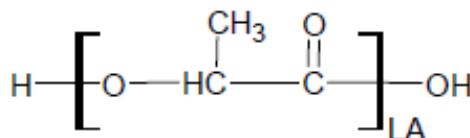
L:D 98:2 (Lot# 230727RAI-C)



GPC-ES Analysis Method: Waters Breeze 2 system with 1 ml/min THF flow across three GPC columns. Detection via refractive index, calibrated against polystyrene standards.

Polymer	M_n (from GPC)	M_w (from GPC)	PDI
PDLLA	88,035	146,129	1.66

• Structure of PDLLA copolymers



Approved By:
Amie Tyler
Quality Manager