

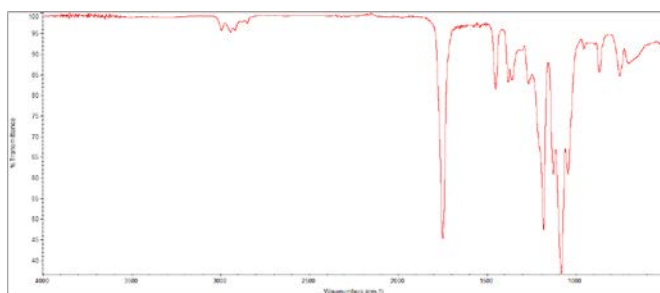
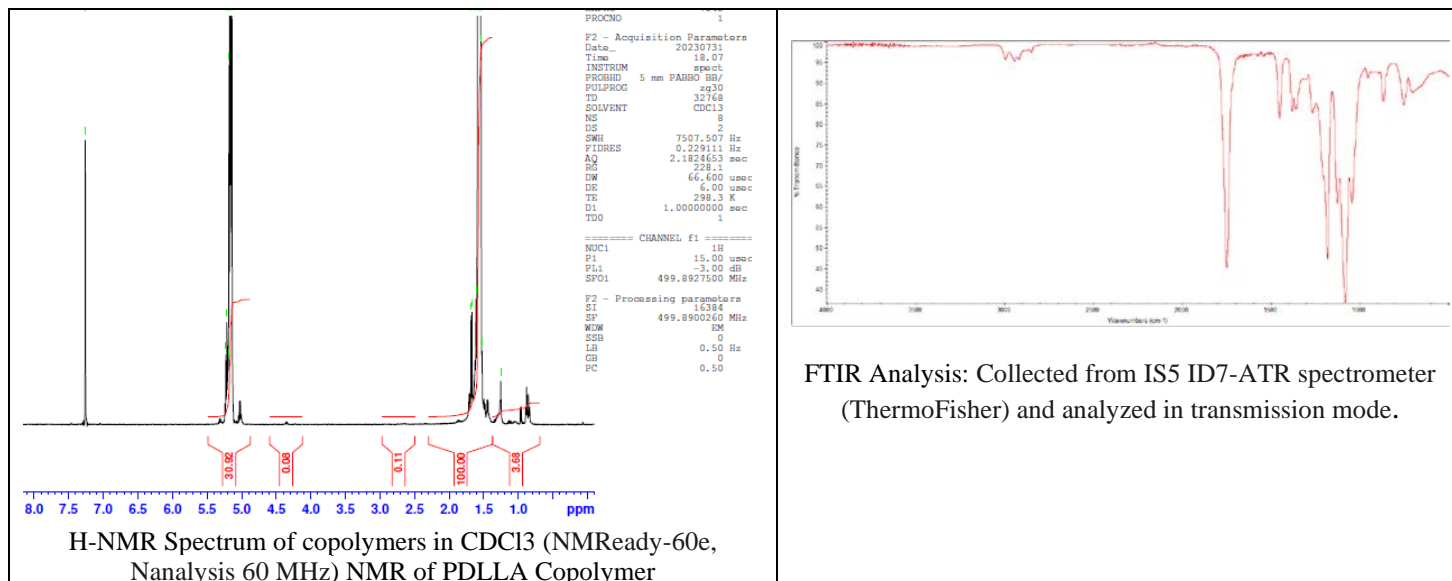
No. AP303

Certificate of Analysis

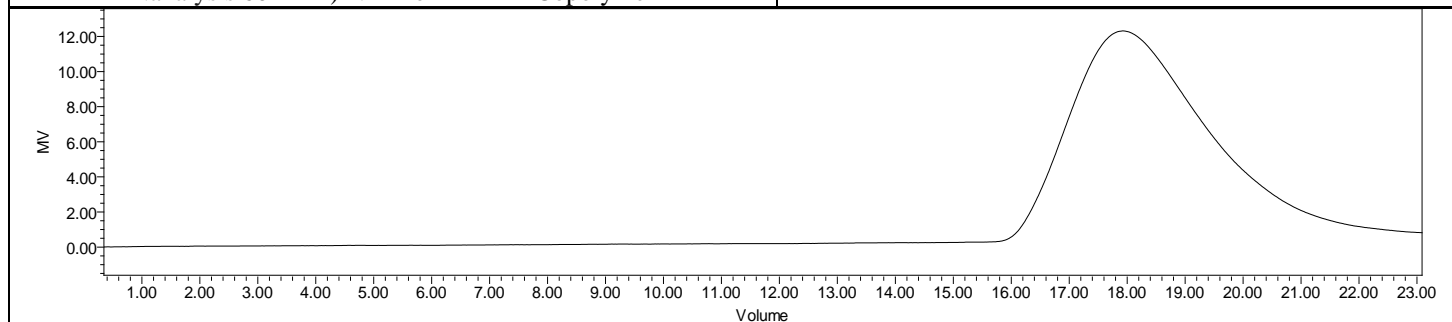


Product Name: Poly(D,L-lactide) acid endcap (M_n 80,000-120,000 Da)

L:D 92:8 (Lot# 230726RAI-B)



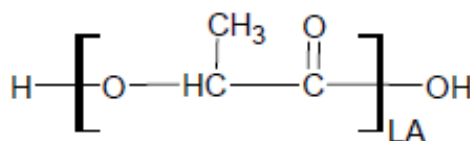
FTIR Analysis: Collected from IS5 ID7-ATR spectrometer (ThermoFisher) and analyzed in transmission mode.



GPC-ES Analysis Method: Waters Breeze 2 system with 1 ml/min THF flow across three GPC columns. Detection via refractive index, calibrated against polystyrene standards.

Polymer	M_n (from GPC)	M_w (from GPC)	PDI
PDLLA	80,849	109,945	1.36

Structure of PDLLA copolymers



Approved By:
Amie Tyler
Quality Manager