

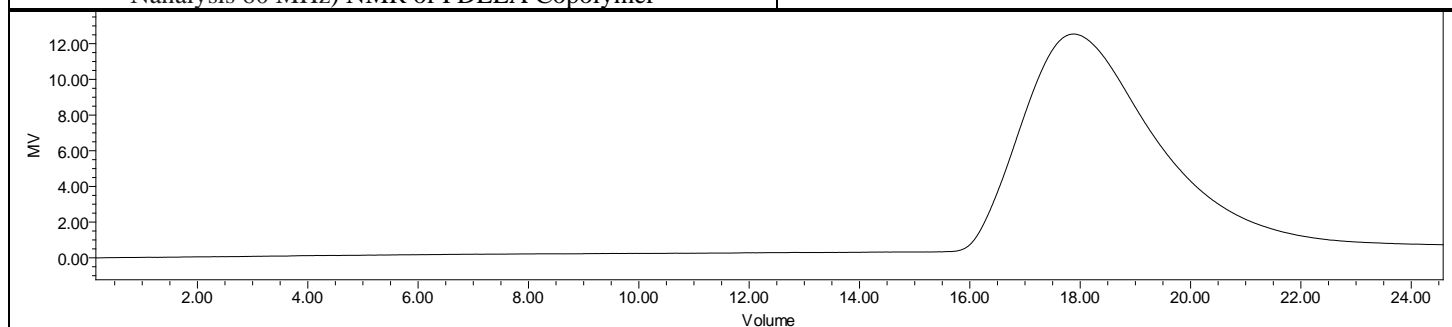
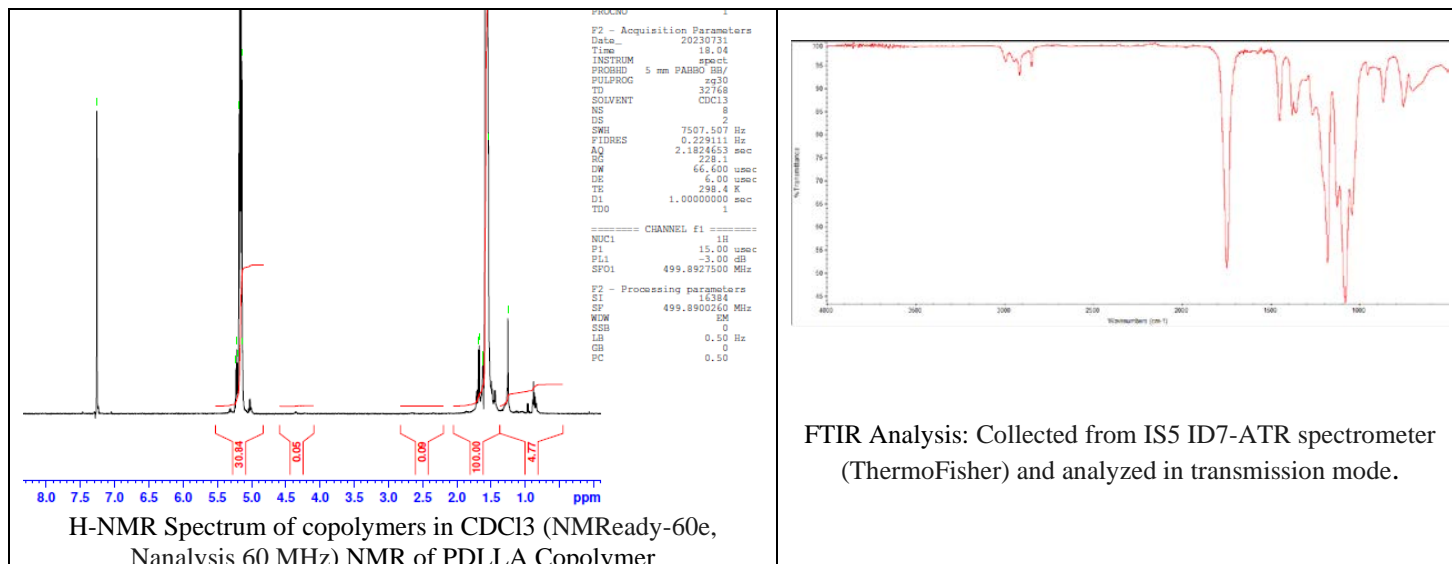
# No. AP302

# Certificate of Analysis



Product Name: Poly(D,L-lactide) acid endcap ( $M_n$  80,000-120,000 Da)

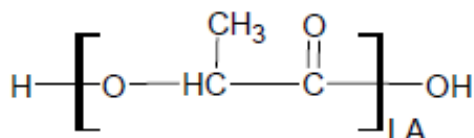
L:D 94:6 (Lot# 230726RAI-A)



GPC-ES Analysis Method: Waters Breeze 2 system with 1 ml/min THF flow across three GPC columns. Detection via refractive index, calibrated against polystyrene standards.

Polymer	$M_n$ (from GPC)	$M_w$ (from GPC)	PDI
PDLA	80,741	113,125	1.40

## Structure of PDLA copolymers



Approved By:  
*Amie Tyler*  
Quality Manager