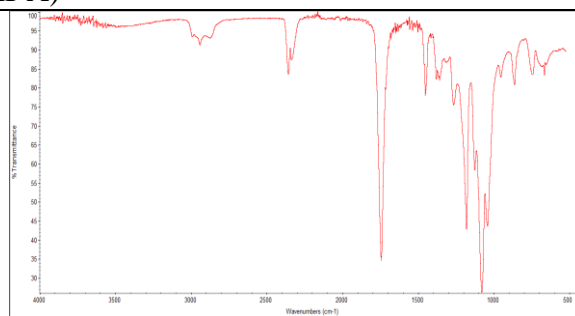
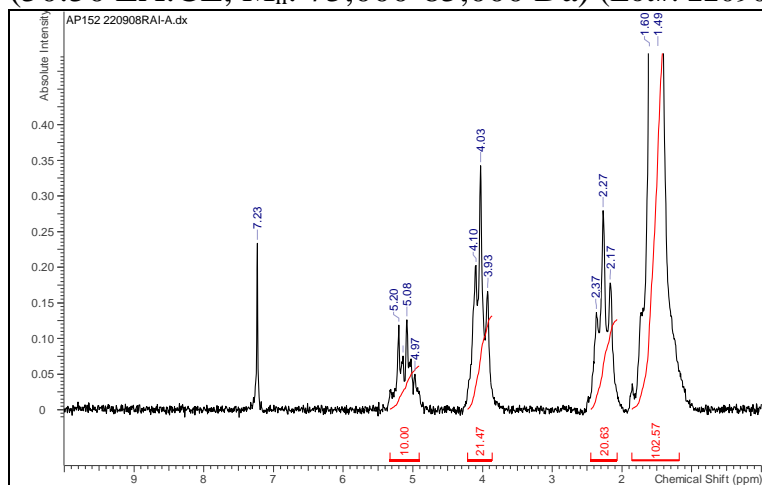


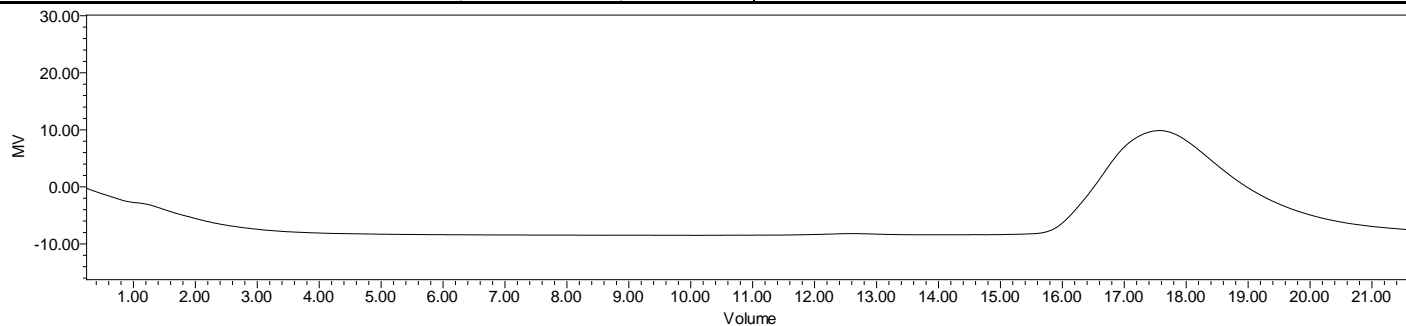
No. AP290 Certificate of Analysis

Product Name: Poly(L-lactide-co-caprolactone) copolymer ester endcap
(50:50 LA:CL, M_n : 75,000-85,000 Da) (Lot#: 220908RAI-A)



FTIR Analysis: Collected from Nicolet Avatar 380 spectrometer with ATR Smart Orbit and analyzed in transmission mode.

H-NMR Spectrum of copolymers in $CDCl_3$ (NMReady-60e, Nanalysis 60 MHz) NMR of P(L)LCL copolymers:
LA/CL = 48%/52% molar ratio (37%/63% w/w)



GPC-ES Analysis Method: Waters Breeze 2 system with 1 ml/min THF flow across three GPC columns. Detection via refractive index, calibrated against polystyrene standards.

Polymer	M_n (from GPC)	M_w (from GPC)	PDI
P(L)LCL	81,091	130,150	1.61

- Structure of P(L)LCL copolymers

