

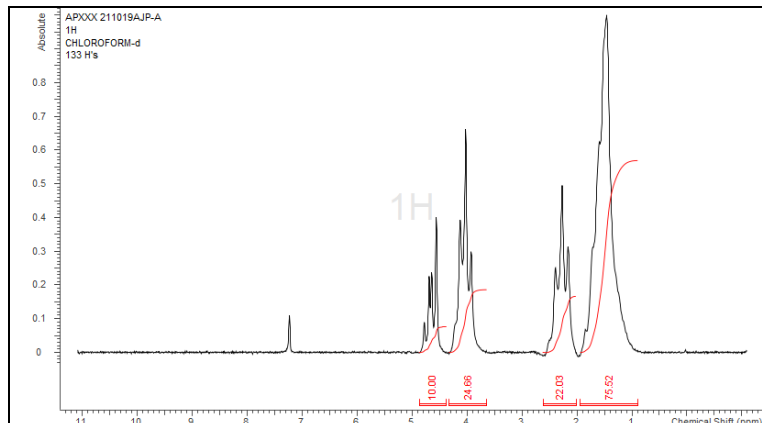
No. AP282

Certificate of Analysis

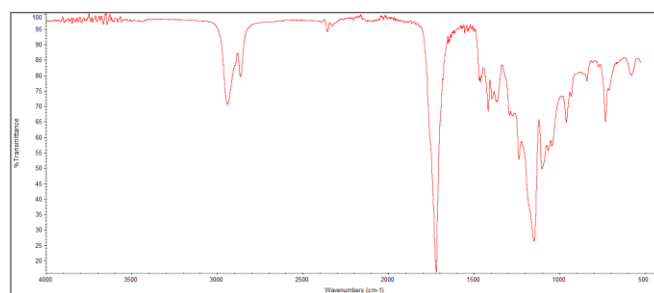


Product Name: Poly(Caprolactone-co-Glycolide) 70:30 CL:GA

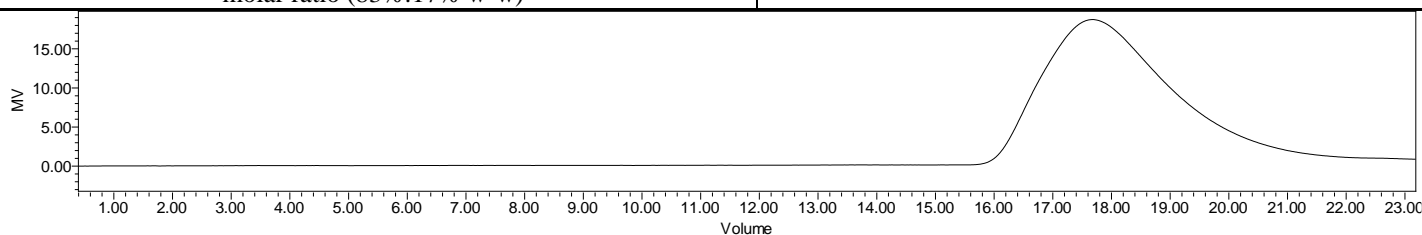
(Mn: 65,000 – 75,000 Da) (Lot # 211019AJP-A)



H-NMR Spectrum of copolymers in CDCl₃ (NMReady-60e, Nanalysis 60 MHz) NMR of PCLGA Copolymer: CL:GA 71%:29% molar ratio (83%:17% w-w)



FTIR Analysis: Collected from Nicolet Avator 380 spectrometer with ATR Smart Orbit and analyzed in transmission mode.



GPC-ES Analysis Method: Waters Breeze 2 system with 1 ml/min THF flow across three GPC columns. Detection via refractive index, calibrated against polystyrene standards.

Polymer	M _n (from GPC)	M _w (from GPC)	PDI
PCLGA	69,298	120,538	1.74

- Structure of PCLGA copolymers**

