

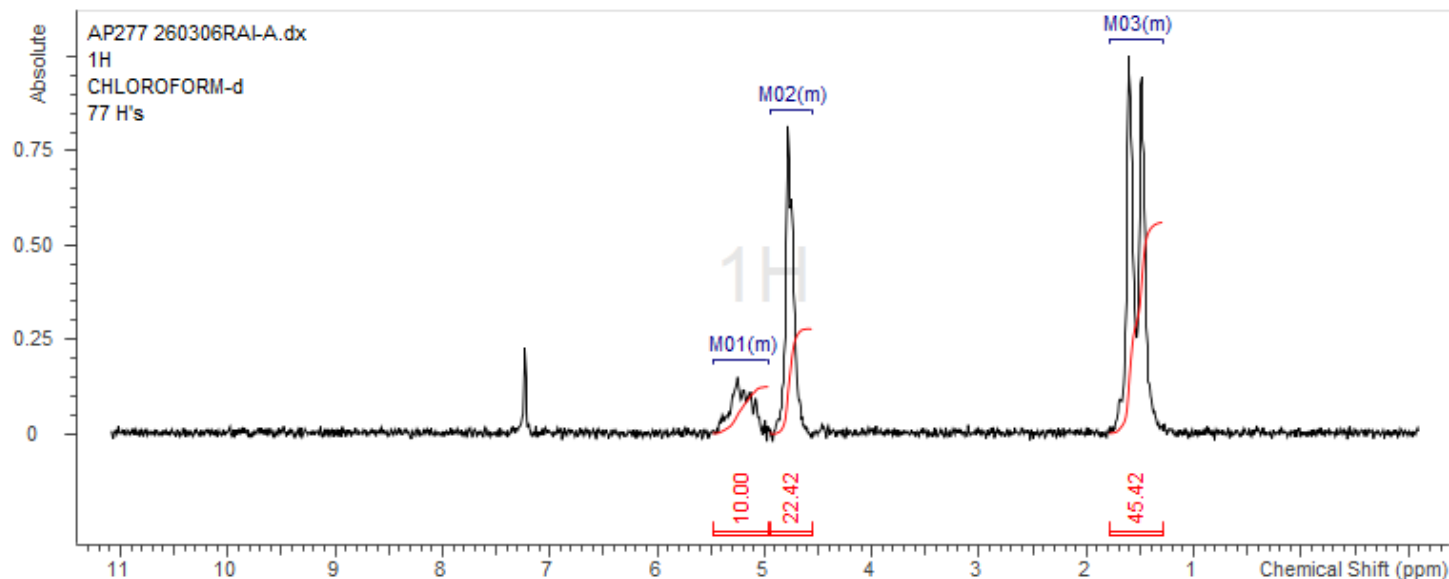
No. AP277

# Certificate of Analysis



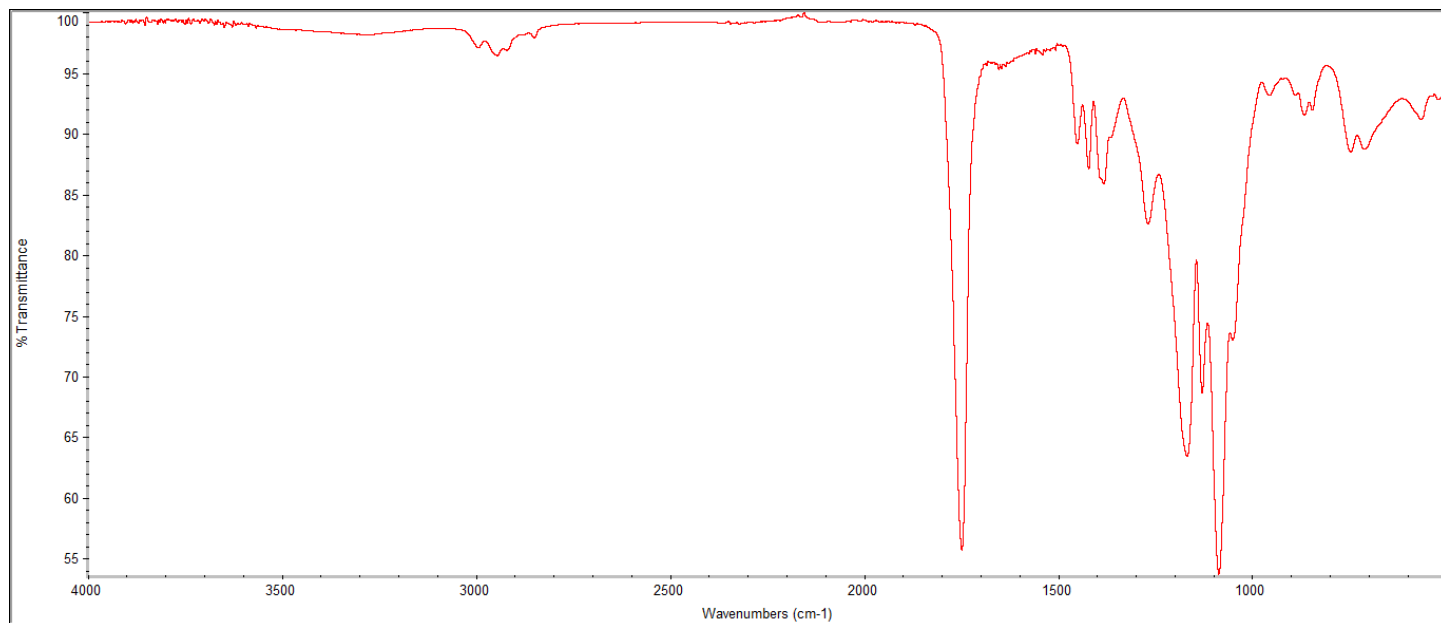
Product Name: Poly(lactide-co-glycolide) (LA:GA 50:50, 85,000-100,000Da)  
ester endcap (Lot#: 260306RAI-A)

## H-NMR



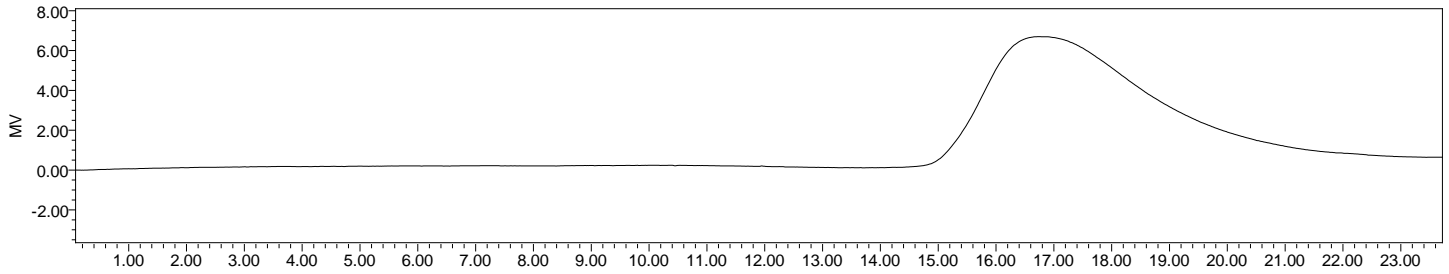
H-NMR Spectrum of copolymers in CDCl<sub>3</sub> (NMReady-60e, Nanalysis 60 MHz) NMR of PLGA copolymer: LA-GA =47%-53% molar ratio (LA:GA 53%:47% w:w)

## FTIR



FTIR Analysis: Collected from IS5 ID7-ATR spectrometer (Thermo Scientific) and analyzed in transmission mode.

## GPC-ES



Polymer	M <sub>n</sub> (from GPC)	M <sub>w</sub> (from GPC)	PDI
PLGA	86,126	105,977	1.23

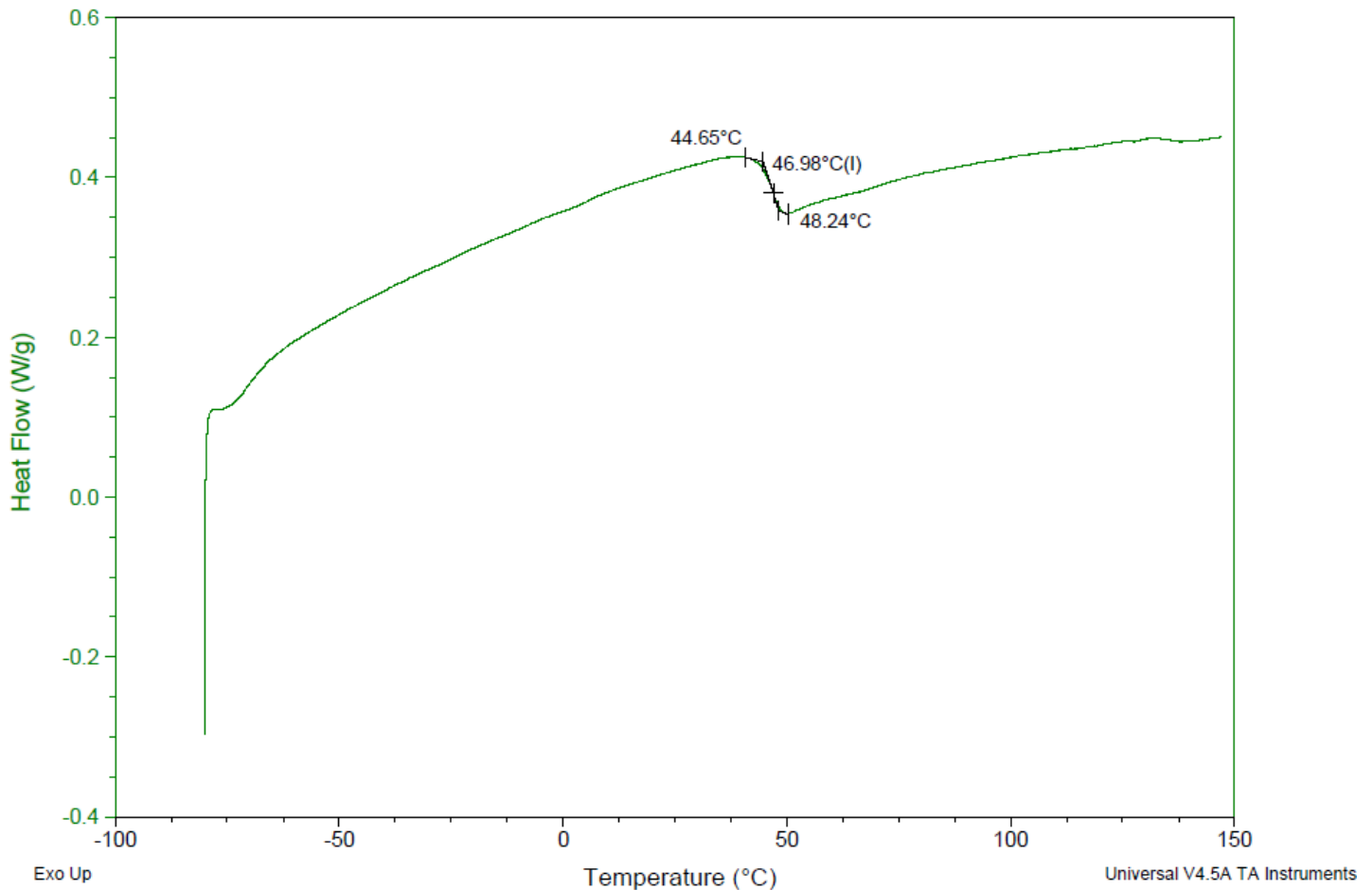
**GPC-ES Analysis Method:** Waters Breeze 2 system with 1 ml/min THF flow across three GPC columns. Detection via refractive index, calibrated against polystyrene standards.

## DSC

Sample: AP277 260326RAI-A  
 Size: 2.1000 mg  
 Method: Ramp

### DSC

File: C:\...\COA\AP277 260326RAI-A.001  
 Run Date: 12-Mar-2026 09:39  
 Instrument: DSC Q2000 V24.11 Build 124

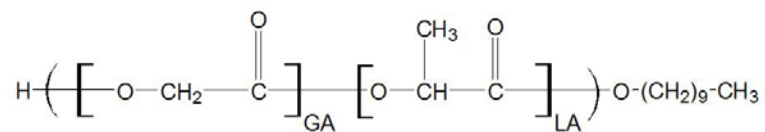


**DSC Testing:** 1-5 mg sample tested in crimped aluminum pan on a TA Instruments Model Q2000 with procedure equilibration 100 °C, isothermal 5 minutes, equilibrate -80 °C, data on, ramp 10 °C/min to 150 °C. T<sub>g</sub> = 46.98 °C

## IV

**Inherent Viscosity:**  $0.332 \pm 0.014$  dL/g (calculated from kinematic viscosity at 2% w/v Acetone on Rheosense microVISC, n=3) at 25°C.

### Structure of copolymers



Approved By:  
*Amie Tyler*  
Quality Manager