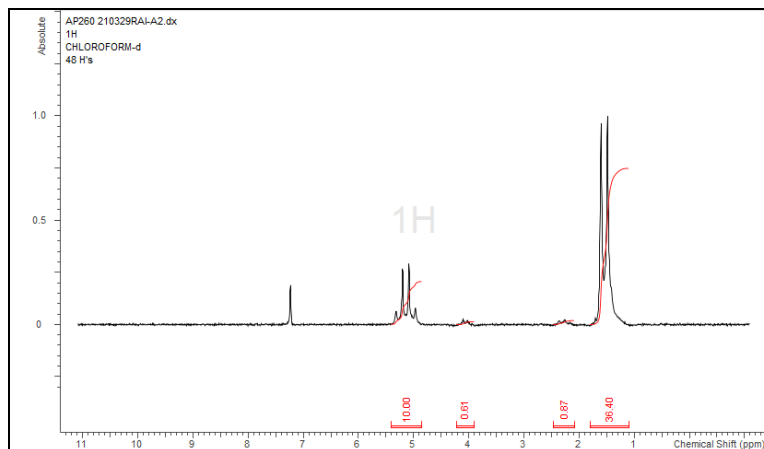


# No. AP276

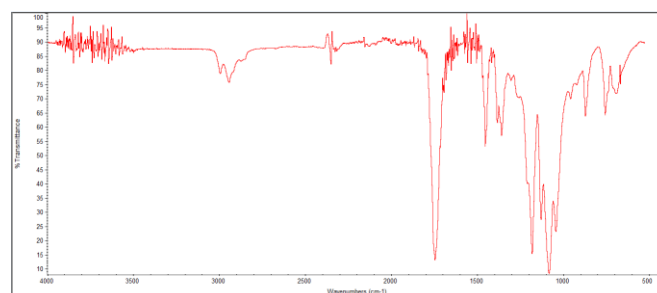
# Certificate of Analysis



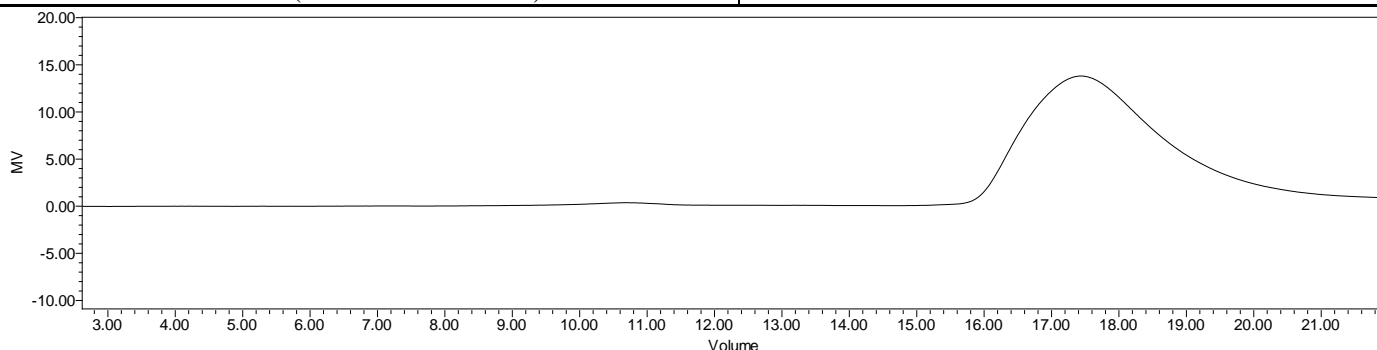
Product Name: Poly(L-Lactide-co-caprolactone) copolymer acid end-capped  
(95:5 LA:CL,  $M_n$ : 100,000-200,000 Da) (Lot#: 210329RAI-A)



H-NMR Spectrum of copolymers in CDCl<sub>3</sub> (NMReady-60e, Nanalysis 60 MHz) NMR of PLCL Copolymer: LA-CL = 97%-3% molar ratio (LA-CL 95%-5% w-w)



FTIR Analysis: Collected from Nicolet Avatar 380 spectrometer with ATR Smart Orbit and analyzed in transmission mode.



GPC-ES Analysis Method: Waters Breeze 2 system with 1 ml/min THF flow across three GPC columns. Detection via refractive index, calibrated against polystyrene standards.

Polymer	$M_n$ (from GPC)	$M_w$ (from GPC)	PDI
P(L)LCL	117,436	162,222	1.38

- Structure of P(L)LCL copolymers

