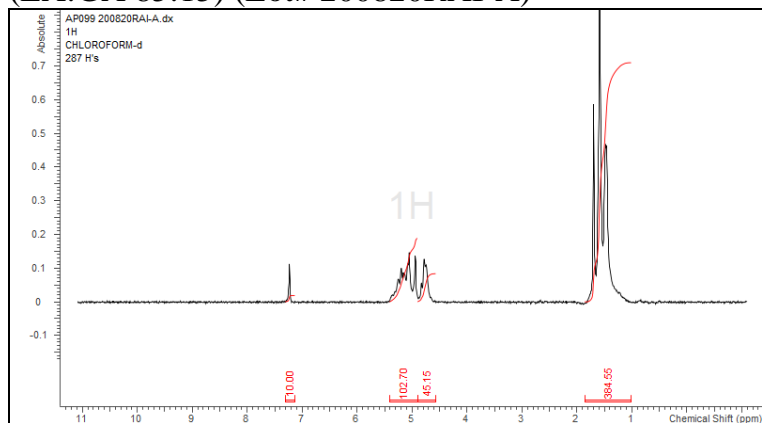


# No. AP271

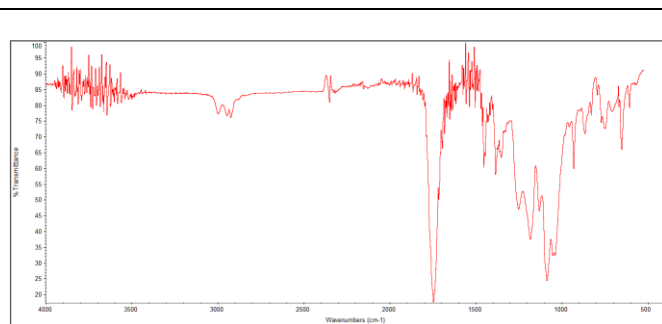
# Certificate of Analysis



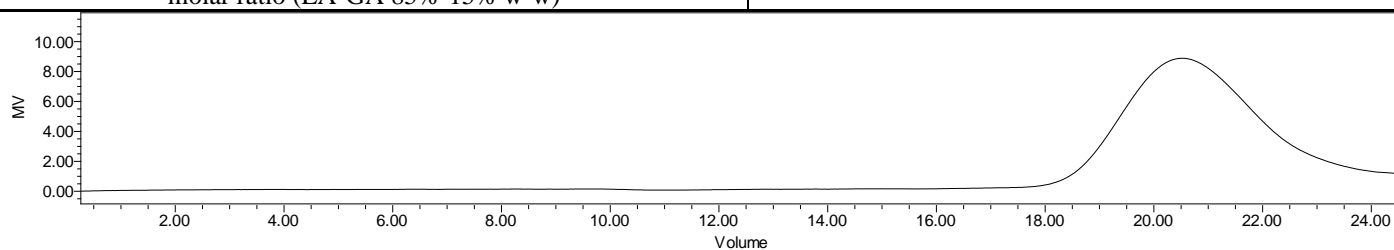
Product Name: Poly(lactide-co-glycolide)-Cholesterol endcap (Mn 10kDa-15kDa)  
(LA:GA 85:15) (Lot# 200820RAI-A)



H-NMR Spectrum of copolymers in CDCl<sub>3</sub> (NMReady-60e, Nanalysis 60 MHz) NMR of PLGA copolymer: LA-GA = 82%-18% molar ratio (LA-GA 85%-15% w-w)



FTIR Analysis: Collected from cast-film on KBr salt-plate placed in a Nicolet Avatar 380 spectrometer with ATR Smart Orbit and analyzed in transmission mode.



GPC-ES Analysis Method: Waters Breeze 2 system with 1 ml/min THF flow across three GPC columns. Detection via refractive index, calibrated against polystyrene standards.

Polymer	M <sub>n</sub> (from GPC)	M <sub>w</sub> (from GPC)	PDI
PLGA	14,712	22,341	1.52

## • Structure of PLGA copolymers

