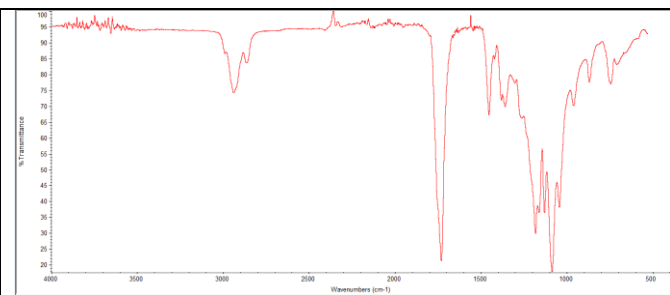
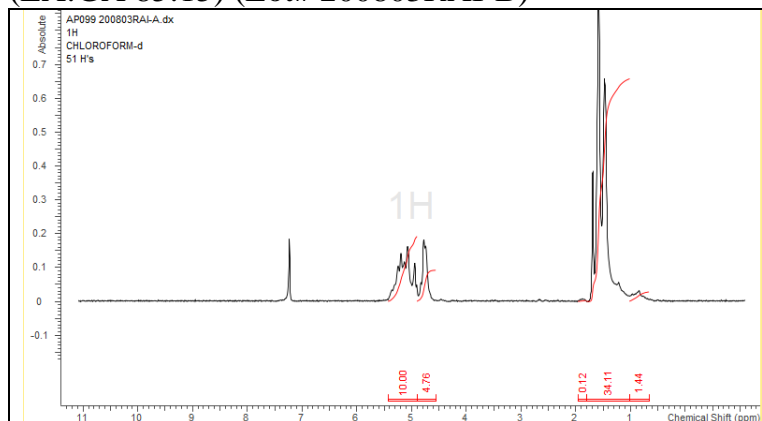


# No. AP268

# Certificate of Analysis

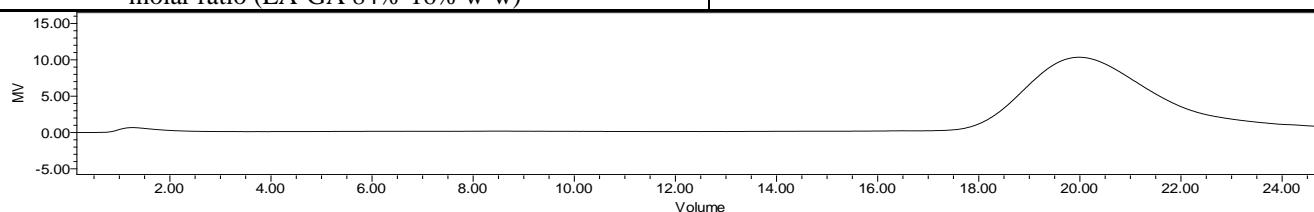


Product Name: Poly(lactide-co-glycolide)-Cholesterol endcap (Mn 25kDa-35kDa)  
(LA:GA 85:15) (Lot# 200803RAI-B)



FTIR Analysis: Collected from Nicolet Avator 380 spectrometer with ATR Smart Orbit and analyzed in transmission mode.

H-NMR Spectrum of copolymers in CDCl<sub>3</sub> (NMReady-60e, Nanalysis 60 MHz) NMR of PLGA copolymer: LA-GA = 81%-19% molar ratio (LA-GA 84%-16% w-w)



GPC-ES Analysis Method: Waters Breeze 2 system with 1 ml/min THF flow across three GPC columns. Detection via refractive index, calibrated against polystyrene standards.

Polymer	M <sub>n</sub> (from GPC)	M <sub>w</sub> (from GPC)	PDI
PLGA	25,697	32,884	1.28

## Structure of PLGA copolymers

