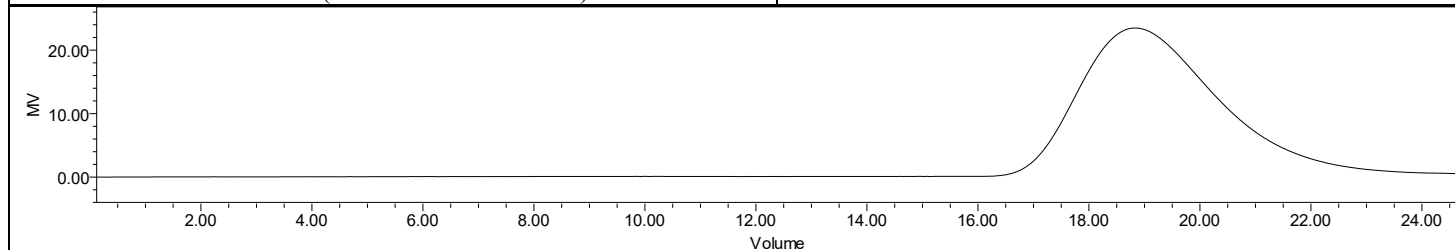
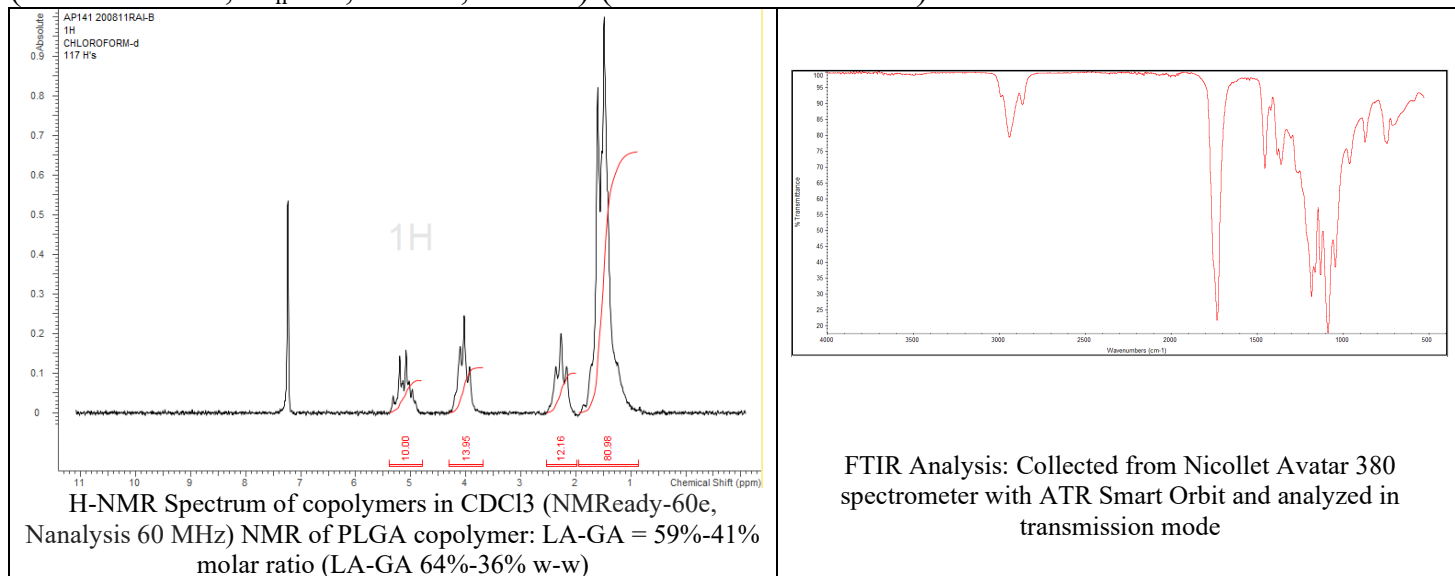


# No. AP267

# Certificate of Analysis



Product Name: Poly(L-Lactic-co-caprolactone) copolymers acid endcap  
(60:40 LA:CL,  $M_n$ : 55,000-65,000 Da) (Lot#: 200811RAI-B)



GPC-ES Analysis Method: Waters Breeze 2 system with 1 ml/min THF flow across three GPC columns. Detection via refractive index, calibrated against polystyrene standards.

Polymer	$M_n$ (from GPC)	$M_w$ (from GPC)	PDI
P(L)LCL	61,516	72,950	1.19

## • Structure of P(L)LCL copolymers

