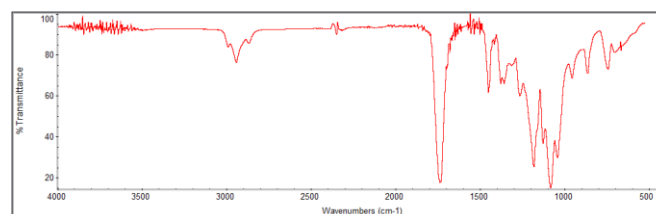
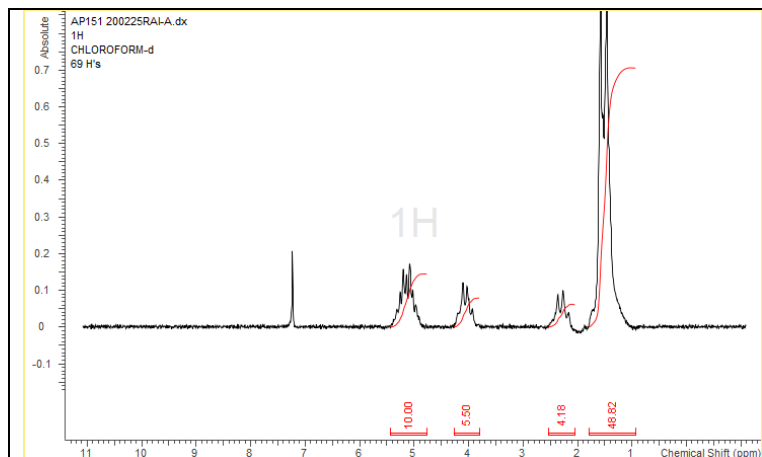


# No. AP263

# Certificate of Analysis

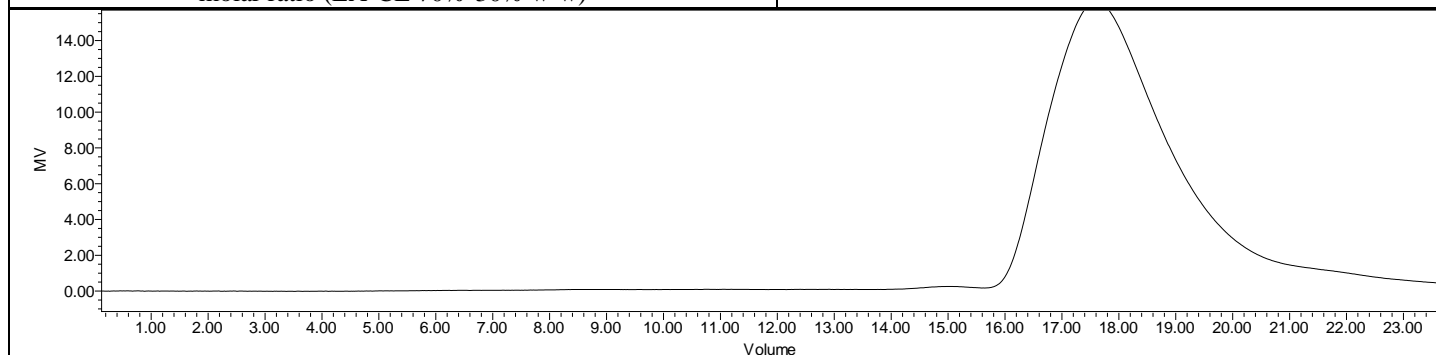


Product Name: Poly((D,L)Lactic-co-caprolactone) Copolymers acid end-capped (80:20 LA:CL,  $M_n$ : 75,000-85,000 Da) (Lot#: 200225RAI-A)



FTIR Analysis: Collected from cast-film on KBr salt-plate placed in a Nicolet Avatar 380 spectrometer with ATR Smart Orbit and analyzed in transmission mode.

H-NMR Spectrum of copolymers in CDCl<sub>3</sub> (NMReady-60e, Nanalysis 60 MHz) NMR of PLCL copolymer: LA-CL = 78%-22% molar ratio (LA-CL 70%-30% w-w)



GPC Analysis Method: Waters Breeze 2 system with 1 ml/min THF flow across three GPC columns. Detection via refractive index, calibrated against polystyrene standards.

Polymer	$M_n$ (from GPC)	$M_w$ (from GPC)	PDI
P(D,L)LaCL	81,270	120,312	1.48

- Structure of P(D,L)LaCL copolymers**

