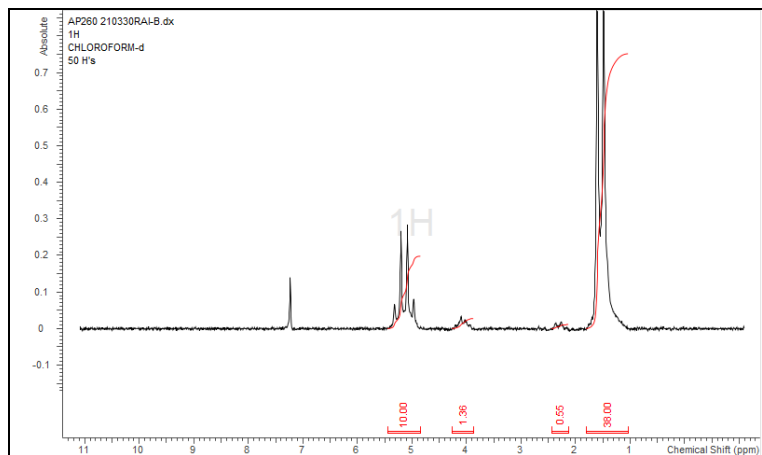


No. AP260

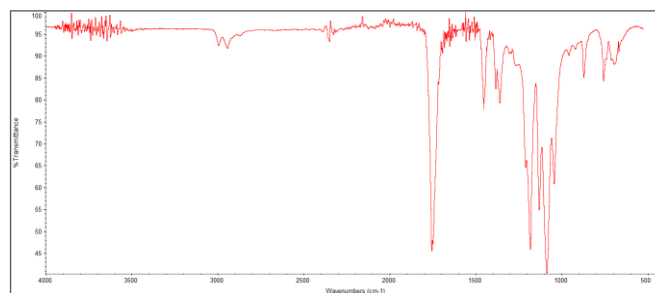
Certificate of Analysis



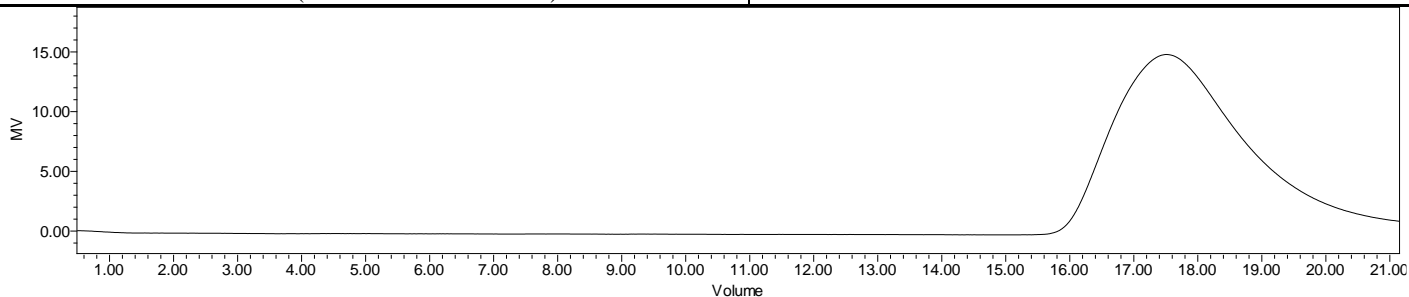
Product Name: Poly(L-Lactic-co-caprolactone) copolymer acid end-capped
(90:10 LA:CL, M_n : 100,000-200,000 Da) (Lot#: 210330RAI-B)



H-NMR Spectrum of copolymers in $CDCl_3$ (NMReady-60e, Nanalysis 60 MHz) NMR of PLCL Copolymer: LA-CL = 94%-6% molar ratio (LA-CL 90%-10% w-w)



FTIR Analysis: Collected from Nicolet Avatar 380 spectrometer with ATR Smart Orbit and analyzed in transmission mode.



GPC-ES Analysis Method: Waters Breeze 2 system with 1 ml/min THF flow across three GPC columns. Detection via refractive index, calibrated against polystyrene standards.

Polymer	M_n (from GPC)	M_w (from GPC)	PDI
P(L)LCL	107,431	148,650	1.38

- Structure of P(L)LCL copolymers

