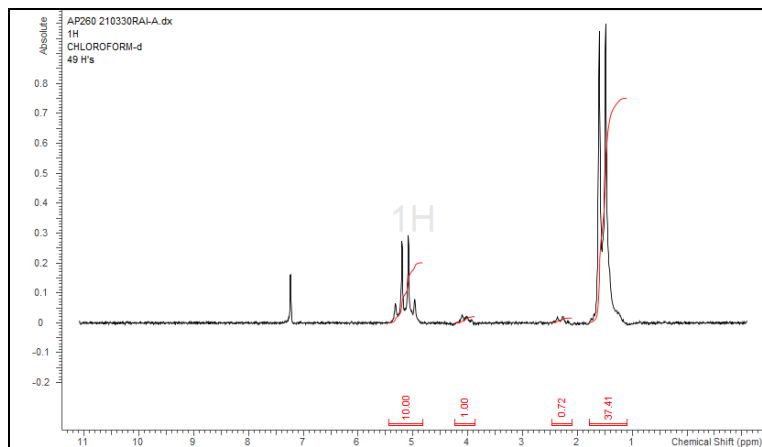


No. AP260

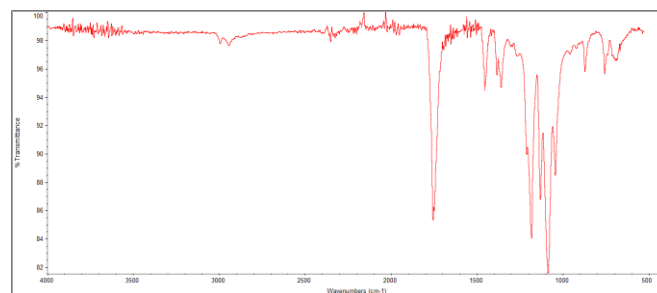
Certificate of Analysis



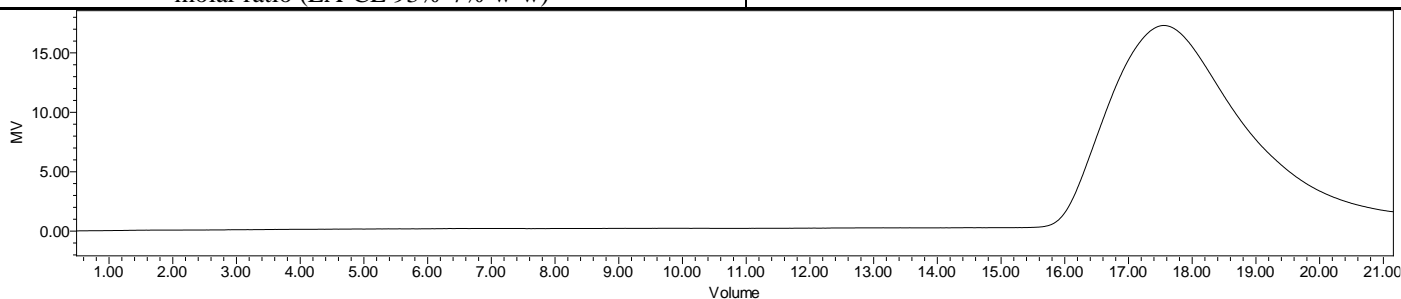
Product Name: Poly(L-Lactic-co-caprolactone) copolymer acid end-capped
(90:10 LA:CL, M_n : 100,000-200,000 Da) (Lot#: 210330RAI-A)



H-NMR Spectrum of copolymers in CDCl₃ (NMReady-60e, Nanalysis 60 MHz) NMR of PLCL Copolymer: LA-CL = 95%-5% molar ratio (LA-CL 93%-7% w-w)



FTIR Analysis: Collected from Nicolet Avatar 380 spectrometer with ATR Smart Orbit and analyzed in transmission mode.



GPC-ES Analysis Method: Waters Breeze 2 system with 1 ml/min THF flow across three GPC columns. Detection via refractive index, calibrated against polystyrene standards.

Polymer	M_n (from GPC)	M_w (from GPC)	PDI
P(L)LCL	107,172	147,218	1.37

- Structure of P(L)LCL copolymers

