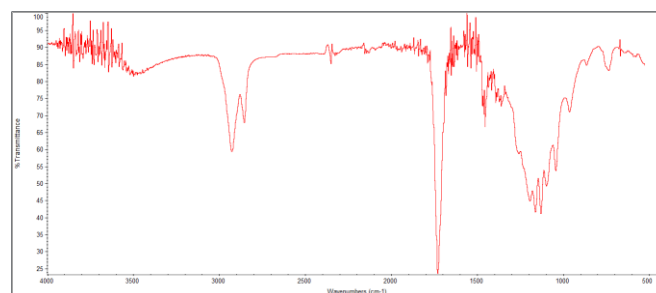
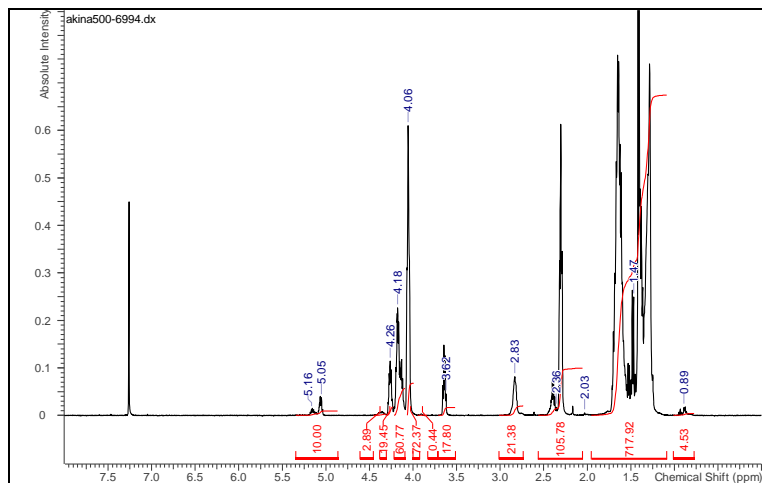


No. AP253

Certificate of Analysis

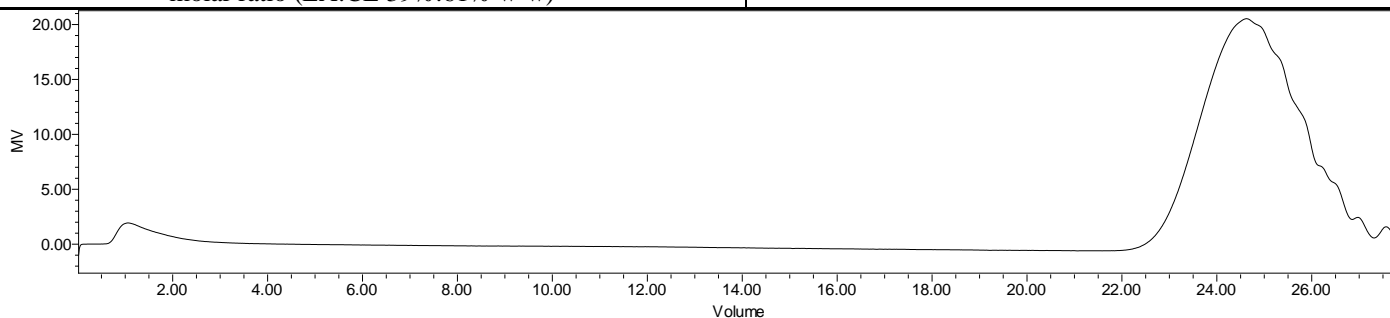


Product Name: Poly(lactide-co-caprolactone) dialcohol endcap (decadiol initiated, 50:50 LA:CL) (Mn: 1,000-5000 Da) (Lot# 220506RAI-A)



FTIR Analysis: Collected from Nicolet Avator 380 spectrometer with ATR Smart Orbit and analyzed in transmission mode.

H-NMR Spectrum of copolymers in CDCl₃ (NMReady-60e, Nanalysis 60 MHz) NMR of PLGA Copolymer: LA:CL 51%:49% molar ratio (LA:CL 39%:61% w-w)



GPC-ES Analysis Method: Waters Breeze 2 system with 1 ml/min THF flow across three GPC columns. Detection via refractive index, calibrated against polystyrene standards.

Polymer	M _n (from GPC)	M _w (from GPC)	PDI
PLCL	1,109	1,339	1.21

Structure of PLCL-diol

