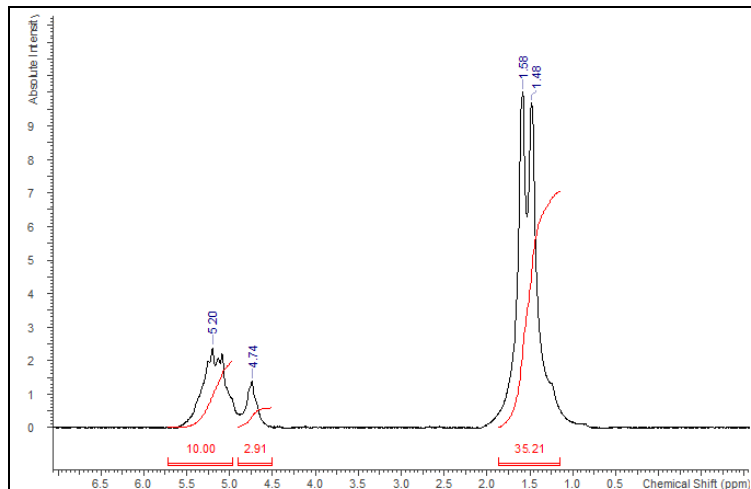


No. AP250

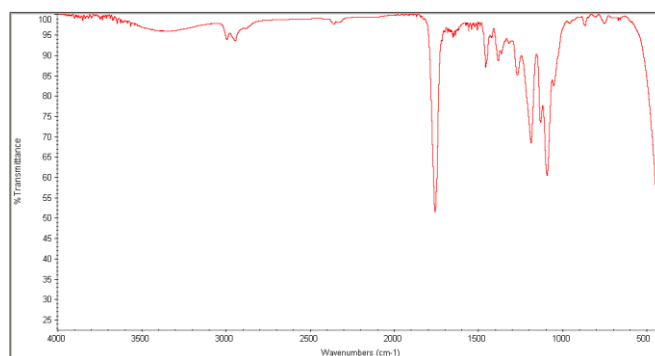
Certificate of Analysis



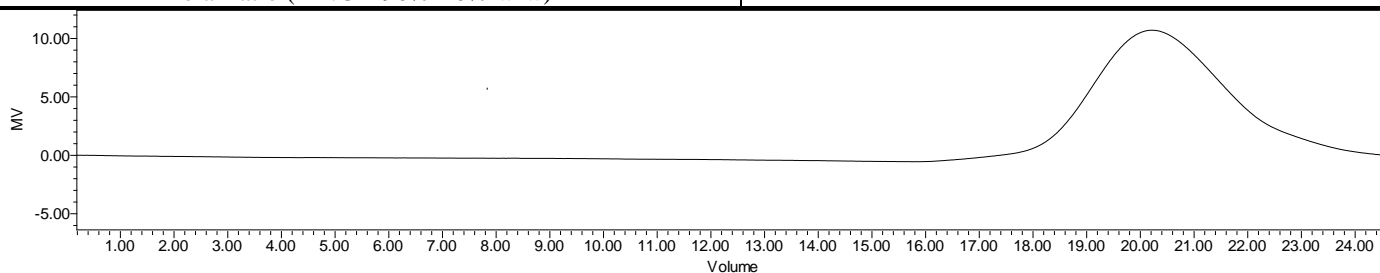
Product Name: Poly(lactide-co-glycolide) copolymers ester end capped
(85:15 LA:GA) (M_n : 5,000 -10,000 Da) (Lot#: 190308RAI-A)



H-NMR Spectrum of copolymers in CDCl₃ (NMReady-60e, Nanalysis 60 MHz) NMR of PLGA copolymer: LA-GA =87%-13% molar ratio (LA:GA 90%-10% w-w)



FTIR Analysis: Collected from cast-film on KBr salt-plate placed in Nicolet Avatar 320 spectrometer and analyzed in transmission mode.



GPC Analysis Method: Waters Breeze 2 system with 1 ml/min THF flow across three GPC columns. Detection via refractive index, calibrated against polystyrene standards.

| Polymer | M_n (from GPC) | M_w (from GPC) | PDI |
|---------|------------------|------------------|------|
| PLGA | 8163 | 12,962 | 1.59 |

• Structure of PLGA copolymers

