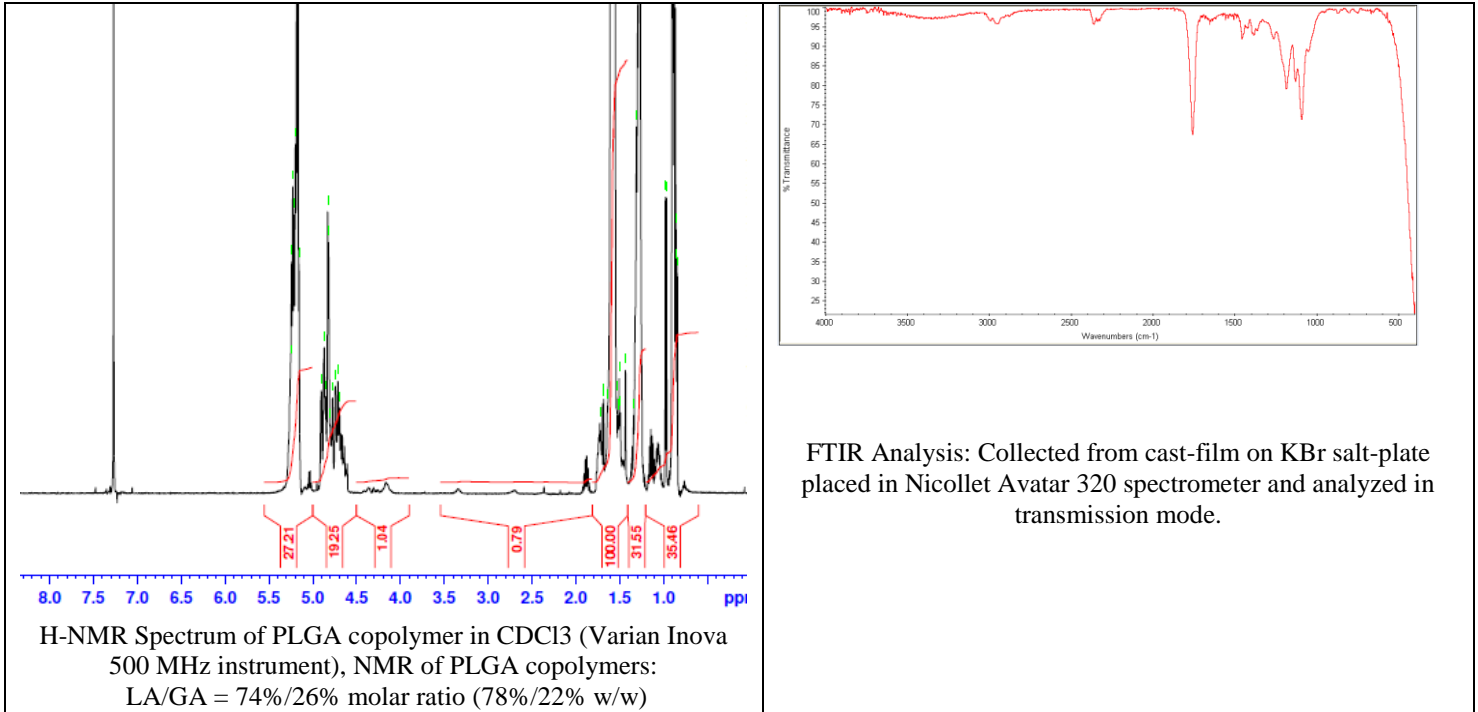


No. AP242

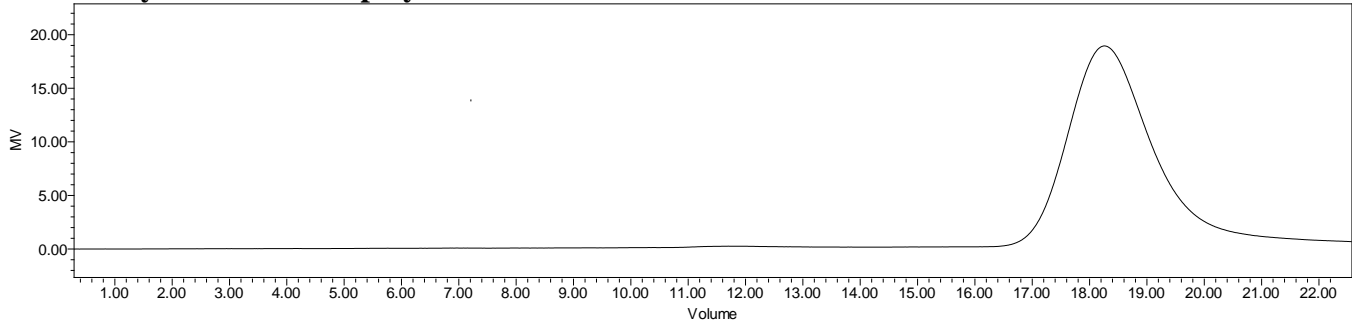
Certificate of Analysis



Product Name: Poly(lactide-co-glycolide) 6-arm (dipentaerythritol initiated)
(75:25 LA:GA, M_n : 40,000 - 60,000Da) (Lot#: 180723FAJ-A)



• GPC analysis of PLGA copolymers



Analysis Method: Waters Breeze 2 system with 1 ml/min THF flow across three GPC columns. Detection via refractive index, calibrated against polystyrene standards.

Polymer	M_n (from GPC)	M_w (from GPC)	PDI
PLGA*	57,568	74,449	1.29

*- against linear standards

• Structure of PLGA copolymers

