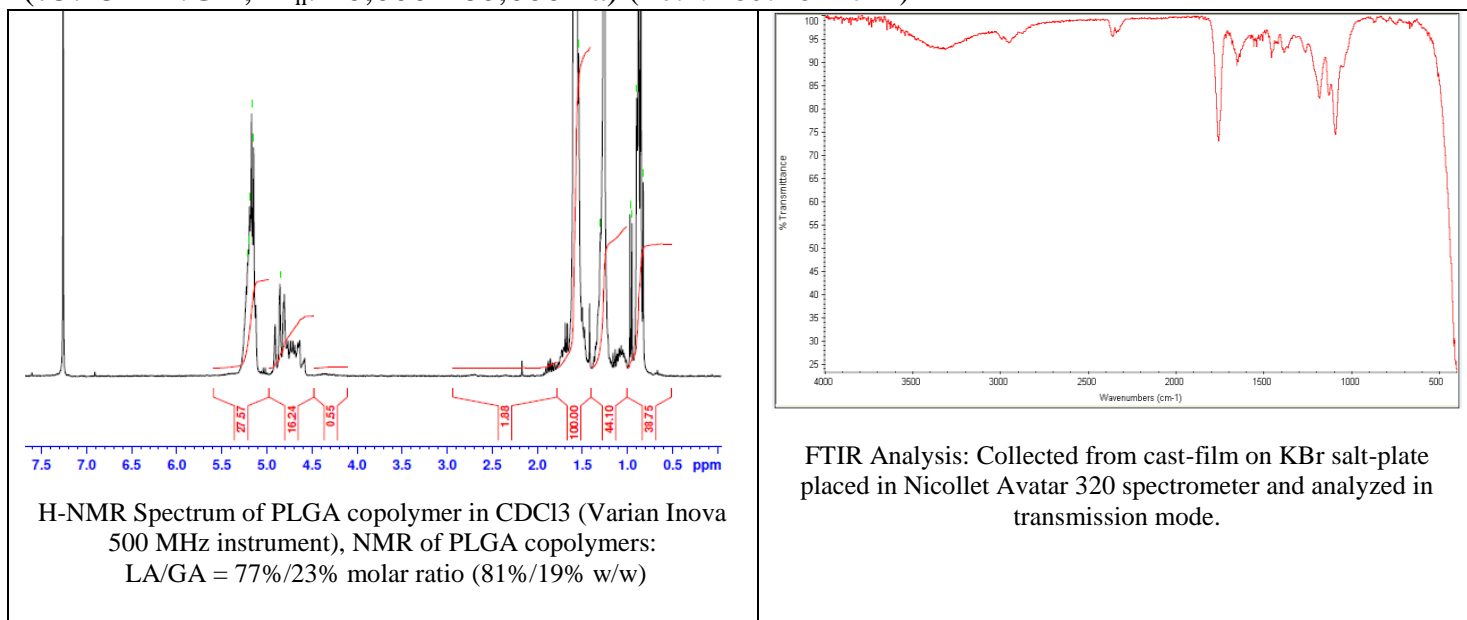


# No. AP238

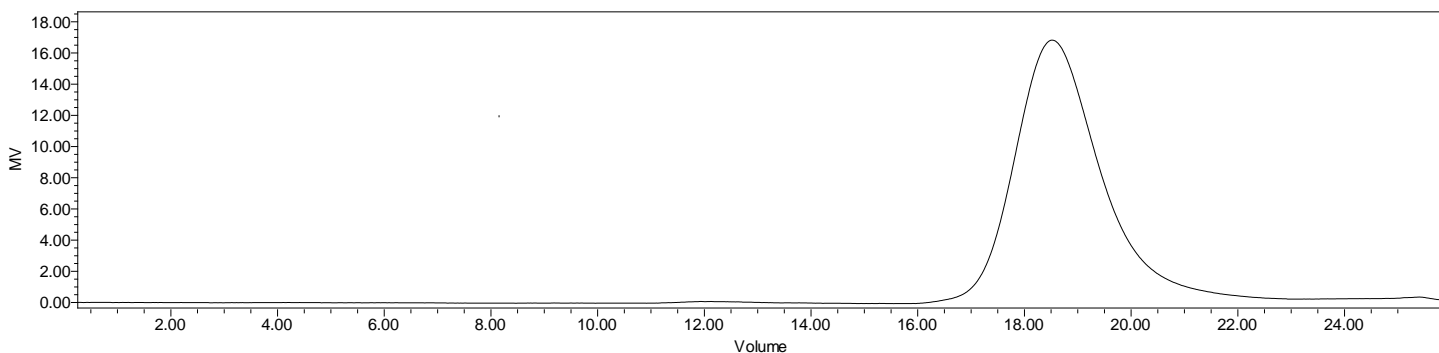
# Certificate of Analysis



Product Name: Poly(lactide-co-glycolide)-5-arm adonitol initiated  
(75:25 LA:GA,  $M_n$ : 40,000 - 60,000Da) (Lot#: 180716FAJ-A)



## • GPC analysis of PLGA copolymers



Polymer	$M_n$ (from GPC)	$M_w$ (from GPC)	PDI
PLGA	53,800	65,607	1.22

## • Structure of PLGA copolymers

