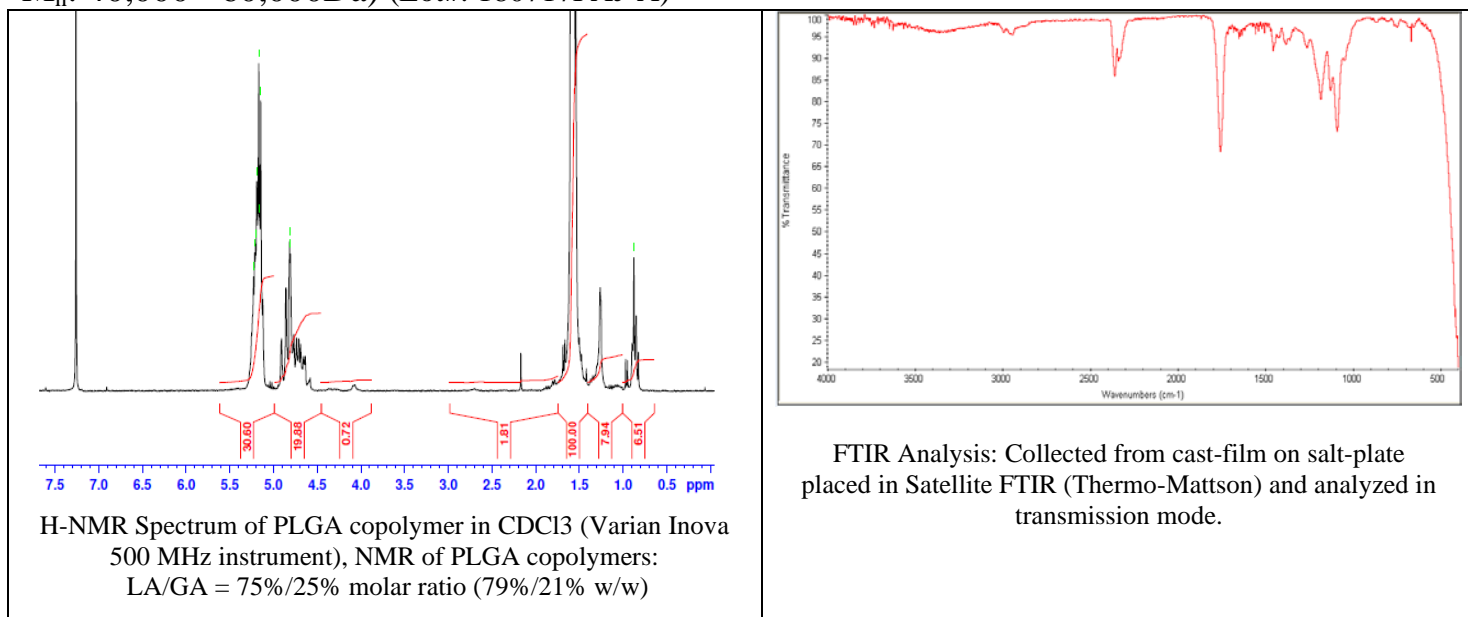
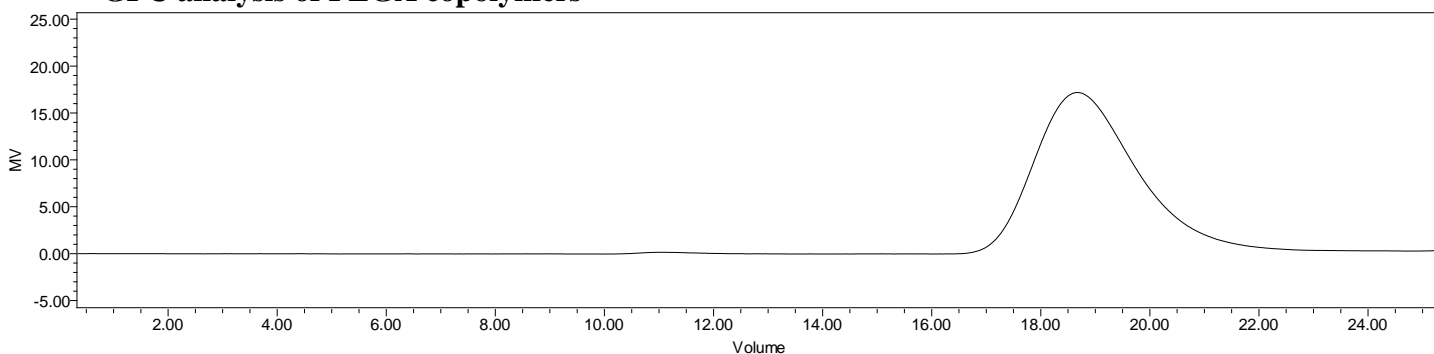


No. AP237 Certificate of Analysis

Product Name: Poly(lactide-co-glycolide)- 3-arm trimethylolpropane initiated (75:25 LA:GA,
 M_n : 40,000 - 60,000Da) (Lot#: 180717FAJ-A)



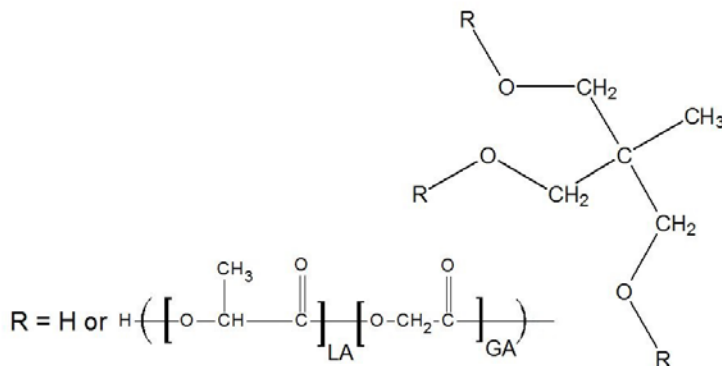
• GPC analysis of PLGA copolymers



GPC Analysis Method: Waters Breeze 2 system with 1 ml/min THF flow across three GPC columns. Detection via refractive index, calibrated against polystyrene standards.

Polymer	M_n (from GPC)	M_w (from GPC)	PDI
PLGA- 3 arm	47,586	59,930	1.26

• Structure of PLGA copolymers



Material provided for research use only. Not for human use.