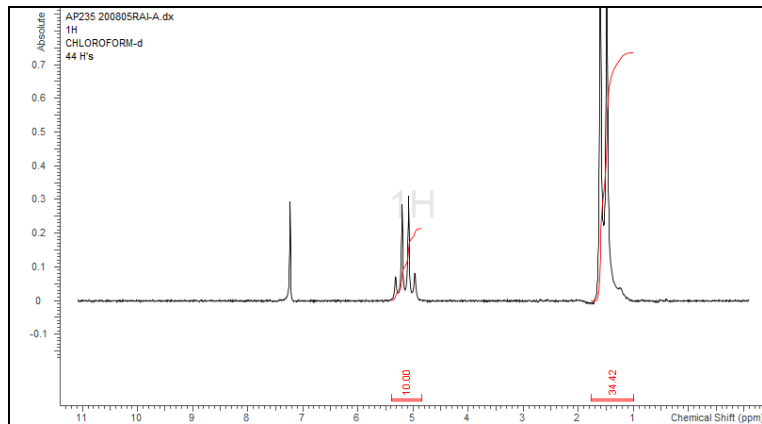


# No. AP235

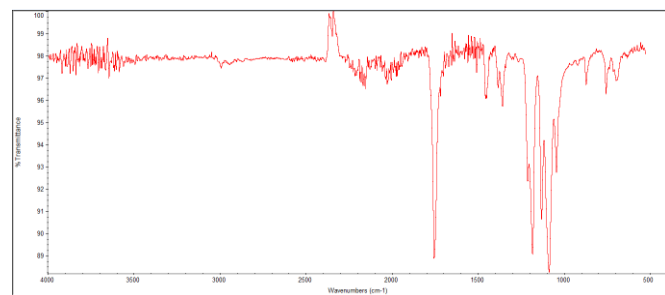
# Certificate of Analysis

Product Name: Poly(L-lactide) ester endcap (Mn: 25,000-35,000 Da)

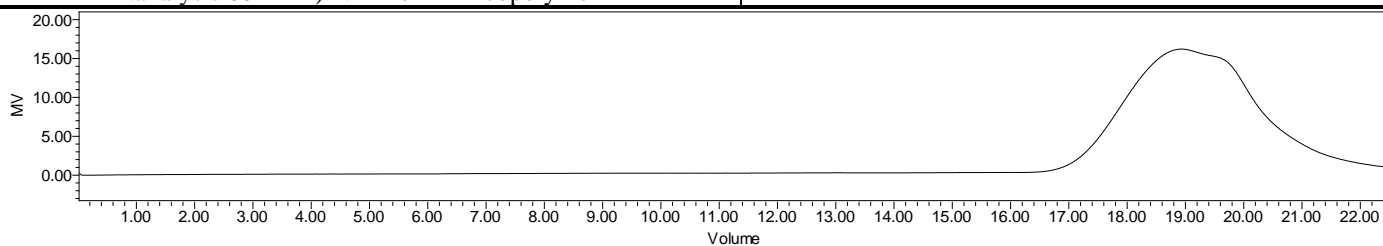
Lot # 200805RAI-A



H-NMR Spectrum of copolymers in CDCl<sub>3</sub> (NMReady-60e, Nanalysis 60 MHz) NMR of PLA copolymer



FTIR Analysis: Collected from Nicolet Avator 380 spectrometer with ATR Smart Orbit and analyzed in transmission mode.



GPC-ES Analysis Method: Waters Breeze 2 system with 1 ml/min THF flow across three GPC columns. Detection via refractive index, calibrated against polystyrene standards.

Polymer	M <sub>n</sub> (from GPC)	M <sub>w</sub> (from GPC)	PDI
PLA	34,852	55,890	1.60

- Structure of PLA ester endcap**

