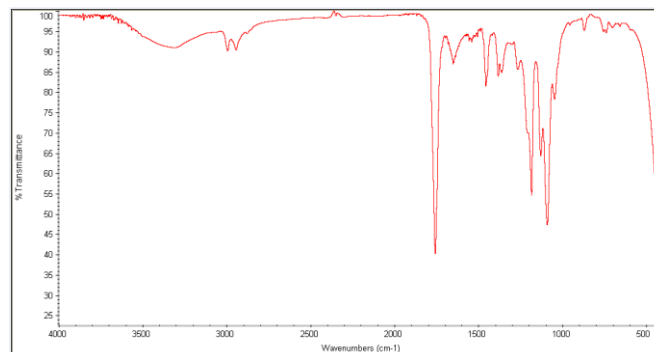
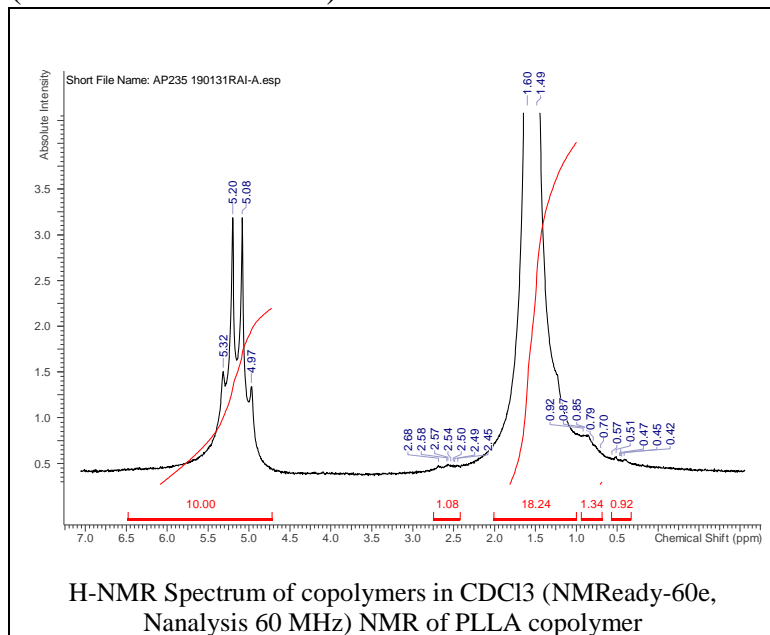


# No. AP235

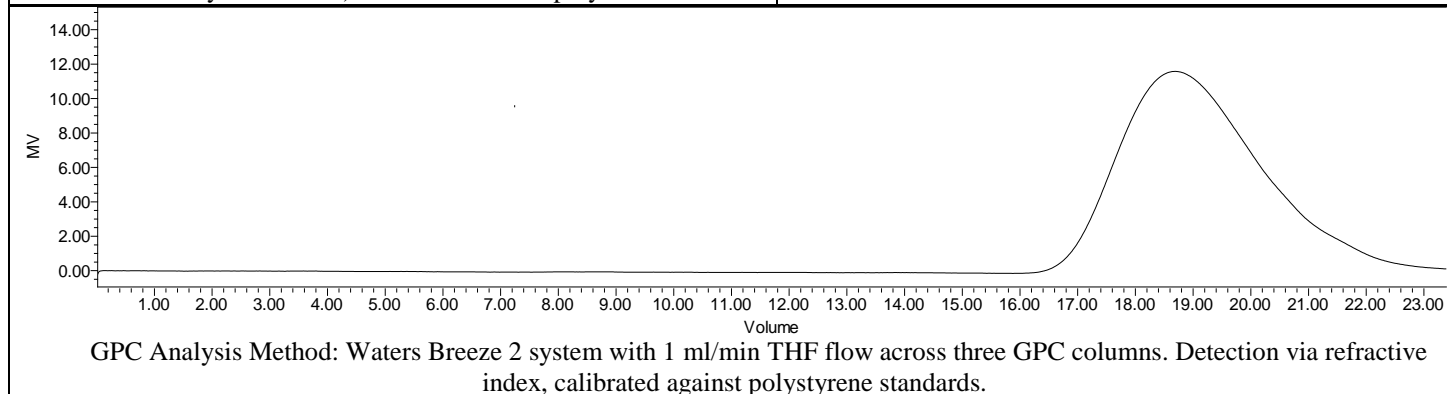
# Certificate of Analysis



Product Name: Poly(L-lactide) ester endcap (Mn: 25,000-35,000 Da)  
(Lot # 190131RAI-A)



FTIR Analysis: Collected from cast-film on KBr salt-plate placed in Nicolet Avatar 320 spectrometer and analyzed in transmission mode.



Polymer	M <sub>n</sub> (from GPC)	M <sub>w</sub> (from GPC)	PDI
PLLA	33,704	57,255	1.70

- Structure of PLA ester endcap**

